

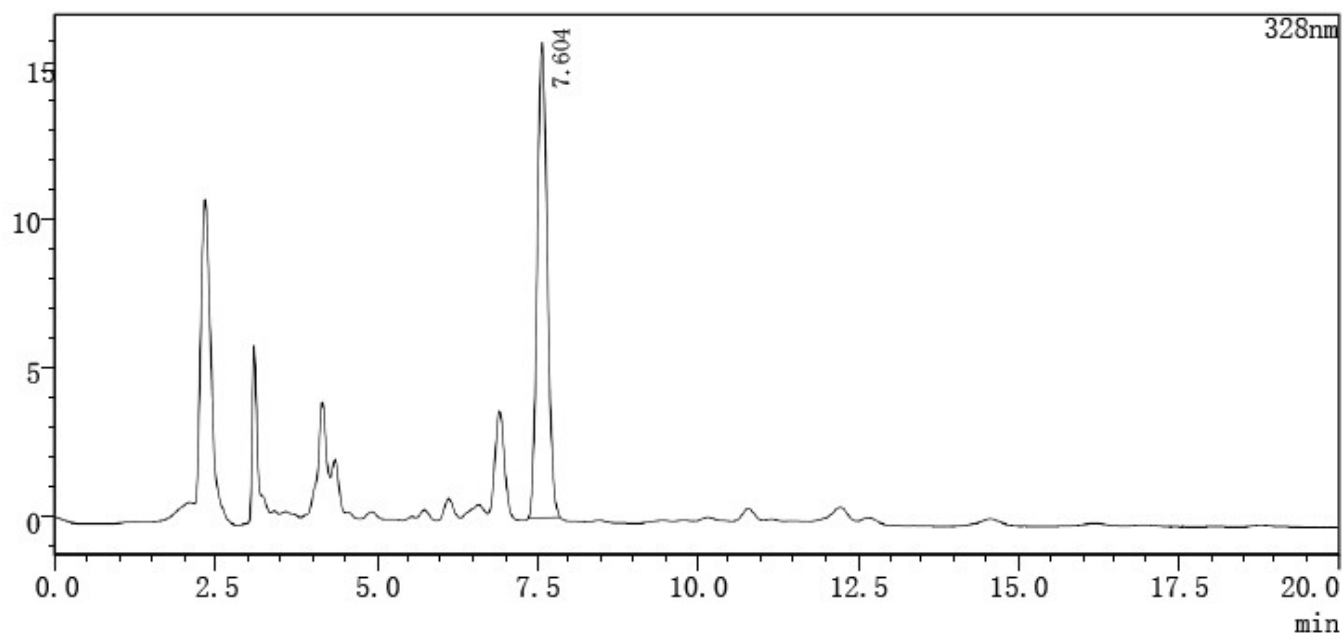
ASSAY ANALYSIS

SAMPLE NAME: LEMON BALM LIQUID EXTRACT - 100 % NATURAL (STANDARDIZED)

DATE: July 30, 2020

Determination of Rosmarinic Acid Content by HPLC

mV



Peak Number	Ret Time [min]	Area	Height	Concentration (%)	Name
1	7.604	174028	16021	0.305	Rosmarinic Acid
Total		174028	16021	0.305	

Chromatographic Conditions

Column	Promosil C18 5um 4.6*250 mm	HPLC Instrument	Shimadzu LC-16 Test
Temperature	30° C	Wavelength	328 nm
Flow Velocity	1.0 mL/min	Mobile Phase	Acetonitrile: 0.05% Phosphoric Acid Solution, 25:75

Report Summary

Conclusion: This sample of Lemon Balm Liquid Extract contains 0.305 % of Rosmarinic Acid

Disclaimer & Caution

Please refer to all relevant technical information specific to the product, prior to use. The information contained in this document is obtained from current and reliable sources. New Directions Aromatics Inc. provides the information contained herein, but makes no representation as to its comprehensiveness or accuracy. Individuals receiving this information must exercise their independent judgment in determining its appropriateness for a particular purpose. The user of the product is solely responsible for compliance with all laws and regulations applying to the use of the products, including intellectual property rights of third parties. As the ordinary or otherwise use(s) of this product is outside the control of New Directions Aromatics Inc., no representation or warranty, expressed or implied, is made as to the effect(s) of such use(s), (including damage or injury), or the results obtained. The liability of New Directions Aromatics Inc. is limited to the value of the goods and does not include any consequential loss. New Directions Aromatics Inc. shall not be liable for any errors or delays in the content, or for any actions taken in reliance thereon. New Directions Aromatics Inc. shall not be responsible for any damages resulting from use of or reliance upon this information. In the event of any dispute, the Customer hereby agrees that Jurisdiction is limited to the province of Ontario.