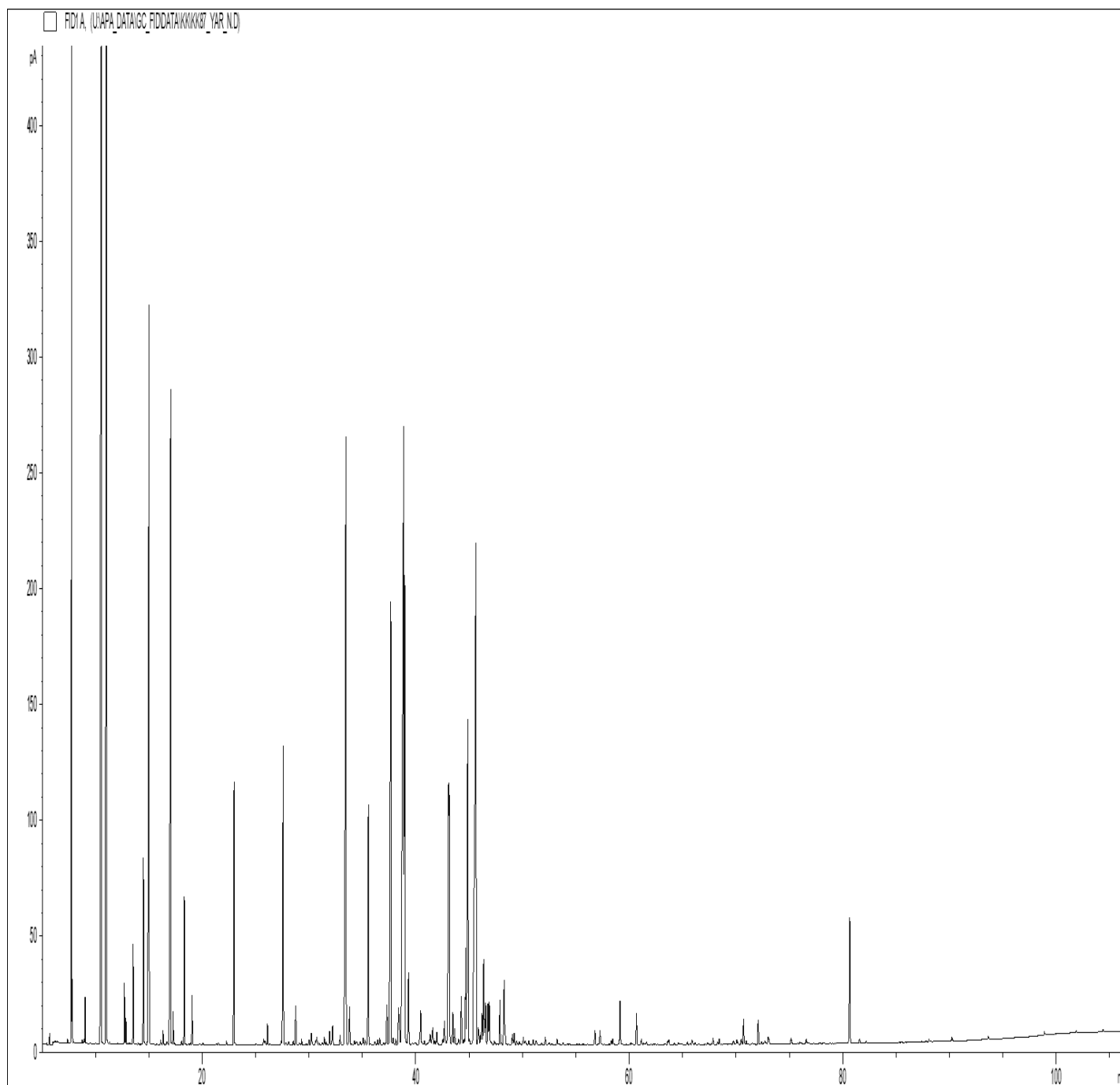


GCMS ANALYSIS

PRODUCT NAME: YARROW ESSENTIAL OIL (BLUE) -11153

DATE: August 31, 2023



Due to volume turnover, this report is not lot specific, It is representative of the quality of this oil produced by the manufacturer of this product, Specific lots may vary slightly as is the case in natural products,

GCMS ANALYSIS (cont'd.)

PRODUCT NAME: YARROW ESSENTIAL OIL (BLUE) -11153

Peak	RT (min)	Component name	%
1	5,70	ISOVALERALDEHYDE	0,04
2	7,40	TRICYCLEN	0,02
3	7,77	alpha-PINENE	5,03
4	7,83	alpha-THUYENE	0,26
5	8,75	alpha-FENCHENE	0,02
6	8,91	TERPENIC COMPOUND	0,02
7	9,01	CAMPHENE	0,22
8	10,53	beta-PINENE	10,09
9	11,03	SABINENE	9,91
10	11,11	PINADIENE	0,02
11	11,31	THUYA-2,4-DIENE	0,01
12	12,70	beta-MYRCENE	0,32
13	12,83	alpha-PHELLANDRENE	0,13
14	13,20	psi-LIMONENE	0,01
15	13,52	alpha-TERPINENE	0,55
16	14,48	LIMONENE	1,16
17	15,01	1,8-CINEOLE	6,57
18		beta-PHELLANDRENE	
19	16,10	FURAN, 2-PENTYL-	0,03
20	16,32	cis-beta-OCIMENE	0,09
21	16,66	AROMATIC COMPOUND	0,03
22	17,03	gamma-TERPINENE	5,51
23	17,27	trans-beta-OCIMENE	0,18
24	18,07	3,8-p-MENTHADIENE	0,02
25	18,31	p-CYMENE	0,92
26	19,04	TERPINOLENE	0,30
27	19,73	ISOAMYL ISOVALERATE	0,01
28	20,07	TRIDECANE	0,02
29	21,30	PINOL	0,01
30	21,49	cis-3-HEXENYL ACETATE	0,02

Disclaimer & Caution

Please refer to all relevant technical information specific to the product, prior to use, The information contained in this document is obtained from current and reliable sources, New Directions Aromatics Inc, provides the information contained herein, but makes no representation as to its comprehensiveness or accuracy, Individuals receiving this information must exercise their independent judgment in determining its appropriateness for a particular purpose, The user of the product is solely responsible for compliance with all laws and regulations applying to the use of the products, including intellectual property rights of third parties, As the ordinary or otherwise use(s) of this product is outside the control of New Directions Aromatics Inc., no representation or warranty, expressed or implied, is made as to the effect(s) of such use(s), (including damage or injury), or the results obtained, The liability of New Directions Aromatics Inc, is limited to the value of the goods and does not include any consequential loss, New Directions Aromatics Inc, shall not be liable for any errors or delays in the content, or for any actions taken in reliance thereon, New Directions Aromatics Inc, shall not be responsible for any damages resulting from use of or reliance upon this information, In the event of any dispute, the Customer hereby agrees that Jurisdiction is limited to the province of Ontario, Canada.

GCMS ANALYSIS (cont'd.)

PRODUCT NAME: YARROW ESSENTIAL OIL (BLUE) -11153

Peak	RT (min)	Component name	%
31	22,27	5-HEPTEN-2-ONE, 6-METHYL-	0,03
32	22,98	ARTEMISIA KETONE	1,87
33	25,02	3-HEXEN-1-OL	0,01
34	25,74	3-OCTANOL	0,05
35	25,89	NONANAL	0,05
36	26,11	YOMOGI ALCOOL	0,13
37	26,35	FENCHONE	0,01
38	27,38	ALIPHATIC ALCOHOL	0,03
39	27,58	alpha-THUYONE	2,47
40	27,87	TERPENIC COMPOUND	0,03
41	28,09	alpha,p-DIMETHYLSTYRENE	0,03
42	28,52	LINALOOL cis-OXIDE	0,03
43	28,75	beta-THUYONE	0,29
44	29,11	AROMATIC COMPOUND	0,02
45	29,30	1-OCTEN-3-OL	0,04
46	29,99	MENTHONE	0,04
47	30,22	alpha-CUBEBENE	0,11
48	30,59	LINALOOL trans-OXIDE	0,03
49	30,73	delta-ELEMENE	0,08
50	30,95	SESQUITERPENE	0,02
51	31,23	AROMATIC COMPOUND	0,02
52	31,43	BICYCLOELEMENE	0,06
53	31,60	YLANGENE	0,03
54	31,93	ISOMENTHONE	0,12
55	32,21	alpha-COPAENE	0,19
56	32,91	ARTEMISIA ALCOHOL	0,08
57	33,45	CAMPHOR	6,73
58	33,80	beta-BOURBONENE	0,33
59	33,99	SESQUITERPENE	0,02
60	34,24	AROMATIC COMPOUND	0,04

Disclaimer & Caution

Please refer to all relevant technical information specific to the product, prior to use, The information contained in this document is obtained from current and reliable sources, New Directions Aromatics Inc, provides the information contained herein, but makes no representation as to its comprehensiveness or accuracy, Individuals receiving this information must exercise their independent judgment in determining its appropriateness for a particular purpose, The user of the product is solely responsible for compliance with all laws and regulations applying to the use of the products, including intellectual property rights of third parties, As the ordinary or otherwise use(s) of this product is outside the control of New Directions Aromatics Inc., no representation or warranty, expressed or implied, is made as to the effect(s) of such use(s), (including damage or injury), or the results obtained, The liability of New Directions Aromatics Inc, is limited to the value of the goods and does not include any consequential loss, New Directions Aromatics Inc, shall not be liable for any errors or delays in the content, or for any actions taken in reliance thereon, New Directions Aromatics Inc, shall not be responsible for any damages resulting from use of or reliance upon this information, In the event of any dispute, the Customer hereby agrees that Jurisdiction is limited to the province of Ontario, Canada.

GCMS ANALYSIS (cont'd.)

PRODUCT NAME: YARROW ESSENTIAL OIL (BLUE) -11153

Peak	RT (min)	Component name	%
61	34,40	alpha-GURJUNENE	0,03
62	34,49	AROMATIC COMPOUND	0,03
63	34,81	BERGAMOTENE ISOMER	0,03
64	35,07	beta1-CUBEBENE	0,07
65	35,24	ISOPINOCAMPHONE	0,05
66	35,56	LINALOOL	1,90
67	36,17	LINALYL ACETATE	0,04
68	36,42	trans-p-MENTH-2-EN-1-OL	0,04
69	36,63	PINOCARVONE	0,06
70	37,00	TRIMETHYL HEPTADIENE ISOMER	0,03
71	37,29	epsilon-CADINENE	0,40
72	37,66	BORNYL ACETATE	4,69
73	37,88	ISOBORNYL ACETATE	0,07
74	38,12	alpha-trans-BERGAMOTENE	0,05
75	38,30	TERPENIC ESTER	0,12
76	38,39	beta-CUBEBENE	0,37
77		beta-ELEMENE	
78	38,85	beta-CARYOPHYLLENE	8,27
79	38,97	TERPINENE-4-OL	3,84
80	39,31	LAVANDULYL ACETATE	0,50
81	39,40	AROMADENDRENE	0,15
82	39,68	ALIPHATIC ESTER	0,03
83	39,89	TERPENIC COMPOUND	0,03
84	39,99	SESQUITERPENE	0,03
85	40,41	trans-DIHYDROCARVONE	0,09
86	40,46	4-THUYEN-2-alpha-YL ACETATE	0,29
87	40,80	CADINA-3,5-DIENE	0,03
88	41,16	UMBELLULONE	0,03
89	41,35	GERMACRENE A	0,12
90	41,58	FARNESENE ISOMER	0,10

Disclaimer & Caution

Please refer to all relevant technical information specific to the product, prior to use, The information contained in this document is obtained from current and reliable sources, New Directions Aromatics Inc, provides the information contained herein, but makes no representation as to its comprehensiveness or accuracy, Individuals receiving this information must exercise their independent judgment in determining its appropriateness for a particular purpose, The user of the product is solely responsible for compliance with all laws and regulations applying to the use of the products, including intellectual property rights of third parties, As the ordinary or otherwise use(s) of this product is outside the control of New Directions Aromatics Inc., no representation or warranty, expressed or implied, is made as to the effect(s) of such use(s), (including damage or injury), or the results obtained, The liability of New Directions Aromatics Inc, is limited to the value of the goods and does not include any consequential loss, New Directions Aromatics Inc, shall not be liable for any errors or delays in the content, or for any actions taken in reliance thereon, New Directions Aromatics Inc, shall not be responsible for any damages resulting from use of or reliance upon this information, In the event of any dispute, the Customer hereby agrees that Jurisdiction is limited to the province of Ontario, Canada.

GCMS ANALYSIS (cont'd.)

PRODUCT NAME: YARROW ESSENTIAL OIL (BLUE) -11153

Peak	RT (min)	Component name	%
91	41,60	ALLO-AROMADENDRENE	0,09
92	41,76	cis-PINOCARVYL ACETATE	0,04
93	41,98	trans-PINOCARVEOL	0,13
94	42,53	SESQUITERPENE	0,05
95	42,68	ZONARENE	0,20
96	42,77	SESQUITERPENE	0,04
97	43,08	E-beta-FARNESENE	2,35
98	43,13	alpha-HUMULENE	1,26
99	43,47	LAVANDULOL	0,31
100	43,64	cis-CHRYSANthemOL	0,12
101	44,01	Z-beta-FARNESENE	0,05
102	44,26	gamma-MUUROLENE	0,48
103	44,52	SESQUITERPENE	0,05
104	44,67	alpha-TERPINEOL	0,73
105	44,87	BORNEOL	2,87
106	45,02	TERPENIC ESTER	0,05
107	45,60	PIPERITONE cis-OXIDE	0,89
108	45,63	GERMACRENE D	6,32
109	45,86	SESQUITERPENE	0,19
110	46,07	SESQUITERPENE	0,08
111	46,20	PIPERITONE tans-OXIDE	0,24
112	46,36	PIPERITONE	0,80
113	46,54	alpha-MUUROLENE	0,39
114	46,76	beta-BISABOLENE	0,20
115	46,80	CARVONE	0,14
116	46,88	BICYCLOGERMACRENE	0,35
117	47,08	trans-PIPERITOL	0,02
118	47,36	beta-CURCUMENE	0,03
119	47,88	E,E-alpha-FARNESENE	0,32
120	48,02	GERANYL ACETATE	0,02

Disclaimer & Caution

Please refer to all relevant technical information specific to the product, prior to use, The information contained in this document is obtained from current and reliable sources, New Directions Aromatics Inc, provides the information contained herein, but makes no representation as to its comprehensiveness or accuracy, Individuals receiving this information must exercise their independent judgment in determining its appropriateness for a particular purpose, The user of the product is solely responsible for compliance with all laws and regulations applying to the use of the products, including intellectual property rights of third parties, As the ordinary or otherwise use(s) of this product is outside the control of New Directions Aromatics Inc., no representation or warranty, expressed or implied, is made as to the effect(s) of such use(s), (including damage or injury), or the results obtained, The liability of New Directions Aromatics Inc, is limited to the value of the goods and does not include any consequential loss, New Directions Aromatics Inc, shall not be liable for any errors or delays in the content, or for any actions taken in reliance thereon, New Directions Aromatics Inc, shall not be responsible for any damages resulting from use of or reliance upon this information, In the event of any dispute, the Customer hereby agrees that Jurisdiction is limited to the province of Ontario, Canada.

GCMS ANALYSIS (cont'd.)

PRODUCT NAME: YARROW ESSENTIAL OIL (BLUE) -11153

Peak	RT (min)	Component name	%
121	48,27	delta-CADINENE	0,55
122	48,36	gamma-CADINENE	0,12
123	49,04	beta-SESQUIPHELLANDRENE	0,09
124	49,22	alpha-CURCUMENE	0,10
125	49,45	CADINA-1,4-DIENE	0,04
126	49,69	p-MENTHA-1,3-DIEN-7-AL	0,02
127	50,06	MYRTENOL	0,07
128	50,27	alpha-AMORPHENE	0,05
129	50,60	NEROL	0,04
130	51,00	2-HYDROXY-PIPERITONE	0,06
131	51,29	trans-ISOGERANIOL	0,05
132	51,78	beta-DAMASCENONE	0,02
133	52,12	trans-ANETHOL	0,07
134	52,52	trans-CARVEOL	0,03
135	52,73	CALAMENENE	0,02
136	53,24	GERANIOL	0,06
137	53,80	E-GERANYL ACETONE	0,02
138	56,78	COMPOUND Mw=168	0,13
139	57,24	PIPERITENONE	0,14
140	58,30	beta-IONONE	0,04
141	58,45	cis-JASMONE	0,05
142	59,13	PIPERITENONE OXIDE	0,36
143	60,18	ISOCARYOPHYLLENE OXIDE	0,02
144	60,67	CARYOPHYLLENE OXIDE	0,26
145	61,13	4-METHYLPHENOL, 2-ALLYL-	0,05
146	61,35	AROMATIC COMPOUND	0,02
147	61,61	DEHYDRO-beta-IONONE	0,03
148	63,61	EPOXY-6,7-HUMULENE	0,03
149	63,72	NEROLIDOL	0,04
150	64,60	JUNEOL	0,02

Disclaimer & Caution

Please refer to all relevant technical information specific to the product, prior to use, The information contained in this document is obtained from current and reliable sources, New Directions Aromatics Inc, provides the information contained herein, but makes no representation as to its comprehensiveness or accuracy, Individuals receiving this information must exercise their independent judgment in determining its appropriateness for a particular purpose, The user of the product is solely responsible for compliance with all laws and regulations applying to the use of the products, including intellectual property rights of third parties, As the ordinary or otherwise use(s) of this product is outside the control of New Directions Aromatics Inc., no representation or warranty, expressed or implied, is made as to the effect(s) of such use(s), (including damage or injury), or the results obtained, The liability of New Directions Aromatics Inc, is limited to the value of the goods and does not include any consequential loss, New Directions Aromatics Inc, shall not be liable for any errors or delays in the content, or for any actions taken in reliance thereon, New Directions Aromatics Inc, shall not be responsible for any damages resulting from use of or reliance upon this information, In the event of any dispute, the Customer hereby agrees that Jurisdiction is limited to the province of Ontario, Canada.

PRODUCT NAME: YARROW ESSENTIAL OIL (BLUE) -11153

Peak	RT (min)	Component name	%
151	65,44	GLOBULOL	0,02
152	65,88	VIRIDIFLOROL	0,05
153	66,17	ALIPHATIC ESTER	0,02
154	67,36	SESQUITERPENIC COMPOUND	0,02
155	67,85	SPATHULENOL	0,05
156	68,27	PENTADECANONE, TRIMETHYL-	0,02
157	68,43	alpha-BISABOLOL B OXIDE	0,05
158	69,76	EUGENOL	0,03
159	70,07	gamma-EUDESOL	0,04
160	70,17	T-CADINOL	0,02
161	70,50	alpha-BISABOLONE A OXIDE	0,04
162	70,71	THYMOL	0,20
163	70,95	alpha-MUUROLOL	0,02
164	71,52	delta-CADINOL	0,02
165	72,08	CARVACROL	0,19
166	72,38	alpha-BISABOLOL	0,02
167	72,71	LACHNOPHYLLUM METHYL ESTER	0,05
168	73,00	beta-EUDESOL	0,06
169	73,09	alpha-CADINOL	0,04
170	75,16	CAPRIC ACID	0,05
171	75,98	CARYOPHYLLA-2,6-DIEN-5-alpha-OL	0,02
172	76,11	AROMATIC COMPOUND	0,01
173	76,58	SESQUITERPENOL	0,04
174	77,90	KETONIC COMPOUND	0,01
175	78,82	SESQUITERPENOL	0,01
176	79,72	KETONIC COMPOUND	0,01
177	80,65	CHAMAZULEN	1,17
178	81,58	alpha-BISABOLOL A OXIDE	0,04
179	88,07	PHYTOL	0,02
180	93,63	SESQUITERPENIC COMPOUND	0,02

Disclaimer & Caution

Please refer to all relevant technical information specific to the product, prior to use, The information contained in this document is obtained from current and reliable sources, New Directions Aromatics Inc, provides the information contained herein, but makes no representation as to its comprehensiveness or accuracy, Individuals receiving this information must exercise their independent judgment in determining its appropriateness for a particular purpose, The user of the product is solely responsible for compliance with all laws and regulations applying to the use of the products, including intellectual property rights of third parties, As the ordinary or otherwise use(s) of this product is outside the control of New Directions Aromatics Inc., no representation or warranty, expressed or implied, is made as to the effect(s) of such use(s), (including damage or injury), or the results obtained, The liability of New Directions Aromatics Inc, is limited to the value of the goods and does not include any consequential loss, New Directions Aromatics Inc, shall not be liable for any errors or delays in the content, or for any actions taken in reliance thereon, New Directions Aromatics Inc, shall not be responsible for any damages resulting from use of or reliance upon this information, In the event of any dispute, the Customer hereby agrees that Jurisdiction is limited to the province of Ontario, Canada.

PRODUCT NAME: YARROW ESSENTIAL OIL (BLUE) -11153

Peak	RT (min)	Component name	%
181	101,86	PALMITIC ACID	0,02
182	109,17	ALIPHATIC COMPOUND	0,11
183	117,05	ALIPHATIC COMPOUND	0,12
		TOTAL	99,88

Disclaimer & Caution

Please refer to all relevant technical information specific to the product, prior to use, The information contained in this document is obtained from current and reliable sources, New Directions Aromatics Inc, provides the information contained herein, but makes no representation as to its comprehensiveness or accuracy, Individuals receiving this information must exercise their independent judgment in determining its appropriateness for a particular purpose, The user of the product is solely responsible for compliance with all laws and regulations applying to the use of the products, including intellectual property rights of third parties, As the ordinary or otherwise use(s) of this product is outside the control of New Directions Aromatics Inc,, no representation or warranty, expressed or implied, is made as to the effect(s) of such use(s), (including damage or injury), or the results obtained, The liability of New Directions Aromatics Inc, is limited to the value of the goods and does not include any consequential loss, New Directions Aromatics Inc, shall not be liable for any errors or delays in the content, or for any actions taken in reliance thereon, New Directions Aromatics Inc, shall not be responsible for any damages resulting from use of or reliance upon this information, In the event of any dispute, the Customer hereby agrees that Jurisdiction is limited to the province of Ontario, Canada.