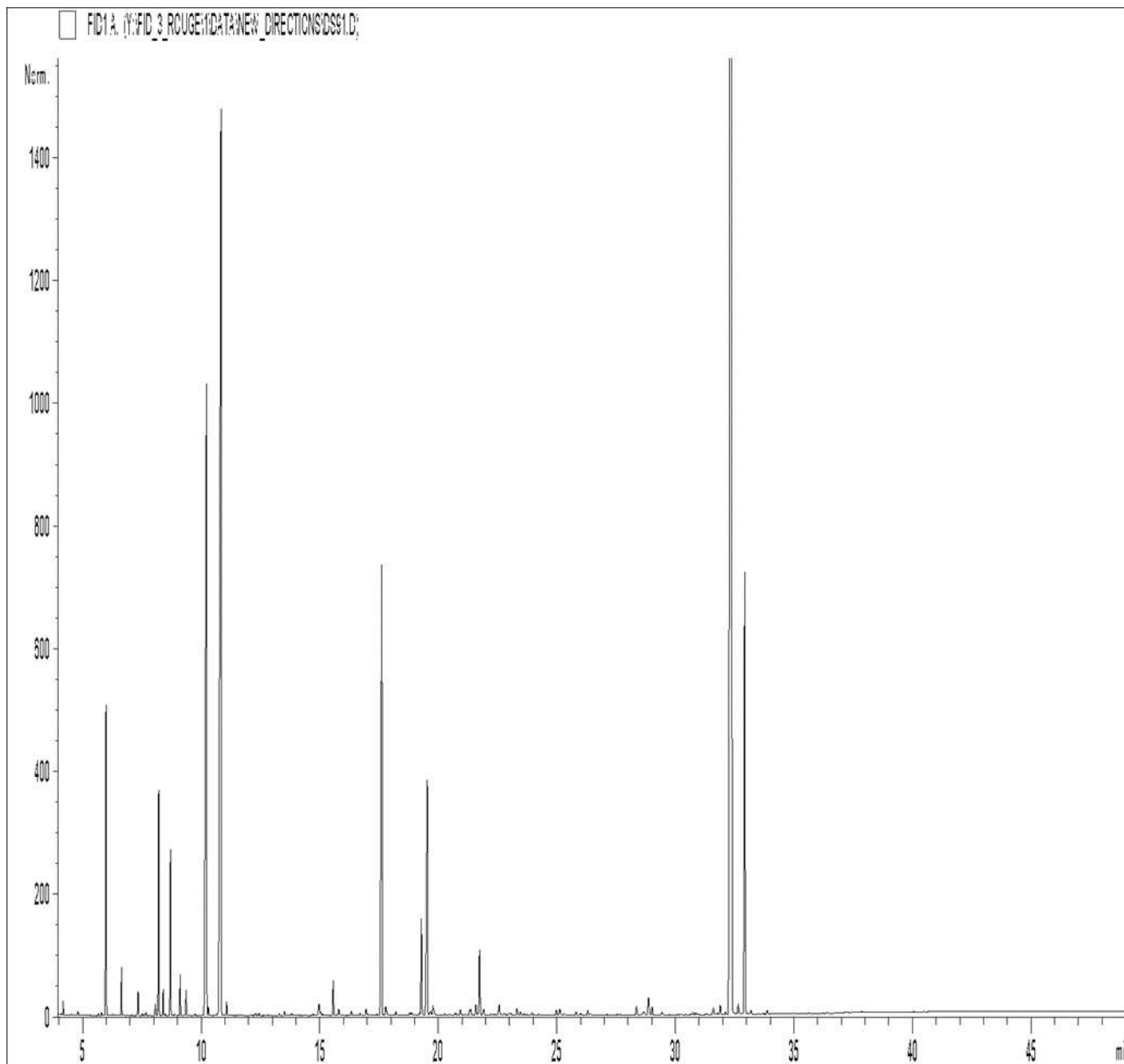


GCMS ANALYSIS

PRODUCT NAME: THYME WHITIE ESSENTIAL OIL - 11146

DATE: February 03, 2021



*Due to volume turnover, this report is not lot specific, It is representative of the quality of this oil produced by the manufacturer of this product, Specific lots may vary slightly as is the case in natural products,*

GCMS ANALYSIS (cont'd.)

PRODUCT NAME: THYME WHITIE ESSENTIAL OIL - 11146

Peak	RT (min)	Compound name	%
1	4,54	ALLYL ETHYLETHER	0,01
2	4,77	2-METHYLBUTANAL	0,01
3	4,80	ISOVALERALDEHYDE	0,02
4	5,67	METHYL 2-METHYLBUTYRATE	0,01
5	5,80	TRICYCLEN	0,02
6	5,90	<b>alpha-PINENE</b>	<b>1,24</b>
7	5,98	<b>alpha-THUYENE</b>	<b>1,20</b>
8	6,28	MENTHANE ISOMER	0,01
9	6,63	CAMPHENE	0,32
10	7,33	beta-PINENE	0,17
11	7,52	SABINENE	0,01
12	7,60	PINADIENE	0,01
13	7,66	THUYADIENE	0,02
14	8,06	delta3-CARENE	0,09
15	8,21	<b>beta-MYRCENE</b>	<b>1,70</b>
16	8,39	alpha-PHELLANDRENE	0,18
17	8,48	psi-LIMONENE	0,01
18	8,70	<b>alpha-TERPINENE</b>	<b>1,29</b>
19	8,88	1,8-CINEOLE, 2,3-DEHYDRO-	0,02
20	9,11	LIMONENE	0,32
21	9,36	1,8-CINEOLE	0,21
22		beta-PHELLANDRENE	
23	9,75	cis-beta-OCIMENE	0,01
24	10,22	<b>gamma-TERPINENE</b>	<b>8,51</b>
25	10,25	trans-beta-OCIMENE	0,04
26	10,29	3-OCTANONE	0,03
27	10,57	m-CYMENE	0,01
28	10,83	<b>p-CYMENE</b>	<b>13,32</b>
29	11,07	TERPINOLENE	0,11
30	12,29	5-HEPTEN-2-ONE, 6-METHYL-	0,02

**Disclaimer & Caution**

Please refer to all relevant technical information specific to the product, prior to use. The information contained in this document is obtained from current and reliable sources, New Directions Aromatics Inc, provides the information contained herein, but makes no representation as to its comprehensiveness or accuracy. Individuals receiving this information must exercise their independent judgment in determining its appropriateness for a particular purpose. The user of the product is solely responsible for compliance with all laws and regulations applying to the use of the products, including intellectual property rights of third parties. As the ordinary or otherwise use(s) of this product is outside the control of New Directions Aromatics Inc., no representation or warranty, expressed or implied, is made as to the effect(s) of such use(s), (including damage or injury), or the results obtained. The liability of New Directions Aromatics Inc, is limited to the value of the goods and does not include any consequential loss. New Directions Aromatics Inc, shall not be liable for any errors or delays in the content, or for any actions taken in reliance thereon. New Directions Aromatics Inc, shall not be responsible for any damages resulting from use of or reliance upon this information. In the event of any dispute, the Customer hereby agrees that Jurisdiction is limited to the province of Ontario,

GCMS ANALYSIS (cont'd.)

PRODUCT NAME: THYME WHITIE ESSENTIAL OIL - 11146

Peak	RT (min)	Compound name	%
31	12,44	1-HEXANOL	0,02
32	13,29	3-HEXEN-1-OL	0,02
33	13,51	3-OCTANOL	0,04
34	13,81	NONANAL	0,02
35	14,72	COMPOUND Mw=152	0,02
36	14,92	HEXENYLIC ESTER	0,05
37	14,95	alpha-p-DIMETHYLSTYRENE	0,06
38	14,98	LINALOOL Cis-OXIDE	0,05
39	15,05	1-OCTEN-3-OL	0,04
40	15,12	1-HEPTANOL	0,01
41	15,56	<b>trans-THUYANOL</b>	<b>0,32</b>
42	15,79	LINALOOL trans-OXIDE	0,08
43	16,33	ISOGERANIAL	0,05
44	16,47	YLANGENE	0,01
45	16,69	alpha-COPAENE	0,02
46	16,95	ISONERAL	0,08
47	17,11	CAMPHOR	0,02
48	17,31	beta-BOURBONENE	0,01
49	17,41	alpha-GURJUNENE	0,01
50	17,61	<b>LINALOOL</b>	<b>5,29</b>
51	17,78	cis-THUYANOL	0,09
52	17,82	trans-p-MENTH-2-EN-1-OL	0,03
53	18,21	BORNYL FORMIATE	0,04
54	18,78	epsilon-CADINENE	0,03
55	18,86	BORNYL ACETATE	0,04
56	18,99	METHYL THYMOL ETHER	0,01
57	19,21	alpha-trans-BERGAMOTENE	0,02
58	19,25	<b>TERPINENE-4-OL</b>	<b>0,63</b>
59	19,28	<b>METHYL CARVACROL ETHER</b>	<b>0,31</b>
60	19,53	<b>beta-CARYOPHYLLENE</b>	<b>3,15</b>

**Disclaimer & Caution**

Please refer to all relevant technical information specific to the product, prior to use. The information contained in this document is obtained from current and reliable sources, New Directions Aromatics Inc, provides the information contained herein, but makes no representation as to its comprehensiveness or accuracy. Individuals receiving this information must exercise their independent judgment in determining its appropriateness for a particular purpose. The user of the product is solely responsible for compliance with all laws and regulations applying to the use of the products, including intellectual property rights of third parties. As the ordinary or otherwise use(s) of this product is outside the control of New Directions Aromatics Inc., no representation or warranty, expressed or implied, is made as to the effect(s) of such use(s), (including damage or injury), or the results obtained. The liability of New Directions Aromatics Inc, is limited to the value of the goods and does not include any consequential loss. New Directions Aromatics Inc, shall not be liable for any errors or delays in the content, or for any actions taken in reliance thereon. New Directions Aromatics Inc, shall not be responsible for any damages resulting from use of or reliance upon this information. In the event of any dispute, the Customer hereby agrees that Jurisdiction is limited to the province of Ontario,

GCMS ANALYSIS (cont'd.)

PRODUCT NAME: THYME WHITIE ESSENTIAL OIL - 11146

Peak	RT (min)	Compound name	%
61	19,66	cis-DIHYDROCARVONE	0,07
62	19,76	AROMADENDRENE	0,10
63	19,82	6,9-GUAIADIENE	0,04
64	19,87	SESQUITERPENE	0,01
65	19,95	cis-p-MENTH-2-EN-1-OL	0,01
66	20,14	trans-DIHYDROCARVONE	0,01
67	20,27	COMPOUND Mw=166	0,02
68	20,46	CADINA-3,5-DIENE	0,03
69	20,72	ALLO-AROMADENDRENE	0,03
70	20,81	1-NONANOL	0,01
71	20,92	LAVANDULOL	0,08
72	21,15	trans-VERBENOL	0,02
73	21,32	alpha-HUMULENE	0,06
74	21,36	NERAL	0,06
75	21,58	alpha-TERPINEOL	0,12
76	21,74	BORNEOL	0,71
77	21,91	LEDENE	0,09
78	22,24	CARVENONE	0,03
79	22,35	SESQUITERPENE	0,01
80	22,42	beta-SELINENE	0,02
81	22,50	alpha-MUUROLENE	0,04
82	22,57	GERANIAL	0,11
83	22,66	LINALOOL PYRANIC cis-OXIDE	0,01
84	22,78	CARVONE	0,03
85	22,87	BICYCLOGERMACRENE	0,01
86	23,01	trans-PIPERITOL	0,04
87	23,07	trans-ISOPIPERITENOL	0,02
88	23,32	delta-CADINENE	0,08
89	23,45	gamma-CADINENE	0,04
90	23,59	METHYL SALICYLATE	0,02

**Disclaimer & Caution**

Please refer to all relevant technical information specific to the product, prior to use. The information contained in this document is obtained from current and reliable sources, New Directions Aromatics Inc, provides the information contained herein, but makes no representation as to its comprehensiveness or accuracy. Individuals receiving this information must exercise their independent judgment in determining its appropriateness for a particular purpose. The user of the product is solely responsible for compliance with all laws and regulations applying to the use of the products, including intellectual property rights of third parties. As the ordinary or otherwise use(s) of this product is outside the control of New Directions Aromatics Inc., no representation or warranty, expressed or implied, is made as to the effect(s) of such use(s), (including damage or injury), or the results obtained. The liability of New Directions Aromatics Inc, is limited to the value of the goods and does not include any consequential loss. New Directions Aromatics Inc, shall not be liable for any errors or delays in the content, or for any actions taken in reliance thereon. New Directions Aromatics Inc, shall not be responsible for any damages resulting from use of or reliance upon this information. In the event of any dispute, the Customer hereby agrees that Jurisdiction is limited to the province of Ontario,

GCMS ANALYSIS (cont'd.)

PRODUCT NAME: THYME WHITIE ESSENTIAL OIL - 11146

Peak	RT (min)	Compound name	%
91	23,70	1-DECANOL	0,02
92	23,94	NEROL	0,03
93	24,03	SABINOL ISOMER	0,01
94	24,98	p-CYMENE-8-OL	0,06
95	25,12	GERANIOL	0,08
96	25,30	CARVACRYL ACETATE	0,03
97	25,80	MYRCENOL	0,03
98	25,99	ALIPHATIC ALCOHOL	0,02
99	26,30	GERANYL BUTYRATE	0,05
100	26,41	NERYL METHYLBUTYRATE	0,02
101	27,10	alpha-CALACORENE	0,01
102	27,26	PIPERITENONE	0,01
103	27,53	trans-JASMONE	0,01
104	27,65	AROMATIC COMPOUND	0,01
105	28,35	DODECEN-1-OL ISOMER	0,11
106	28,54	ALLYL PHENOL ISOMER	0,01
107	28,68	ISOCARYOPHYLLENE OXIDE	0,07
108	28,86	CARYOPHYLLENE OXIDE	0,25
109	29,01	2,4-DIMETHYLPHENYLIC ALCOHOL	0,09
110	29,43	ALIPHATIC ESTER	0,03
111	30,73	CUMINOL	0,03
112	30,85	SESQUITERPENIC EPOXIDE	0,03
113	31,59	SPATHULENOL	0,09
114	31,74	AROMATIC COMPOUND	0,03
115	31,88	ISOTHYMOL	0,10
116	32,12	EUGENOL	0,03
117	32,36	<b>THYMOL</b>	<b>52,32</b>
118	32,65	ISOCARVACROL	0,14
119	32,92	CARVACROL	4,60
120	33,19	PHENOLIC COMPOUND	0,05

**Disclaimer & Caution**

Please refer to all relevant technical information specific to the product, prior to use. The information contained in this document is obtained from current and reliable sources, New Directions Aromatics Inc, provides the information contained herein, but makes no representation as to its comprehensiveness or accuracy. Individuals receiving this information must exercise their independent judgment in determining its appropriateness for a particular purpose. The user of the product is solely responsible for compliance with all laws and regulations applying to the use of the products, including intellectual property rights of third parties. As the ordinary or otherwise use(s) of this product is outside the control of New Directions Aromatics Inc., no representation or warranty, expressed or implied, is made as to the effect(s) of such use(s), (including damage or injury), or the results obtained. The liability of New Directions Aromatics Inc, is limited to the value of the goods and does not include any consequential loss. New Directions Aromatics Inc, shall not be liable for any errors or delays in the content, or for any actions taken in reliance thereon. New Directions Aromatics Inc, shall not be responsible for any damages resulting from use of or reliance upon this information. In the event of any dispute, the Customer hereby agrees that Jurisdiction is limited to the province of Ontario,

GCMS ANALYSIS (cont'd.)

PRODUCT NAME: THYME WHITIE ESSENTIAL OIL - 11146

Peak	RT (min)	Compound name	%
121	33,49	alpha-NOOTKATOL	0,01
122	33,65	alpha-CADINOL	0,01
123	33,87	PHENOLIC COMPOUND	0,04
124	34,95	AROMATIC COMPOUND	0,01
125	35,64	ISOAROMADENDRENE EPOXIDE	0,01
126	36,39	AROMATIC COMPOUND	0,02
127	37,85	SESQUITERPENIC EPOXIDE	0,02
128	55,07	PAEONOL	0,02
		<b>TOTAL</b>	<b>99,93</b>

**Disclaimer & Caution**

Please refer to all relevant technical information specific to the product, prior to use. The information contained in this document is obtained from current and reliable sources, New Directions Aromatics Inc, provides the information contained herein, but makes no representation as to its comprehensiveness or accuracy. Individuals receiving this information must exercise their independent judgment in determining its appropriateness for a particular purpose. The user of the product is solely responsible for compliance with all laws and regulations applying to the use of the products, including intellectual property rights of third parties. As the ordinary or otherwise use(s) of this product is outside the control of New Directions Aromatics Inc., no representation or warranty, expressed or implied, is made as to the effect(s) of such use(s), (including damage or injury), or the results obtained. The liability of New Directions Aromatics Inc, is limited to the value of the goods and does not include any consequential loss. New Directions Aromatics Inc, shall not be liable for any errors or delays in the content, or for any actions taken in reliance thereon. New Directions Aromatics Inc, shall not be responsible for any damages resulting from use of or reliance upon this information. In the event of any dispute, the Customer hereby agrees that Jurisdiction is limited to the province of Ontario,