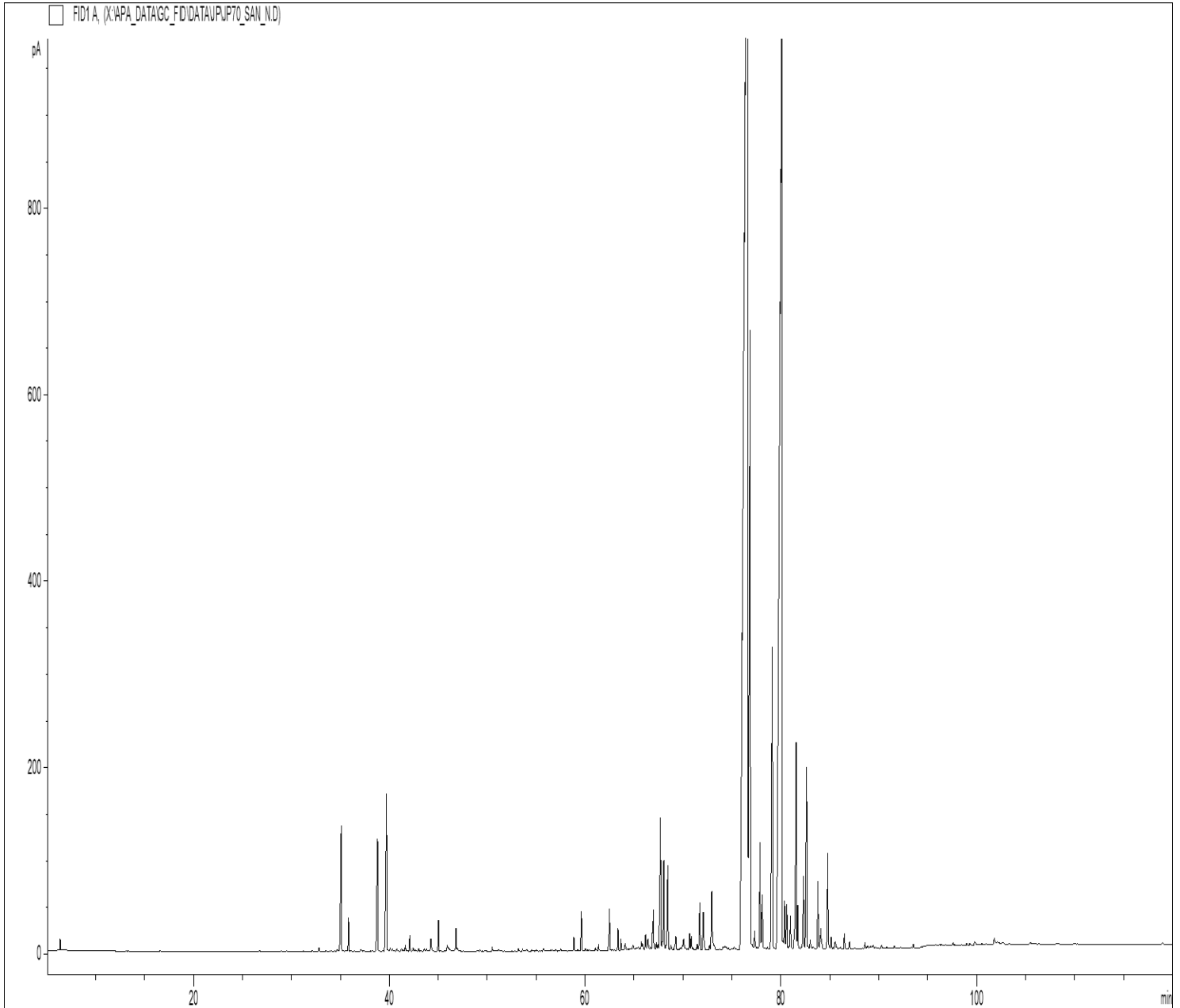


GCMS ANALYSIS

PRODUCT NAME: SANDALWOOD ESSENTIAL OIL (EAST INDIAN) - 11130

DATE: April 28, 2023



Due to volume turnover, this report is not lot specific, It is representative of the quality of this oil produced by the manufacturer of this product, Specific lots may vary slightly as is the case in natural products,

Due to volume turnover, this report is not lot specific, It is representative of the quality of this oil produced by the manufacturer of this product, Specific lots may vary slightly as is the case in natural products,

GCMS ANALYSIS (cont'd,)

PRODUCT NAME: SANDALWOOD ESSENTIAL OIL (EAST INDIAN) - 11130

Peak	RT (min)	Compound name	%
1	6.38	SANTENE	0.04
2	32.81	SESQUITERPENE	0.03
3	34.67	alpha-CEDRENE	0.01
4	35.09	alpha-SANTALENE	1.16
5	35.84	alpha-trans-BERGAMOTENE	0.21
6	37.09	SESQUITERPENE	0.02
7	38.80	epi-beta-SANTALENE	1.00
8	39.72	beta-SANTALENE	1.58
9	40.09	SESQUITERPENE	0.03
10	40.32	FARNESENE ISOMER	0.02
11	40.78	SESQUITERPENE	0.02
12	41.27	CURCUMENE ISOMER	0.03
13	41.64	FARNESENE ISOMER	0.04
14	42.10	gamma-CURCUMENE	0.10
15	42.44	PHOTOSANTALOL ISOMER	0.03
16	42.64	SESQUITERPENE	0.01
17	42.99	SESQUITERPENE	0.02
18	43.58	SESQUITERPENE	0.02
19	43.80	SESQUITERPENE	0.02
20	44.25	beta-BISABOLENE	0.12
21	45.03	beta-CURCUMENE	0.20
22	45.92	BERGAMOTENE ISOMER	0.09
23	46.81	alpha-CURCUMENE	0.15
24	46.94	trans-alpha-BISABOLENE	0.02
25	49.27	TERPENIC COMPOUND	0.01
26	50.51	PHOTOSANTALOL ISOMER	0.02
27	51.14	SESQUITERPENIC COMPOUND	0.02
28	53.19	SANTALIC COMPOUND	0.02
29	53.63	COMPOUND Mw=216	0.01
30	54.03	SESQUITERPENIC COMPOUND	0.02

Disclaimer & Caution:

Please refer to all relevant technical information specific to the product, prior to use, The information contained in this document is obtained from current and reliable sources, New Directions Aromatics Inc, provides the information contained herein, but makes no representation as to its comprehensiveness or accuracy, Individuals receiving this information must exercise their independent judgment in determining its appropriateness for a particular purpose, The user of the product is solely responsible for compliance with all laws and regulations applying to the use of the products, including intellectual property rights of third parties, As the ordinary or otherwise use(s) of this product is outside the control of New Directions Aromatics Inc,, no representation or warranty, expressed or implied, is made as to the effect(s) of such use(s), (including damage or injury), or the results obtained, The liability of New Directions Aromatics Inc, is limited to the value of the goods and does not include any consequential loss, New Directions Aromatics Inc, shall not be liable for any errors or delays in the content, or for any actions taken in reliance thereon, New Directions Aromatics Inc, shall not be responsible for any damages resulting from use of or reliance upon this information, In the event of any dispute, the Customer hereby agrees that Jurisdiction is limited to the province of Ontario, Canada

GCMS ANALYSIS (cont'd,)

PRODUCT NAME: SANDALWOOD ESSENTIAL OIL (EAST INDIAN) - 11130

Peak	RT (min)	Compound name	%
31	54.57	AROMATIC COMPOUND	0.01
32	55.75	DENDROSALIN	0.02
33	56.65	COMPOUND Mw=206	0.01
34	57.01	COMPOUND Mw=218	0.02
35	57.50	AROMATIC COMPOUND	0.02
36	58.85	HYDRATE DE 7-epi-SESQUISABINENE	0.09
37	59.62	alpha-PHOTOSANTALOL A	0.26
38	60.04	SESQUITERPENIC COMPOUND	0.02
39	60.44	SESQUITERPENIC COMPOUND	0.01
40	61.06	SESQUITERPENIC COMPOUND	0.03
41	61.37	NEROLIDOL	0.05
42	62.49	alpha-PHOTOSANTALOL B	0.32
43	62.81	TERPENIC COMPOUND	0.01
44	63.05	TERPENIC COMPOUND	0.01
45	63.36	AROMATIC COMPOUND	0.16
46	63.65	BISABOLOL ISOMER	0.09
47	64.09	SESQUITERPENIC COMPOUND	0.09
48	64.32	SESQUITERPENOL	0.01
49	64.40	AROMATIC COMPOUND	0.01
50	64.55	AROMATIC COMPOUND	0.02
51	64.71	AROMATIC COMPOUND	0.03
52	64.89	SESQUIPELLANDROL ISOMER	0.07
53	65.06	TERPENIC COMPOUND	0.02
54	65.24	TERPENIC COMPOUND	0.03
55	65.45	TERPENIC COMPOUND	0.06
56	65.76	SESQUITERPENIC COMPOUND	0.10
57	65.89	SESQUITERPENIC COMPOUND	0.06
58	66.17	AROMATIC COMPOUND	0.15
59	66.42	COMPOUND Mw=216	0.15
60	66.70	SESQUITERPENOL	0.04

Disclaimer & Caution:

Please refer to all relevant technical information specific to the product, prior to use, The information contained in this document is obtained from current and reliable sources, New Directions Aromatics Inc, provides the information contained herein, but makes no representation as to its comprehensiveness or accuracy, Individuals receiving this information must exercise their independent judgment in determining its appropriateness for a particular purpose, The user of the product is solely responsible for compliance with all laws and regulations applying to the use of the products, including intellectual property rights of third parties, As the ordinary or otherwise use(s) of this product is outside the control of New Directions Aromatics Inc,, no representation or warranty, expressed or implied, is made as to the effect(s) of such use(s), (including damage or injury), or the results obtained, The liability of New Directions Aromatics Inc, is limited to the value of the goods and does not include any consequential loss, New Directions Aromatics Inc, shall not be liable for any errors or delays in the content, or for any actions taken in reliance thereon, New Directions Aromatics Inc, shall not be responsible for any damages resulting from use of or reliance upon this information, In the event of any dispute, the Customer hereby agrees that Jurisdiction is limited to the province of Ontario, Canada

GCMS ANALYSIS (cont'd,)

PRODUCT NAME: SANDALWOOD ESSENTIAL OIL (EAST INDIAN) - 11130

Peak	RT (min)	Compound name	%
61	66.88	epi-beta-BISABOLOL	0.11
62	66.97	beta-BISABOLOL	0.32
63	67.29	SESQUITERPENIC COMPOUND	0.07
64	67.43	SESQUITERPENIC COMPOUND	0.05
65	67.70	alpha-SANTALAL	1.30
66	67.88	SESQUITERPENOL	0.06
67	68.04	SESQUITERPENOL	0.74
68	68.45	SANTALOL ISOMER	0.86
69	68.77	COMPOUND Mw=216	0.07
70	68.98	AROMATIC COMPOUND	0.01
71	69.16	COMPOUND Mw=216	0.04
72	69.27	COMPOUND Mw=216	0.12
73	69.48	TERPENIC COMPOUND	0.01
74	69.74	SESQUITERPENOL	0.04
75	69.94	alpha-BISABOLOL	0.04
76	70.07	Epi-alpha-BISABOLOL	0.13
77	70.27	SESQUITERPENIC COMPOUND	0.03
78	70.48	SESQUITERPENIC COMPOUND	0.02
79	70.68	COMPOUND Mw=166	0.13
80	70.86	SESQUITERPENIC COMPOUND	0.11
81	71.05	SESQUITERPENIC COMPOUND	0.03
82	71.47	SANTALOL ISOMER	0.06
83	71.73	SESQUITERPENIC COMPOUND	0.38
84	72.09	PHOTOSANTALOL ISOMER	0.41
85	72.73	BERGAMOTOL ISOMER	0.04
86	72.96	DIMETHYL METHYLPENTENYL NORBORNANOL	0.69
87	73.74	SESQUITERPENIC COMPOUND	0.01
88	74.13	SESQUITERPENOL	0.02
89	74.18	SESQUITERPENOL	0.03
90	74.31	SESQUITERPENOL	0.03

Disclaimer & Caution:

Please refer to all relevant technical information specific to the product, prior to use, The information contained in this document is obtained from current and reliable sources, New Directions Aromatics Inc, provides the information contained herein, but makes no representation as to its comprehensiveness or accuracy, Individuals receiving this information must exercise their independent judgment in determining its appropriateness for a particular purpose, The user of the product is solely responsible for compliance with all laws and regulations applying to the use of the products, including intellectual property rights of third parties, As the ordinary or otherwise use(s) of this product is outside the control of New Directions Aromatics Inc,, no representation or warranty, expressed or implied, is made as to the effect(s) of such use(s), (including damage or injury), or the results obtained, The liability of New Directions Aromatics Inc, is limited to the value of the goods and does not include any consequential loss, New Directions Aromatics Inc, shall not be liable for any errors or delays in the content, or for any actions taken in reliance thereon, New Directions Aromatics Inc, shall not be responsible for any damages resulting from use of or reliance upon this information, In the event of any dispute, the Customer hereby agrees that Jurisdiction is limited to the province of Ontario, Canada

GCMS ANALYSIS (cont'd,)

PRODUCT NAME: SANDALWOOD ESSENTIAL OIL (EAST INDIAN) - 11130

Peak	RT (min)	Compound name	%
91	74.44	SANTALOL ISOMER	0.03
92	74.66	SESQUITERPENIC COMPOUND	0.02
93	75.23	SESQUITERPENIC COMPOUND	0.03
94	76.64	Z-alpha-SANTALOL	46.18
95	76.88	E,E-FARNESOL	7.06
96		Z-alpha-BERGAMOTOL	
97	77.06	SESQUITERPENOL	0.07
98	77.33	SANTALOL ISOMER	0.18
99	77.58	AROMATIC COMPOUND	0.03
100	77.89	SANTALOL ISOMER	0.82
101	78.12	CURCUMENOL ISOMER	0.50
102	78.39	AROMATIC COMPOUND	0.02
103	78.64	AROMATIC COMPOUND	0.03
104	79.14	Epi-beta-SANTALOL	3.02
105	80.10	Z-beta-SANTALOL	20.86
106	80.39	SESQUITERPENOL	0.33
107	80.62	SESQUITERPENOL	0.40
108	80.83	SESQUITERPENIC COMPOUND	0.03
109	80.99	SANTALOL ISOMER	0.23
110	81.57	SANTALOL ISOMER	1.91
111	81.73	BERGAMOTOL ISOMER	0.33
112	82.32	E-beta-CURCUMENE-12-OL	0.62
113	82.64	Z-LANCEOL	1.52
114	82.80	SESQUITERPENIC COMPOUND	0.03
115	83.01	SESQUITERPENIC COMPOUND	0.08
116	83.14	SESQUITERPENIC COMPOUND	0.02
117	83.30	SANTALOL ISOMER	0.03
118	83.80	Z-NUCIFEROL	0.52
119	84.09	BERGAMOTOL ISOMER	0.26
120	84.80	COMPOUND Mw=200	0.83

Disclaimer & Caution:

Please refer to all relevant technical information specific to the product, prior to use. The information contained in this document is obtained from current and reliable sources, New Directions Aromatics Inc, provides the information contained herein, but makes no representation as to its comprehensiveness or accuracy. Individuals receiving this information must exercise their independent judgment in determining its appropriateness for a particular purpose. The user of the product is solely responsible for compliance with all laws and regulations applying to the use of the products, including intellectual property rights of third parties. As the ordinary or otherwise use(s) of this product is outside the control of New Directions Aromatics Inc., no representation or warranty, expressed or implied, is made as to the effect(s) of such use(s), (including damage or injury), or the results obtained. The liability of New Directions Aromatics Inc, is limited to the value of the goods and does not include any consequential loss. New Directions Aromatics Inc, shall not be liable for any errors or delays in the content, or for any actions taken in reliance thereon. New Directions Aromatics Inc, shall not be responsible for any damages resulting from use of or reliance upon this information. In the event of any dispute, the Customer hereby agrees that Jurisdiction is limited to the province of Ontario, Canada