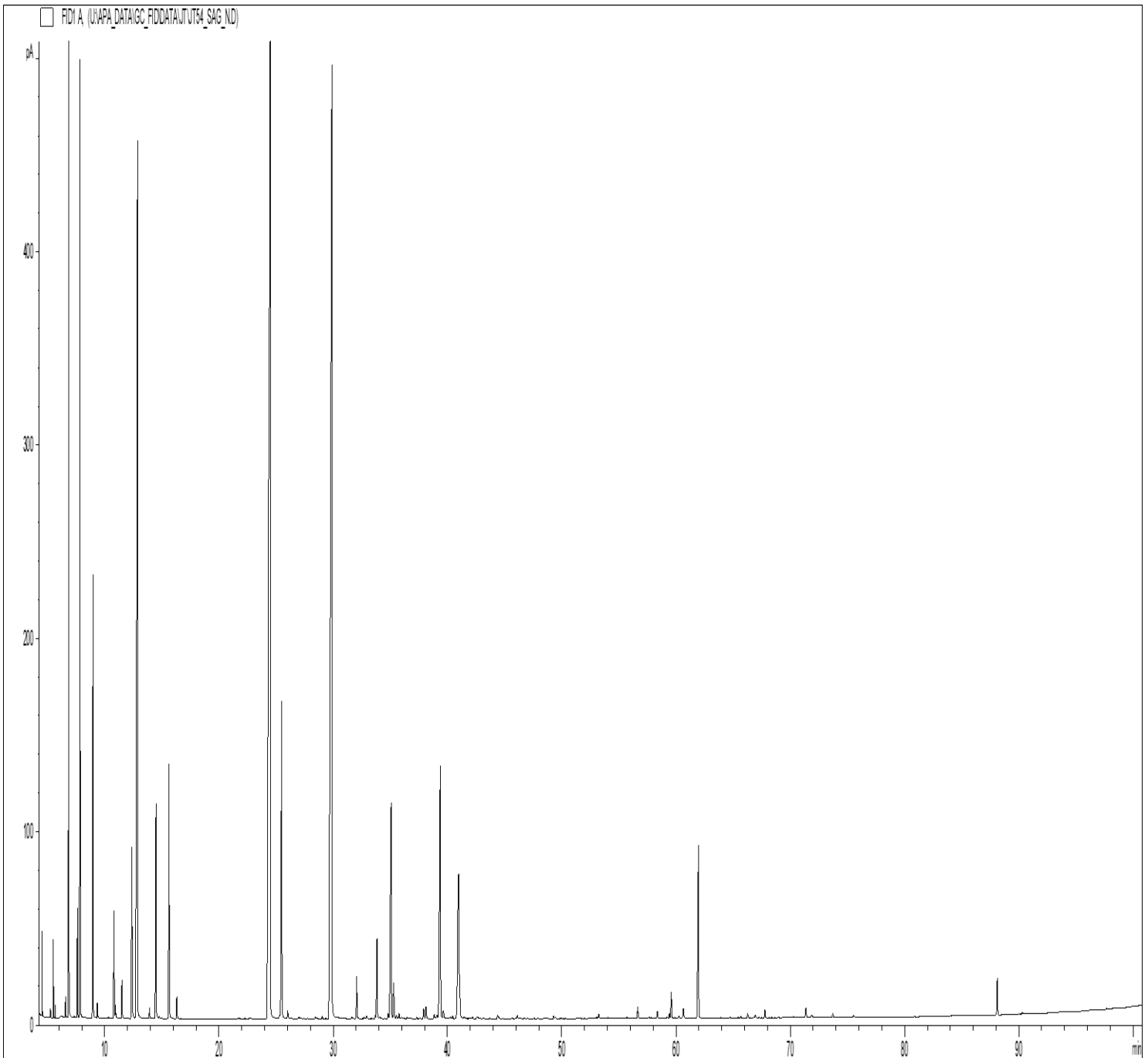


GCMS ANALYSIS

PRODUCT NAME: SAGE ORGANIC ESSENTIAL OIL – 50040

DATE: August 16, 2024



*Due to volume turnover, this report is not lot specific, It is representative of the quality of this oil produced by the manufacturer of this product, Specific lots may vary slightly as is the case in natural products,*

GCMS ANALYSIS (cont'd.)

PRODUCT NAME: SAGE ORGANIC ESSENTIAL OIL – 50040

Peak	RT (min)	Compound name	%
1	5,26	ISOVALERALDEHYDE	0,07
2	5,51	Z-SALVENE	0,35
3	5,69	E-SALVENE	0,06
4	6,57	TRICYCLENE	0,13
5	6,86	alpha-PINENE	5,91
6	6,89	alpha-THUYENE	0,21
7	7,32	beta-FENCHENE	0,01
8	7,62	alpha-FENCHENE	0,67
9	7,85	CAMPHENE	6,22
10	8,97	beta-PINENE	2,97
11	9,36	SABINENE	0,10
12	9,44	PINADIENE	0,01
13	10,35	delta3-CARENE	0,01
14	10,83	beta-MYRCENE	0,77
15	10,96	alpha-PHELLANDRENE	0,12
16	11,09	psi-LIMONENE	0,01
17	11,53	alpha-TERPINENE	0,32
18	12,39	LIMONENE	1,85
19	12,88	1,8-CINEOLE	11,46
20		beta-PHELLANDRENE	
21	13,95	cis-beta-OCIMENE	0,10
22	14,50	gamma-TERPINENE	1,80
23	14,78	trans-beta-OCIMENE	0,03
24	15,65	p-CYMENE	2,19
25	16,33	TERPINOLENE	0,21
26	21,81	1-OCTEN-3-YL ACETATE	0,01
27	22,66	3-OCTANOL	0,01
28	22,75	FENCHONE	0,02
29	24,50	alpha-THUYONE	22,46
30	25,31	alpha,p-DIMETHYLSTYRENE	0,05

**Disclaimer & Caution**

Please refer to all relevant technical information specific to the product, prior to use, The information contained in this document is obtained from current and reliable sources, New Directions Aromatics Inc, provides the information contained herein, but makes no representation as to its comprehensiveness or accuracy, Individuals receiving this information must exercise their independent judgment in determining its appropriateness for a particular purpose, The user of the product is solely responsible for compliance with all laws and regulations applying to the use of the products, including intellectual property rights of third parties, As the ordinary or otherwise use(s) of this product is outside the control of New Directions Aromatics Inc., no representation or warranty, expressed or implied, is made as to the effect(s) of such use(s), (including damage or injury), or the results obtained, The liability of New Directions Aromatics Inc, is limited to the value of the goods and does not include any consequential loss, New Directions Aromatics Inc, shall not be liable for any errors or delays in the content, or for any actions taken in reliance thereon, New Directions Aromatics Inc, shall not be responsible for any damages resulting from use of or reliance upon this information, In the event of any dispute, the Customer hereby agrees that Jurisdiction is limited to the province of Ontario, Canada,

GCMS ANALYSIS (cont'd.)

PRODUCT NAME: SAGE ORGANIC ESSENTIAL OIL – 50040

Peak	RT (min)	Compound name	%
31	25,51	beta-THUYONE	3,61
32	26,03	1-OCTEN-3-OL	0,10
33	26,36	TETRADECANE	0,01
34	27,02	trans-THUYANOL	0,04
35	27,24	LINALOOL trans-OXIDE	0,01
36	28,46	ISOLEDENE	0,02
37	28,63	alpha-CAMPHOLENAL	0,01
38	29,06	alpha-COPAENE	0,03
39	29,37	cis-3-HEXENYL ISOVALERATE	0,01
40	29,90	CAMPHOR	21,07
41	30,99	alpha-GURJUNENE	0,02
42	31,63	ISOPINOCAMPHONE	0,02
43	32,07	LINALOOL	0,42
44	32,71	LINALYL ACETATE	0,01
45	32,95	trans-p-MENTH-2-EN-1-OL	0,04
46	33,69	epsilon-CADINENE	0,03
47	33,84	BORNYL ACETATE	0,85
48	34,11	ISOBORNYL ACETATE	0,04
49	34,81	TERPENIC COMPOUND	0,06
50	35,08	beta-CARYOPHYLLENE	3,07
51	35,30	TERPINENE-4-OL	0,41
52	35,55	SESQUITERPENE	0,04
53	35,78	AROMADENDRENE	0,07
54	36,02	COPACAMPHENE	0,03
55	36,46	cis-p-MENTH-2-EN-1-OL	0,02
56	37,31	GERMACRENE A	0,01
57	37,92	ALLO-AROMADENDRENE	0,12
58	38,13	trans-SABINYL ACETATE	0,11
59	38,16	trans-PINOCARVEOL	0,05
60	38,84	THUJYLYL ALCOHOL	0,07

**Disclaimer & Caution**

Please refer to all relevant technical information specific to the product, prior to use, The information contained in this document is obtained from current and reliable sources, New Directions Aromatics Inc, provides the information contained herein, but makes no representation as to its comprehensiveness or accuracy, Individuals receiving this information must exercise their independent judgment in determining its appropriateness for a particular purpose, The user of the product is solely responsible for compliance with all laws and regulations applying to the use of the products, including intellectual property rights of third parties, As the ordinary or otherwise use(s) of this product is outside the control of New Directions Aromatics Inc., no representation or warranty, expressed or implied, is made as to the effect(s) of such use(s), (including damage or injury), or the results obtained, The liability of New Directions Aromatics Inc, is limited to the value of the goods and does not include any consequential loss, New Directions Aromatics Inc, shall not be liable for any errors or delays in the content, or for any actions taken in reliance thereon, New Directions Aromatics Inc, shall not be responsible for any damages resulting from use of or reliance upon this information, In the event of any dispute, the Customer hereby agrees that Jurisdiction is limited to the province of Ontario, Canada,

GCMS ANALYSIS (cont'd.)

PRODUCT NAME: SAGE ORGANIC ESSENTIAL OIL – 50040

Peak	RT (min)	Compound name	%
61	39,09	TERPENIC COMPOUND	0,05
62	39,38	alpha-HUMULENE	3,77
63	39,64	delta-TERPINEOL	0,12
64	40,24	MYRTENYL ACETATE	0,03
65	40,47	gamma-MUUROLENE	0,03
66	40,82	SESQUITERPENE	0,04
67	40,99	BORNEOL	1,56
68	41,10	alpha-TERPINEOL	1,27
69	41,15	LEDENE	0,32
70	41,47	GERMACRENE D	0,03
71	42,21	beta-SELINENE	0,02
72	42,60	alpha-SELINENE	0,02
73	42,69	alpha-MUUROLENE	0,02
74	43,13	BICYCLOGERMACRENE	0,01
75	44,39	delta-CADINENE	0,05
76	44,49	gamma-CADINENE	0,02
77	46,12	MYRTENOL	0,04
78	46,38	CAMPHOLENOL	0,01
79	48,70	trans-CALAMENENE	0,02
80	49,30	p-CYMENE-8-OL	0,03
81	49,44	GERANIOL	0,02
82	53,05	alpha-CALACORENE	0,02
83	53,24	PHENYLETHYL ALCOHOL	0,05
84	55,70	COMPOUND Mw=206	0,02
85	56,65	CARYOPHYLLENE OXIDE	0,14
86	57,65	KETONIC COMPOUND Mw=166	0,02
87	58,37	HUMULOL	0,08
88	59,24	LEDOL	0,02
89	59,43	COMPOUND Mw=168	0,06
90	59,59	EPOXY-6,7-HUMULENE	0,32

**Disclaimer & Caution**

Please refer to all relevant technical information specific to the product, prior to use, The information contained in this document is obtained from current and reliable sources, New Directions Aromatics Inc, provides the information contained herein, but makes no representation as to its comprehensiveness or accuracy, Individuals receiving this information must exercise their independent judgment in determining its appropriateness for a particular purpose, The user of the product is solely responsible for compliance with all laws and regulations applying to the use of the products, including intellectual property rights of third parties, As the ordinary or otherwise use(s) of this product is outside the control of New Directions Aromatics Inc., no representation or warranty, expressed or implied, is made as to the effect(s) of such use(s), (including damage or injury), or the results obtained, The liability of New Directions Aromatics Inc, is limited to the value of the goods and does not include any consequential loss, New Directions Aromatics Inc, shall not be liable for any errors or delays in the content, or for any actions taken in reliance thereon, New Directions Aromatics Inc, shall not be responsible for any damages resulting from use of or reliance upon this information, In the event of any dispute, the Customer hereby agrees that Jurisdiction is limited to the province of Ontario, Canada,

GCMS ANALYSIS (cont'd,)

PRODUCT NAME: SAGE ORGANIC ESSENTIAL OIL – 50040

Peak	RT (min)	Compound name	%
91	60,26	ELEMOL	0,04
92	60,66	AROMATIC COMPOUND Mw=168	0,12
93	61,97	VIRIDIFLOROL	2,08
94	64,73	PENTADECANONE, TRIMETHYL-	0,01
95	65,67	THYMOL	0,02
96	66,28	ISOPIMARA-8,15-DIENE	0,05
97	66,97	SESQUITERPENIC OXIDE	0,05
98	67,27	ISOCARVACROL	0,01
99	67,78	CARVACROL	0,10
100	70,27	COMPOUND Mw=270	0,02
101	71,37	SESQUITERPENIC OXIDE	0,12
102	71,90	CARYOPHYLLA-2,6-DIEN-5-alpha-OL	0,05
103	73,73	SESQUITERPENIC OXIDE	0,05
104	75,57	ALIPHATIC COMPOUND	0,03
105	88,12	Epi-MANOOL	0,44
106	90,33	ALIPHATIC COMPOUND	0,02
107		TOTAL	99,93

**Disclaimer & Caution**

Please refer to all relevant technical information specific to the product, prior to use, The information contained in this document is obtained from current and reliable sources, New Directions Aromatics Inc, provides the information contained herein, but makes no representation as to its comprehensiveness or accuracy, Individuals receiving this information must exercise their independent judgment in determining its appropriateness for a particular purpose, The user of the product is solely responsible for compliance with all laws and regulations applying to the use of the products, including intellectual property rights of third parties, As the ordinary or otherwise use(s) of this product is outside the control of New Directions Aromatics Inc., no representation or warranty, expressed or implied, is made as to the effect(s) of such use(s), (including damage or injury), or the results obtained, The liability of New Directions Aromatics Inc, is limited to the value of the goods and does not include any consequential loss, New Directions Aromatics Inc, shall not be liable for any errors or delays in the content, or for any actions taken in reliance thereon, New Directions Aromatics Inc, shall not be responsible for any damages resulting from use of or reliance upon this information, In the event of any dispute, the Customer hereby agrees that Jurisdiction is limited to the province of Ontario, Canada,