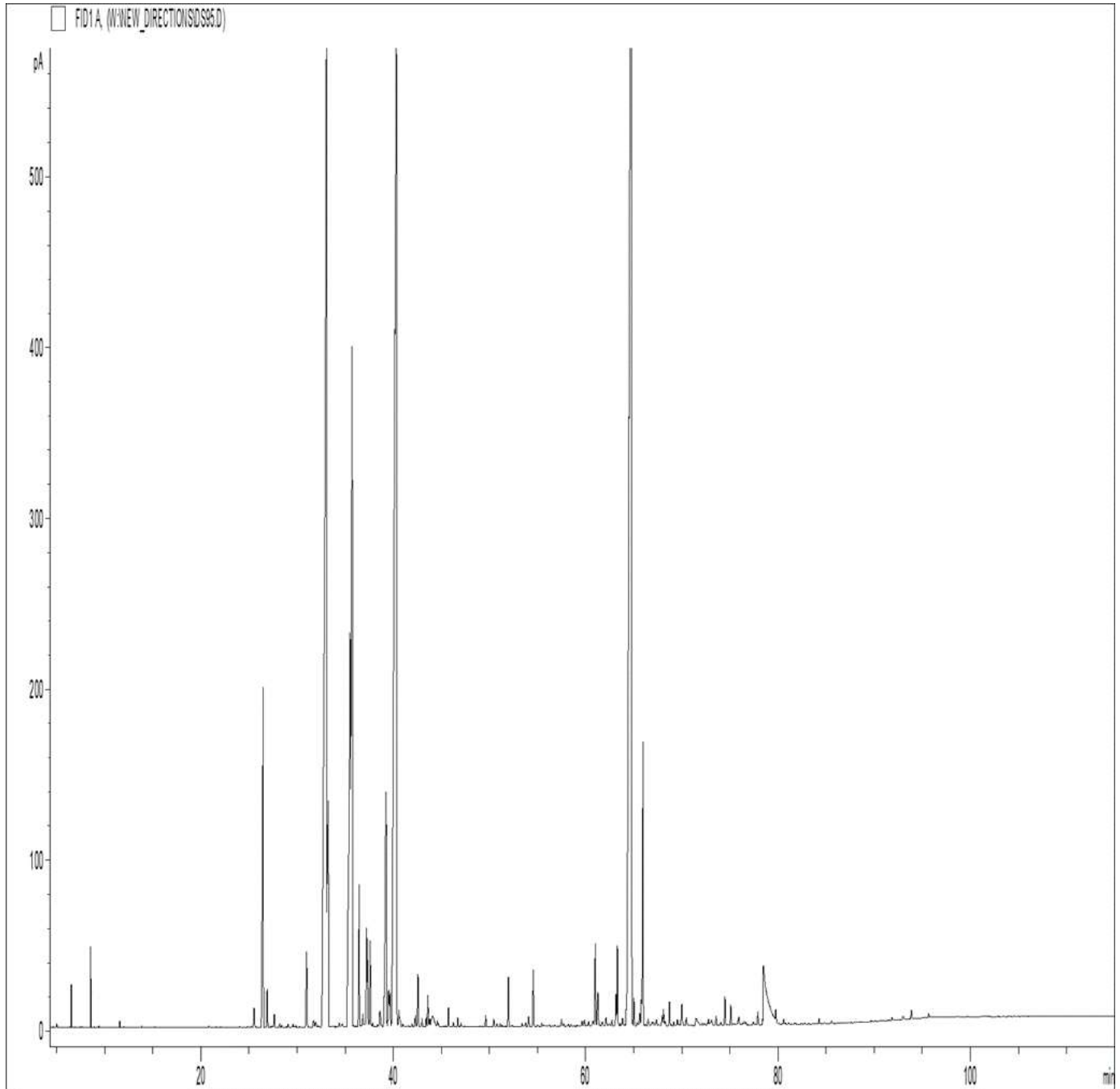




NEW DIRECTIONS AROMATICS

GCMS ANALYSIS

PRODUCT NAME: PATCHOULI ORGANIC ESSENTIAL OIL - 50046
DATE: February 03, 2021



Due to volume turnover, this report is not lot specific, It is representative of the quality of this oil produced by the manufacturer of this product, Specific lots may vary slightly as is the case in natural products,



GCMS ANALYSIS *(cont'd.)*

PRODUCT NAME: PATCHOULI ORGANIC ESSENTIAL OIL - 50046

Peak	RT (min)	Compound	%
1	6,55	alpha-PINENE	0,10
2	8,56	beta-PINENE	0,24
3	11,57	LIMONENE	0,02
4	25,53	delta-ELEMENE	0,13
5	26,48	beta-PATCHOULENE	2,84
6	26,89	alpha-COPAENE	0,23
7	27,63	PENTADECANE	0,08
8	28,19	SESQUITERPENE	0,02
9	28,40	beta-BOURBONENE	0,01
10	29,05	alpha-GURJUNENE	0,02
11	29,58	beta1-CUBEBENE	0,03
12	29,88	LINALOL	0,01
13	30,99	CYCLOSEYCHELLENE	0,57
14	31,71	ISOCARYOPHYLLENE	0,07
15	31,94	SESQUITERPENE	0,05
16	32,21	ELEMENE ISOMER	0,01
17	33,04	alpha-GUAIENE	14,07
18	33,10	beta-ELEMENE	1,23
19	33,23	beta-CARYOPHYLLENE	2,69
20	33,68	SESQUITERPENE	0,01
21	34,39	COPACAMPHENE	0,04
22	34,69	SESQUITERPENE	0,04
23	35,51	SEYCHELLENE	5,53
24	35,71	alpha-PATCHOULENE	7,02
25	35,87	SESQUITERPENE	0,01
26	36,45	gamma-PATCHOULENE	0,90
27	36,84	SELINENE ISOMER	0,12
28	37,24	alpha-HUMULENE	0,69
29	37,34	GUAIENE ISOMER	0,40
30	37,61	E-beta-FARNESENE + gamma-SELINENE	0,61

Disclaimer & Caution

Please refer to all relevant technical information specific to the product, prior to use. The information contained in this document is obtained from current and reliable sources, New Directions Aromatics Inc, provides the information contained herein, but makes no representation as to its comprehensiveness or accuracy. Individuals receiving this information must exercise their independent judgment in determining its appropriateness for a particular purpose. The user of the product is solely responsible for compliance with all laws and regulations applying to the use of the products, including intellectual property rights of third parties. As the ordinary or otherwise use(s) of this product is outside the control of New Directions Aromatics Inc., no representation or warranty, expressed or implied, is made as to the effect(s) of such use(s), (including damage or injury), or the results obtained. The liability of New Directions Aromatics Inc, is limited to the value of the goods and does not include any consequential loss. New Directions Aromatics Inc, shall not be liable for any errors or delays in the content, or for any actions taken in reliance thereon. New Directions Aromatics Inc, shall not be responsible for any damages resulting from use of or reliance upon this information. In the event of any dispute, the Customer hereby agrees that Jurisdiction is limited to the province of Ontario.

GCMS ANALYSIS (cont'd.)

PRODUCT NAME: PATCHOULI ORGANIC ESSENTIAL OIL - 50046

Peak	RT (min)	Compound	%
31	37,87	4,5-di-epi-ARISTOLOCHENE	0,03
32	38,38	SESQUITERPENE	0,02
33	38,63	GURJUNENE ISOMER	0,16
34	39,26	ACIPHYLLENE	2,81
35	39,52	PATCHOULENE ISOMER	0,35
36	39,67	SESQUITERPENE	0,27
37	40,32	alpha-BULNESENE	18,85
38	40,60	beta-SELINENE	0,21
39	41,01	alpha-SELINENE	0,02
40	41,96	SESQUITERPENE	0,03
41	42,31	delta-CADINENE	0,08
42	42,58	SELINA-3,7-DIENE	0,41
43	43,00	SESQUITERPENE Mw=202	0,06
44	43,44	SESQUITERPENE Mw=202	0,06
45	43,61	AROMATIC COMPOUND	0,20
46	43,78	SESQUITERPENE Mw=202	0,06
47	44,10	DEHYDRO AROMADENDRENE Mw=202	0,31
48	44,59	SESQUITERPENE	0,04
49	44,71	SESQUITERPENE Mw=202	0,02
50	45,74	SESQUITERPENE Mw=202	0,12
51	46,25	GERMACRENE B	0,03
52	46,71	SESQUITERPENE Mw=202	0,06
53	47,06	SESQUITERPENIC EPOXIDE	0,03
54	49,61	SESQUITERPENIC EPOXIDE	0,08
55	50,45	AROMATIC COMPOUND	0,06
56	50,78	AROMATIC COMPOUND	0,02
57	51,12	SESQUITERPENIC EPOXIDE	0,03
58	51,32	SESQUITERPENIC EPOXIDE	0,01
59	51,98	SESQUITERPENIC EPOXIDE	0,35
60	53,41	SESQUITERPENIC EPOXIDE	0,03

Disclaimer & Caution

Please refer to all relevant technical information specific to the product, prior to use. The information contained in this document is obtained from current and reliable sources, New Directions Aromatics Inc, provides the information contained herein, but makes no representation as to its comprehensiveness or accuracy. Individuals receiving this information must exercise their independent judgment in determining its appropriateness for a particular purpose. The user of the product is solely responsible for compliance with all laws and regulations applying to the use of the products, including intellectual property rights of third parties. As the ordinary or otherwise use(s) of this product is outside the control of New Directions Aromatics Inc., no representation or warranty, expressed or implied, is made as to the effect(s) of such use(s). (Including damage or injury), or the results obtained. The liability of New Directions Aromatics Inc, is limited to the value of the goods and does not include any consequential loss. New Directions Aromatics Inc, shall not be liable for any errors or delays in the content, or for any actions taken in reliance thereon. New Directions Aromatics Inc, shall not be responsible for any damages resulting from use of or reliance upon this information. In the event of any dispute, the Customer hereby agrees that Jurisdiction is limited to the province of Ontario.

GCMS ANALYSIS (cont'd.)

PRODUCT NAME: PATCHOULI ORGANIC ESSENTIAL OIL - 50046

Peak	RT (min)	Compound	%
61	53,76	SESQUITERPENIC EPOXIDE	0,04
62	54,08	ISOCARYOPHYLLENE EPOXIDE	0,09
63	54,57	CARYOPHYLLENE EPOXIDE	0,41
64	54,99	COMPOUND Mw=218	0,02
65	55,46	AROMATIC COMPOUND	0,03
66	56,21	COMPOUND Mw=220	0,02
67	56,77	COMPOUND Mw=220	0,01
68	57,49	epoxy-6,7-HUMULENE	0,06
69	57,73	NEROLIDOL	0,03
70	58,20	epi-CUBENOL	0,02
71	58,50	CUBENOL	0,02
72	59,11	SESQUITERPENOL	0,01
73	59,63	SESQUITERPENIC EPOXIDE	0,04
74	59,89	SESQUITERPENOL	0,06
75	60,32	SESQUITERPENOL	0,04
76	60,78	GUIAOL	0,07
77	61,01	NORPATCHOULENOL	0,58
78	61,27	1,5-epoxy-alpha-GUAIENE	0,33
79	61,50	SESQUITERPENOL	0,01
80	61,72	SESQUITERPENOL	0,05
81	62,12	AROMATIC COMPOUND	0,10
82	62,47	AROMATIC COMPOUND	0,02
83	62,75	SESQUITERPENOL	0,05
84	63,16	SESQUITERPENOL	0,23
85	63,31	BULNESOL ISOMER	0,54
86	63,61	SESQUITERPENOL	0,02
87	63,85	SESQUITERPENOL	0,07
88	64,78	PATCHOULOL	27,29
89	65,02	SESQUITERPENIC EPOXIDE	0,18
90	65,35	SESQUITERPENOL	0,03

Disclaimer & Caution

Please refer to all relevant technical information specific to the product, prior to use. The information contained in this document is obtained from current and reliable sources, New Directions Aromatics Inc, provides the information contained herein, but makes no representation as to its comprehensiveness or accuracy. Individuals receiving this information must exercise their independent judgment in determining its appropriateness for a particular purpose. The user of the product is solely responsible for compliance with all laws and regulations applying to the use of the products, including intellectual property rights of third parties. As the ordinary or otherwise use(s) of this product is outside the control of New Directions Aromatics Inc., no representation or warranty, expressed or implied, is made as to the effect(s) of such use(s), (including damage or injury), or the results obtained. The liability of New Directions Aromatics Inc, is limited to the value of the goods and does not include any consequential loss. New Directions Aromatics Inc, shall not be liable for any errors or delays in the content, or for any actions taken in reliance thereon. New Directions Aromatics Inc, shall not be responsible for any damages resulting from use of or reliance upon this information. In the event of any dispute, the Customer hereby agrees that Jurisdiction is limited to the province of Ontario.

GCMS ANALYSIS *(cont'd.)*

PRODUCT NAME: PATCHOULI ORGANIC ESSENTIAL OIL - 50046

Peak	RT (min)	Compound	%
91	65,63	SESQUITERPENONE	0,11
92	65,79	SESQUITERPENOL Mw=222	0,16
93	65,97	POGOSTOL	2,06
94	66,25	AROMATIC COMPOUND	0,01
95	66,50	COMPOUND Mw=218	0,07
96	66,91	SESQUITERPENIC OXIDE	0,04
97	67,01	SESQUITERPENOL Mw=220	0,04
98	67,18	SESQUITERPENOL	0,02
99	67,38	COMPOUND Mw=220	0,06
100	67,95	EUDESMA-7-EN-4-OL	0,08
101	68,09	beta-NOOTKATOL	0,11
102	68,25	SESQUITERPENOL	0,05
103	68,72	PATCHOULENONE Mw=218	0,18
104	69,18	SESQUITERPENIC OXIDE	0,03
105	69,53	CARYOPHYLLA-2,6-DIEN-5-alpha-OL	0,04
106	70,00	SESQUITERPENIC OXIDE	0,20
107	70,47	SESQUITERPENONE Mw=218	0,07
108	72,14	COMPOUND Mw=220	0,01
109	72,44	SESQUITERPENIC OXIDE	0,01
110	72,66	COMPOUND Mw=220	0,02
111	72,79	SESQUITERPENIC OXIDE	0,05
112	73,09	SESQUITERPENONE Mw=218	0,04
113	73,57	SESQUITERPENIC OXIDE	0,08
114	74,07	SESQUITERPENONE Mw=218	0,03
115	74,49	SESQUITERPENOL Mw=222	0,19
116	75,09	KETONE COMPOUND	0,14
117	75,32	AROMATIC COMPOUND	0,01
118	75,95	COMPOUND Mw=220	0,09
119	76,30	ALIPHATIC ESTER	0,03
120	76,49	SESQUITERPENIC OXIDE	0,03

Disclaimer & Caution

Please refer to all relevant technical information specific to the product, prior to use. The information contained in this document is obtained from current and reliable sources, New Directions Aromatics Inc, provides the information contained herein, but makes no representation as to its comprehensiveness or accuracy. Individuals receiving this information must exercise their independent judgment in determining its appropriateness for a particular purpose. The user of the product is solely responsible for compliance with all laws and regulations applying to the use of the products, including intellectual property rights of third parties. As the ordinary or otherwise use(s) of this product is outside the control of New Directions Aromatics Inc., no representation or warranty, expressed or implied, is made as to the effect(s) of such use(s), (Including damage or injury), or the results obtained. The liability of New Directions Aromatics Inc, is limited to the value of the goods and does not include any consequential loss. New Directions Aromatics Inc, shall not be liable for any errors or delays in the content, or for any actions taken in reliance thereon. New Directions Aromatics Inc, shall not be responsible for any damages resulting from use of or reliance upon this information. In the event of any dispute, the Customer hereby agrees that Jurisdiction is limited to the province of Ontario.

GCMS ANALYSIS (cont'd.)

PRODUCT NAME: PATCHOULI ORGANIC ESSENTIAL OIL - 50046

Peak	RT (min)	Compound	%
121	76,65	SESQUITERPENONE Mw=218	0,03
122	77,42	SESQUITERPENONE Mw=218	0,02
123	77,92	SESQUITERPENONE Mw=218	0,10
124	78,40	COMPOUND Mw=236	0,03
125	78,48	POGOSTONE	2,25
126	79,77	SESQUITERPENONE Mw=218	0,07
127	80,61	PHYTOL	0,04
128	80,77	AROMATIC COMPOUND	0,01
129	81,10	AROMATIC COMPOUND	0,02
130	81,69	AROMATIC COMPOUND Mw=234	0,01
131	82,80	AROMATIC COMPOUND Mw=234	0,01
132	84,26	AROMATIC COMPOUND Mw=234	0,03
133	85,55	AROMATIC COMPOUND Mw=234	0,02
134	91,84	AROMATIC COMPOUND	0,02
135	92,98	COMPOUND Mw=216	0,04
136	93,84	CORYMBOLON	0,07
137	95,63	SESQUITERPENOL	0,03
		TOTAL	100,00

Disclaimer & Caution

Please refer to all relevant technical information specific to the product, prior to use. The information contained in this document is obtained from current and reliable sources, New Directions Aromatics Inc, provides the information contained herein, but makes no representation as to its comprehensiveness or accuracy. Individuals receiving this information must exercise their independent judgment in determining its appropriateness for a particular purpose. The user of the product is solely responsible for compliance with all laws and regulations applying to the use of the products, including intellectual property rights of third parties. As the ordinary or otherwise use(s) of this product is outside the control of New Directions Aromatics Inc., no representation or warranty, expressed or implied, is made as to the effect(s) of such use(s), (Including damage or injury), or the results obtained. The liability of New Directions Aromatics Inc, is limited to the value of the goods and does not include any consequential loss. New Directions Aromatics Inc, shall not be liable for any errors or delays in the content, or for any actions taken in reliance thereon. New Directions Aromatics Inc, shall not be responsible for any damages resulting from use of or reliance upon this information. In the event of any dispute, the Customer hereby agrees that Jurisdiction is limited to the province of Ontario.