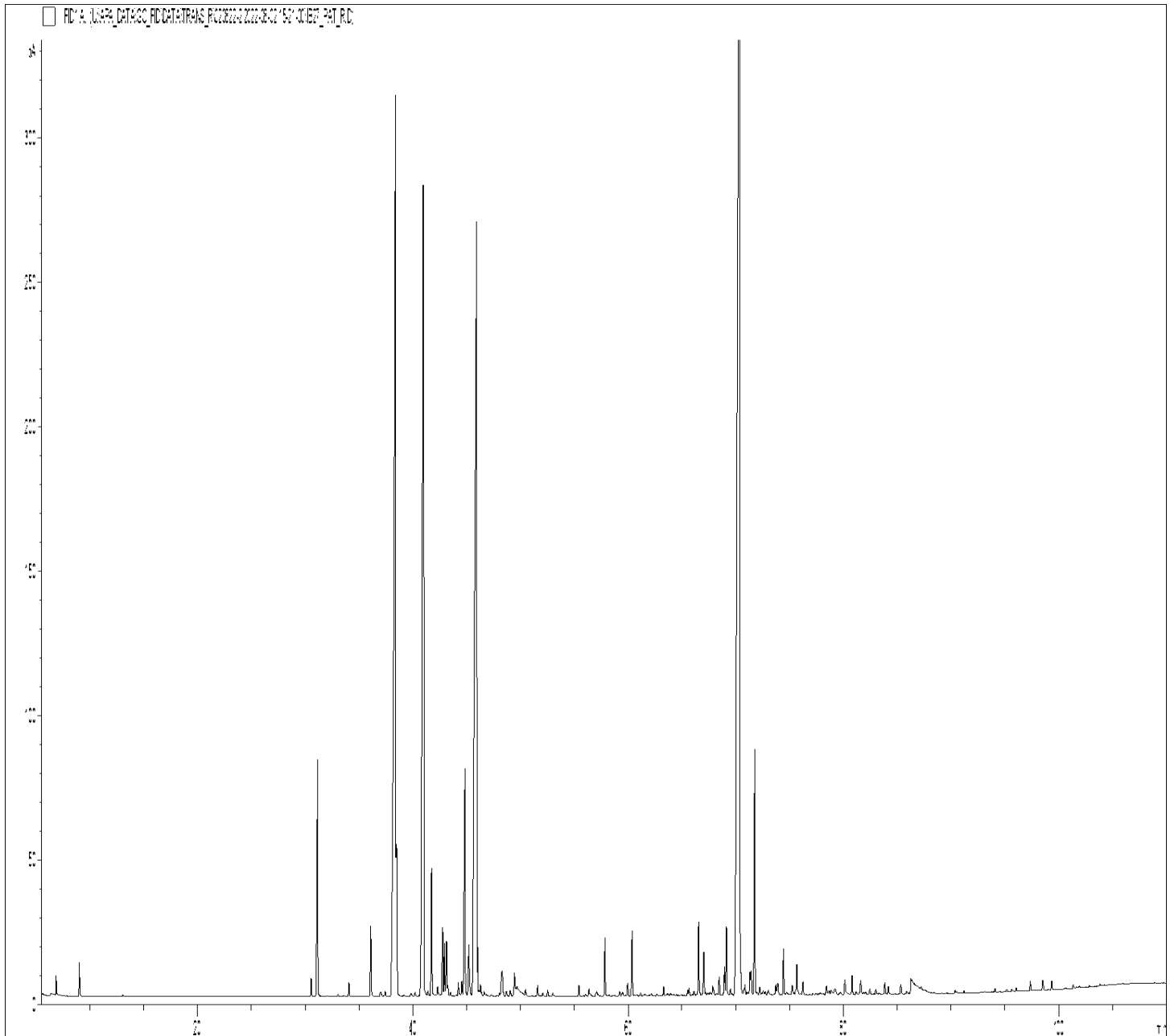


GCMS ANALYSIS

PRODUCT NAME: PATCHOULI ESSENTIAL OIL (DARK) - 11109

DATE: January 3, 2024



Due to volume turnover, this report is not lot specific, It is representative of the quality of this oil produced by the manufacturer of this product, Specific lots may vary slightly as is the case in natural products,

GCMS ANALYSIS (cont'd,)
PRODUCT NAME: PATCHOULI ESSENTIAL OIL (DARK) - 11109

Peak	RT (min)	Compound	%
1	6.87	α -PINENE	0.11
2	9.03	β -PINENE	0.23
3	13.07	LIMONENE	0.02
4	30.57	δ -ELEMENE	0.12
5	31.17	β-PATCHOULENE	2.28
6	32.06	α-COPAENE	0.01
7	33.06	SESQUITERPENE	0.02
8	34.07	PENTADECANE	0.11
9	36.10	CYCLOSEYCHELLENE	0.61
10	37.00	SESQUITERPENE	0.03
11	37.05	SESQUITERPENE	0.04
12	37.44	SESQUITERPENE	0.05
13	38.38	β -ELEMENE	14.50
14		α-GUAIONE	
15	38.49	β-CARYOPHYLLENE	1.85
16	39.84	COPACAMPHENE	0.04
17	40.22	SESQUITERPENE	0.03
18	40.90	α-PATCHOULENE	4.85
19	40.97	SEYCHELLENE	8.23
20	41.41	SESQUITERPENE	0.05
21	41.76	γ -PATCHOULENE	0.98
22	42.32	SESQUITERPENE	0.07
23	42.78	α -HUMULENE	0.56
24	42.96	SESQUITERPENE	0.39
25	43.14	E- β -FARNESENE	0.45
26	43.26	γ -SELINENE	0.08
27	43.51	4,5-di-epi-ARISTOLOCHENE	0.03
28	44.01	SESQUITERPENE	0.02
29	44.24	CALARENE ISOMER	0.11
30	44.56	SESQUITERPENE Mw=202	0.14

Disclaimer & Caution:

Please refer to all relevant technical information specific to the product, prior to use. The information contained in this document is obtained from current and reliable sources. New Directions Aromatics Inc. provides the information contained herein, but makes no representation as to its comprehensiveness or accuracy. Individuals receiving this information must exercise their independent judgment in determining its appropriateness for a particular purpose. The user of the product is solely responsible for compliance with all laws and regulations applying to the use of the products, including intellectual property rights of third parties. As the ordinary or otherwise use(s) of this product is outside the control of New Directions Aromatics Inc., no representation or warranty, expressed or implied, is made as to the effect(s) of such use(s), (including damage or injury), or the results obtained. The liability of New Directions Aromatics Inc. is limited to the value of the goods and does not include any consequential loss. New Directions Aromatics Inc. shall not be liable for any errors or delays in the content, or for any actions taken in reliance thereon. New Directions Aromatics Inc. shall not be responsible for any damages resulting from use of or reliance upon this information. In the event of any dispute, the Customer hereby agrees that Jurisdiction is limited to the province of Ontario, Canada.

GCMS ANALYSIS (cont'd.)
PRODUCT NAME: PATCHOULI ESSENTIAL OIL (DARK) - 11109

Peak	RT (min)	Compound	%
31	44.85	ACIPHYLLENE	2.34
32	45.20	PATCHOULENE ISOMER	0.58
33		β -CHAMIGRENE	
34	45.94	α-BULNESENE	16.06
35	46.01	SESQUITERPENE	0.43
36	46.14	α -SELINENE	0.07
37	46.29	β -SELINENE	0.10
38	46.41	SESQUITERPENE	0.03
39	46.64	SESQUITERPENE Mw=202	0.05
40	46.83	BICYCLOGERMACRENE	0.02
41	47.30	SESQUITERPENE	0.02
42	47.83	E,E- α -FARNESENE	0.02
43	48.06	δ -CADINENE	0.03
44	48.31	7-epi- α -SELINENE	0.44
45		SESQUITERPENE Mw=202	
46	48.70	SESQUITERPENE Mw=202	0.06
47	49.06	SESQUITERPENE Mw=202	0.07
48	49.46	SESQUITERPENE Mw=202	0.23
49	49.56	SESQUITERPENE Mw=202	0.06
50	49.68	SESQUITERPENE Mw=202	0.36
51	50.49	SESQUITERPENE Mw=202	0.08
52	51.60	SESQUITERPENE Mw=202	0.09
53	52.09	GERMACRENE B	0.03
54	52.54	SESQUITERPENE Mw=202	0.05
55	53.01	SESQUITERPENIC OXIDE	0.04
56	55.44	SESQUITERPENIC OXIDE	0.09
57	56.06	AROMATIC COMPOUND	0.02
58	56.37	AROMATIC COMPOUND	0.06
59	57.09	AROMATIC COMPOUND	0.06
60	57.86	SESQUITERPENIC OXIDE	0.45

GCMS ANALYSIS (cont'd.)
Disclaimer & Caution:

Please refer to all relevant technical information specific to the product, prior to use. The information contained in this document is obtained from current and reliable sources. New Directions Aromatics Inc. provides the information contained herein, but makes no representation as to its comprehensiveness or accuracy. Individuals receiving this information must exercise their independent judgment in determining its appropriateness for a particular purpose. The user of the product is solely responsible for compliance with all laws and regulations applying to the use of the products, including intellectual property rights of third parties. As the ordinary or otherwise use(s) of this product is outside the control of New Directions Aromatics Inc., no representation or warranty, expressed or implied, is made as to the effect(s) of such use(s), (including damage or injury), or the results obtained. The liability of New Directions Aromatics Inc. is limited to the value of the goods and does not include any consequential loss. New Directions Aromatics Inc. shall not be liable for any errors or delays in the content, or for any actions taken in reliance thereon. New Directions Aromatics Inc. shall not be responsible for any damages resulting from use of or reliance upon this information. In the event of any dispute, the Customer hereby agrees that Jurisdiction is limited to the province of Ontario, Canada.

PRODUCT NAME: PATCHOULI ESSENTIAL OIL (DARK) - 11109

Peak	RT (min)	Compound	%
61	59.23	SESQUITERPENIC OXIDE	0.04
62	59.50	SESQUITERPENIC OXIDE	0.05
63	59.97	ISOCARYOPHYLLENE OXIDE	0.10
64	60.38	CARYOPHYLLENE OXIDE	0.52
65	60.79	SESQUITERPENIC OXIDE	0.02
66	61.17	AROMATIC COMPOUND	0.03
67	61.56	SESQUITERPENIC OXIDE	0.02
68	62.16	SESQUITERPENIC OXIDE	0.02
69	62.67	SESQUITERPENIC OXIDE	0.02
70	63.31	EPOXY-6,7-HUMULENE	0.08
71	63.69	AROMATIC COMPOUND	0.03
72	63.96	NEROLIDOL	0.04
73	64.20	SESQUITERPENIC OXIDE	0.01
74	64.28	AROMATIC COMPOUND	0.01
75	64.93	SESQUITERPENIC OXIDE	0.02
76	65.54	SESQUITERPENIC OXIDE	0.04
77	65.67	ELEMOL	0.07
78	65.97	SESQUITERPENIC OXIDE	0.02
79	66.14	GUAJOL	0.05
80	66.36	SESQUITERPENIC OXIDE	0.01
81	66.56	NORPATCHOULENOL	0.66
82	67.05	1,5-epoxy- α -GUAJENE	0.47
83	67.22	SESQUITERPENIC OXIDE	0.03
84	67.41	SESQUITERPENIC OXIDE	0.04
85	67.62	SESQUITERPENIC OXIDE	0.04
86	67.87	SESQUITERPENIC OXIDE	0.13
87	68.21	SESQUITERPENIC OXIDE	0.03
88	68.35	SESQUITERPENIC OXIDE	0.01
89	68.48	SESQUITERPENIC OXIDE	0.16
90	68.97	SESQUITERPENOL	0.26

GCMS ANALYSIS (cont'd.)
PRODUCT NAME: PATCHOULI ESSENTIAL OIL (DARK) - 11109
Disclaimer & Caution:

Please refer to all relevant technical information specific to the product, prior to use. The information contained in this document is obtained from current and reliable sources. New Directions Aromatics Inc. provides the information contained herein, but makes no representation as to its comprehensiveness or accuracy. Individuals receiving this information must exercise their independent judgment in determining its appropriateness for a particular purpose. The user of the product is solely responsible for compliance with all laws and regulations applying to the use of the products, including intellectual property rights of third parties. As the ordinary or otherwise use(s) of this product is outside the control of New Directions Aromatics Inc., no representation or warranty, expressed or implied, is made as to the effect(s) of such use(s), (including damage or injury), or the results obtained. The liability of New Directions Aromatics Inc. is limited to the value of the goods and does not include any consequential loss. New Directions Aromatics Inc. shall not be liable for any errors or delays in the content, or for any actions taken in reliance thereon. New Directions Aromatics Inc. shall not be responsible for any damages resulting from use of or reliance upon this information. In the event of any dispute, the Customer hereby agrees that Jurisdiction is limited to the province of Ontario, Canada.

Peak	RT (min)	Compound	%
91	69.14	BULNESOL ISOMER	0.57
92	69.52	SESQUITERPENIC OXIDE	0.07
93	69.68	SESQUITERPENIC OXIDE	0.02
94	70.38	PATCHOULOL	30.48
95	70.40	SESQUITERPENIC OXIDE	0.18
96	70.81	SESQUITERPENIC OXIDE	0.05
97	70.87	SESQUITERPENIC OXIDE	0.09
98	71.05	SESQUITERPENIC OXIDE	0.03
99	71.33	SESQUITERPENONE	0.21
100	71.44	SESQUITERPENOL	0.23
101	71.78	POGOSTOL	2.07
102	71.96	AROMATIC COMPOUND	0.04
103	72.24	AROMATIC COMPOUND	0.08
104	72.43	SESQUITERPENIC OXIDE	0.02
105	72.56	SESQUITERPENIC OXIDE	0.05
106	72.75	SESQUITERPENIC OXIDE	0.04
107	73.05	SESQUITERPENIC OXIDE	0.08
108	73.28	SESQUITERPENIC OXIDE	0.01
109	73.74	EUDESMA-7(11)-EN-4-OL	0.11
110	73.91	β -NOOTKATOL	0.15
111	74.45	SESQUITERPENONE	0.39
112	74.72	AROMATIC COMPOUND	0.04
113	75.26	SESQUITERPENIC OXIDE	0.10
114	75.42	SESQUITERPENIC OXIDE	0.02
115	75.61	CARYOPHYLLA-2,6-DIEN-5- α -OL	0.04
116	75.69	SESQUITERPENIC OXIDE	0.29
117	76.25	SESQUITERPENONE	0.13
118	77.19	SESQUITERPENIC OXIDE	0.01
119	77.52	SESQUITERPENIC OXIDE	0.01
120	77.85	SESQUITERPENIC OXIDE	0.04

Disclaimer & Caution:

Please refer to all relevant technical information specific to the product, prior to use, The information contained in this document is obtained from current and reliable sources, New Directions Aromatics Inc, provides the information contained herein, but makes no representation as to its comprehensiveness or accuracy, Individuals receiving this information must exercise their independent judgment in determining its appropriateness for a particular purpose, The user of the product is solely responsible for compliance with all laws and regulations applying to the use of the products, including intellectual property rights of third parties, As the ordinary or otherwise use(s) of this product is outside the control of New Directions Aromatics Inc., no representation or warranty, expressed or implied, is made as to the effect(s) of such use(s), (including damage or injury), or the results obtained, The liability of New Directions Aromatics Inc, is limited to the value of the goods and does not include any consequential loss, New Directions Aromatics Inc, shall not be liable for any errors or delays in the content, or for any actions taken in reliance thereon, New Directions Aromatics Inc, shall not be responsible for any damages resulting from use of or reliance upon this information, In the event of any dispute, the Customer hereby agrees that Jurisdiction is limited to the province of Ontario, Canada

GCMS ANALYSIS (cont'd.)
PRODUCT NAME: PATCHOULI ESSENTIAL OIL (DARK) - 11109

Peak	RT (min)	Compound	%
121	78.13	SESQUITERPENIC OXIDE	0.02
122	78.45	SESQUITERPENIC OXIDE	0.10
123	78.70	SESQUITERPENIC OXIDE	0.06
124	78.86	SESQUITERPENIC OXIDE	0.07
125	79.23	SESQUITERPENIC OXIDE	0.13
126	79.73	SESQUITERPENIC OXIDE	0.04
127	80.15	SESQUITERPENONE	0.20
128	80.82	SESQUITERPENIC OXIDE	0.17
129	81.19	AROMATIC COMPOUND	0.04
130	81.62	KETONIC COMPOUND	0.16
131	81.88	SESQUITERPENIC OXIDE	0.02
132	82.08	AROMATIC COMPOUND	0.04
133	82.46	SESQUITERPENIC OXIDE	0.06
134	83.03	SESQUITERPENIC OXIDE	0.05
135	83.27	SESQUITERPENONE	0.02
136	83.86	AROMATIC COMPOUND	0.13
137	84.19	ZIERONE	0.08
138	85.35	SESQUITERPENONE	0.10
139	85.89	SESQUITERPENIC OXIDE	0.04
140	86.26	POGOSTONE	1.14
141	87.25	AROMATIC COMPOUND	0.03
142	90.40	PHYTOL	0.03
143	90.53	AROMATIC COMPOUND	0.02
144	91.21	COMPOUND Mw=236	0.02
145	94.11	AROMATIC COMPOUND	0.04
146	95.19	COMPOUND Mw=234	0.03
147	95.66	COMPOUND Mw=234	0.03
148	96.06	COMPOUND Mw=234	0.04
149	97.38	SESQUITERPENIC OXIDE	0.09
150	98.55	AROMATIC COMPOUND	0.10

GCMS ANALYSIS (cont'd.)
Disclaimer & Caution:

Please refer to all relevant technical information specific to the product, prior to use. The information contained in this document is obtained from current and reliable sources. New Directions Aromatics Inc. provides the information contained herein, but makes no representation as to its comprehensiveness or accuracy. Individuals receiving this information must exercise their independent judgment in determining its appropriateness for a particular purpose. The user of the product is solely responsible for compliance with all laws and regulations applying to the use of the products, including intellectual property rights of third parties. As the ordinary or otherwise use(s) of this product is outside the control of New Directions Aromatics Inc., no representation or warranty, expressed or implied, is made as to the effect(s) of such use(s), (including damage or injury), or the results obtained. The liability of New Directions Aromatics Inc. is limited to the value of the goods and does not include any consequential loss. New Directions Aromatics Inc. shall not be liable for any errors or delays in the content, or for any actions taken in reliance thereon. New Directions Aromatics Inc. shall not be responsible for any damages resulting from use of or reliance upon this information. In the event of any dispute, the Customer hereby agrees that Jurisdiction is limited to the province of Ontario, Canada.

PRODUCT NAME: PATCHOULI ESSENTIAL OIL (DARK) - 11109

Peak	RT (min)	Compound	%
151	99.37	CORYMBOLONE	0.08
152	101.37	SESQUITERPENIC OXIDE	0.04
153	101.96	KETONIC COMPOUND	0.02
154	102.87	SESQUITERPENIC OXIDE	0.02
155	103.85	SESQUITERPENIC OXIDE	0.02
		TOTAL	99.76

Disclaimer & Caution:

Please refer to all relevant technical information specific to the product, prior to use, The information contained in this document is obtained from current and reliable sources, New Directions Aromatics Inc, provides the information contained herein, but makes no representation as to its comprehensiveness or accuracy, Individuals receiving this information must exercise their independent judgment in determining its appropriateness for a particular purpose, The user of the product is solely responsible for compliance with all laws and regulations applying to the use of the products, including intellectual property rights of third parties, As the ordinary or otherwise use(s) of this product is outside the control of New Directions Aromatics Inc., no representation or warranty, expressed or implied, is made as to the effect(s) of such use(s), (including damage or injury), or the results obtained, The liability of New Directions Aromatics Inc, is limited to the value of the goods and does not include any consequential loss, New Directions Aromatics Inc, shall not be liable for any errors or delays in the content, or for any actions taken in reliance thereon, New Directions Aromatics Inc, shall not be responsible for any damages resulting from use of or reliance upon this information, In the event of any dispute, the Customer hereby agrees that Jurisdiction is limited to the province of Ontario, Canada