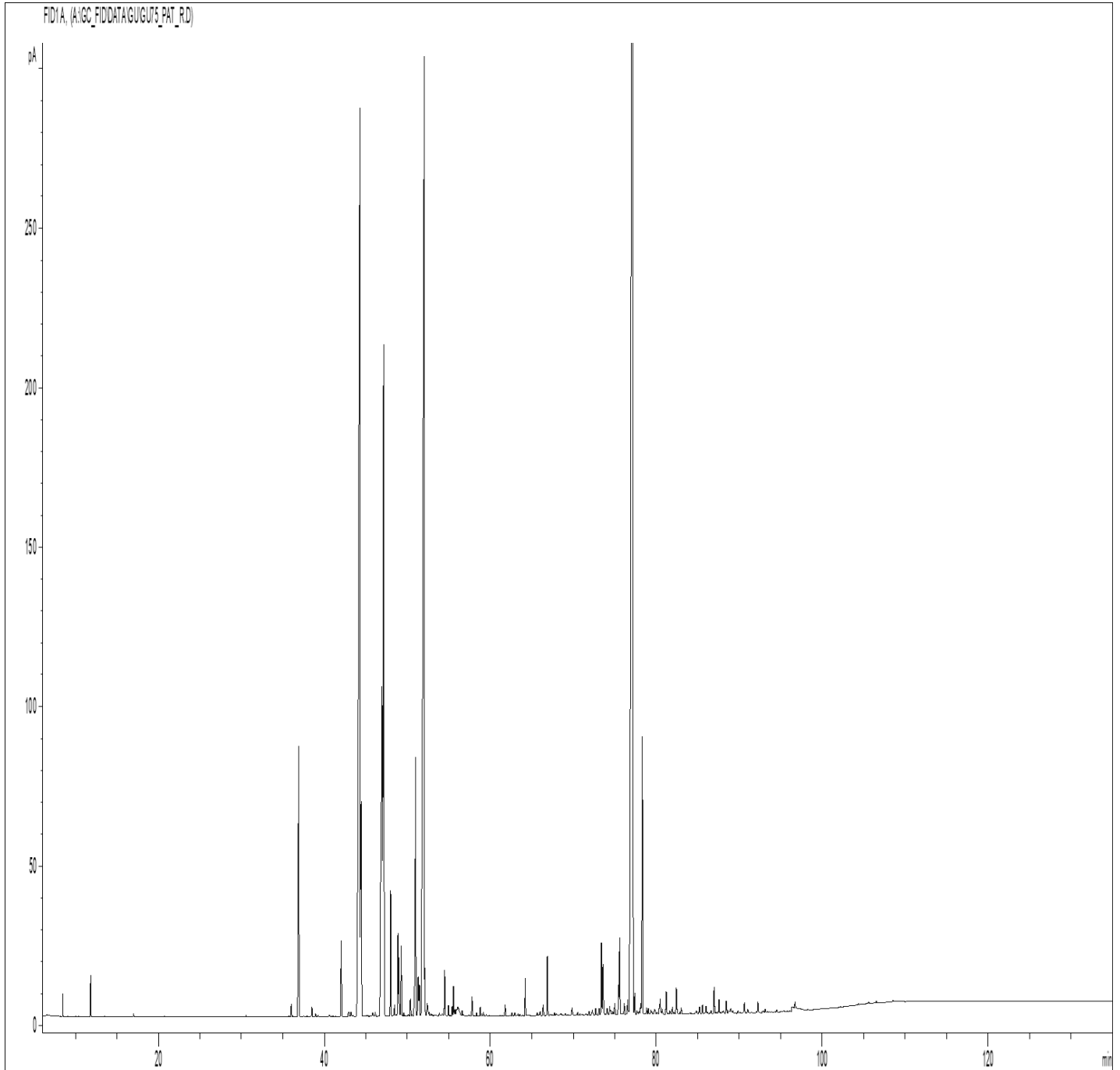


GCMS ANALYSIS

PRODUCT NAME: PATCHOULI ESSENTIAL OIL (LIGHT) – 11235

DATE: March 9, 2022



*Due to volume turnover, this report is not lot specific, It is representative of the quality of this oil produced by the manufacturer of this product, Specific lots may vary slightly as is the case in natural products,*

GCMS ANALYSIS (cont'd.)

PRODUCT NAME: PATCHOULI ESSENTIAL OIL (LIGHT) – 11235

Peak	RT (min)	Compound	%
1	8,46	alpha-PINENE	0,09
2	11,84	beta-PINENE	0,21
3	16,99	LIMONENE	0,02
4	36,01	delta-ELEMENE	0,10
5	36,91	<b>beta-PATCHOULENE</b>	<b>2,46</b>
6	38,49	<b>alpha-COPAENE</b>	<b>0,08</b>
7	38,92	SESQUITERPENE	0,02
8	39,23	beta-BOURBONENE	0,01
9	40,61	PENTADECANE	0,01
10	42,06	CYCLOSEYCHELLENE	0,59
11	42,96	beta-ELEMENE ISOMER	0,06
12	43,46	SESQUITERPENE	0,02
13	44,29	<b>alpha-GUAIENE</b>	<b>14,30</b>
14	44,30	beta-ELEMENE	
15	44,45	<b>beta-CARYOPHYLLENE</b>	<b>2,96</b>
16	45,84	COPACAMPHENE	0,04
17	46,14	SESQUITERPENE	0,04
18	46,96	<b>alpha-PATCHOULENE</b>	<b>5,15</b>
19	47,16	<b>SEYCHELLENE</b>	<b>7,81</b>
20	48,01	gamma-PATCHOULENE	0,95
21	48,47	gamma-SELINENE	0,07
22	48,90	alpha-HUMULENE	0,60
23	49,02	SESQUITERPENE	0,40
24	49,28	E-beta-FARNESENE	0,54
25	49,58	4,5-di-epi-ARISTOLOCHENE	0,02
26	50,12	SESQUITERPENE	0,02
27	50,38	CALARENE ISOMER	0,15
28	50,84	SESQUITERPENE Mw=202	0,13
29	51,02	ACIPHYLLENE	2,48
30	51,32	PATCHOULENE ISOMER	0,36

**Disclaimer & Caution**

Please refer to all relevant technical information specific to the product, prior to use, The information contained in this document is obtained from current and reliable sources, New Directions Aromatics Inc, provides the information contained herein, but makes no representation as to its comprehensiveness or accuracy, Individuals receiving this information must exercise their independent judgment in determining its appropriateness for a particular purpose, The user of the product is solely responsible for compliance with all laws and regulations applying to the use of the products, including intellectual property rights of third parties, As the ordinary or otherwise use(s) of this product is outside the control of New Directions Aromatics Inc, no representation or warranty, expressed or implied, is made as to the effect(s) of such use(s), (including damage or injury), or the results obtained, The liability of New Directions Aromatics Inc, is limited to the value of the goods and does not include any consequential loss, New Directions Aromatics Inc, shall not be liable for any errors or delays in the content, or for any actions taken in reliance thereon, New Directions Aromatics Inc, shall not be responsible for any damages resulting from use of or reliance upon this information, In the event of any dispute, the Customer hereby agrees that Jurisdiction is limited to the province of Ontario, Canada,

GCMS ANALYSIS (cont'd,)

PRODUCT NAME: PATCHOULI ESSENTIAL OIL (LIGHT) – 11235

Peak	RT (min)	Compound	%
31	51,47	beta-CHAMIGRENE	0,28
32	52,05	<b>alpha-BULNESENE</b>	<b>16,47</b>
33	52,12	SESQUITERPENE	0,24
34	52,42	beta-SELINENE	0,08
35	52,43	alpha-SELINENE	0,10
36	52,62	SESQUITERPENE	0,03
37	52,86	BICYCLOGERMACRENE	0,02
38	53,00	SESQUITERPENE	0,02
39	54,24	SESQUITERPENE Mw=202	0,02
40	54,52	7-epi-alpha-SELINENE	0,42
41	54,97	SESQUITERPENE Mw=202	0,08
42	55,42	SESQUITERPENE Mw=202	0,07
43	55,59	SESQUITERPENE Mw=202	0,22
44	55,78	SESQUITERPENE Mw=202	0,06
45	55,93	SESQUITERPENE Mw=202	0,05
46	56,11	SESQUITERPENE Mw=202	0,27
47	56,62	SESQUITERPENE	0,04
48	56,76	SESQUITERPENE Mw=202	0,02
49	57,81	SESQUITERPENE Mw=202	0,14
50	58,35	SESQUITERPENE	0,03
51	58,81	SESQUITERPENE Mw=202	0,06
52	59,02	AROMATIC COMPOUND	0,02
53	59,19	SESQUITERPENE	0,03
54	61,81	SESQUITERPENIC EPOXIDE	0,08
55	62,65	SESQUITERPENE Mw=202	0,03
56	62,98	SESQUITERPENE Mw=202	0,03
57	63,38	SESQUITERPENIC EPOXIDE	0,02
58	63,57	SESQUITERPENIC EPOXIDE	0,01
59	64,22	SESQUITERPENIC EPOXIDE	0,28
60	64,61	AROMATIC COMPOUND	0,01

**Disclaimer & Caution**

Please refer to all relevant technical information specific to the product, prior to use, The information contained in this document is obtained from current and reliable sources, New Directions Aromatics Inc, provides the information contained herein, but makes no representation as to its comprehensiveness or accuracy, Individuals receiving this information must exercise their independent judgment in determining its appropriateness for a particular purpose, The user of the product is solely responsible for compliance with all laws and regulations applying to the use of the products, including intellectual property rights of third parties, As the ordinary or otherwise use(s) of this product is outside the control of New Directions Aromatics Inc, no representation or warranty, expressed or implied, is made as to the effect(s) of such use(s), (including damage or injury), or the results obtained, The liability of New Directions Aromatics Inc, is limited to the value of the goods and does not include any consequential loss, New Directions Aromatics Inc, shall not be liable for any errors or delays in the content, or for any actions taken in reliance thereon, New Directions Aromatics Inc, shall not be responsible for any damages resulting from use of or reliance upon this information, In the event of any dispute, the Customer hereby agrees that Jurisdiction is limited to the province of Ontario, Canada,

GCMS ANALYSIS (cont'd,)

PRODUCT NAME: PATCHOULI ESSENTIAL OIL (LIGHT) – 11235

Peak	RT (min)	Compound	%
61	65,69	SESQUITERPENIC EPOXIDE	0,03
62	66,04	SESQUITERPENIC EPOXIDE	0,04
63	66,40	ISOCARYOPHYLLENE EPOXIDE	0,08
64	66,90	CARYOPHYLLENE EPOXIDE	0,45
65	67,22	SESQUITERPENONE	0,02
66	67,76	SESQUITERPENIC EPOXIDE	0,03
67	67,96	AROMATIC COMPOUND	0,03
68	68,40	SESQUITERPENIC EPOXIDE	0,02
69	68,53	SESQUITERPENIC EPOXIDE	0,03
70	69,05	AROMATIC COMPOUND	0,03
71	69,87	epoxy-6,7-HUMULENE	0,09
72	70,56	SESQUITERPENIC EPOXIDE	0,03
73	70,81	SESQUIERPENONE	0,02
74	71,03	SESQUITERPENOL	0,02
75	71,57	SESQUITERPENOL	0,02
76	71,91	SESQUITERPENIC EPOXIDE	0,04
77	72,31	ELEMOL	0,08
78	72,72	SESQUITERPENOL	0,07
79	73,15	SESQUITERPENONE	0,08
80	73,42	<b>NORPATCHOULENOL</b>	<b>0,59</b>
81	73,60	1,5-epoxy-alpha-GUAIENE	0,50
82	73,92	SESQUITERPENOL	0,02
83	74,10	SESQUITERPENOL	0,08
84	74,42	SESQUITERPENIC EPOXIDE	0,09
85	74,52	SESQUITERPENIC EPOXIDE	0,06
86	74,78	SESQUITERPENONE	0,04
87	75,02	SESQUITERPENOL	0,10
88	75,21	SESQUITERPENOL	0,01
89	75,48	SESQUITERPENOL	0,24
90	75,60	BULNESOL	0,59

**Disclaimer & Caution**

Please refer to all relevant technical information specific to the product, prior to use, The information contained in this document is obtained from current and reliable sources, New Directions Aromatics Inc, provides the information contained herein, but makes no representation as to its comprehensiveness or accuracy, Individuals receiving this information must exercise their independent judgment in determining its appropriateness for a particular purpose, The user of the product is solely responsible for compliance with all laws and regulations applying to the use of the products, including intellectual property rights of third parties, As the ordinary or otherwise use(s) of this product is outside the control of New Directions Aromatics Inc, no representation or warranty, expressed or implied, is made as to the effect(s) of such use(s), (including damage or injury), or the results obtained, The liability of New Directions Aromatics Inc, is limited to the value of the goods and does not include any consequential loss, New Directions Aromatics Inc, shall not be liable for any errors or delays in the content, or for any actions taken in reliance thereon, New Directions Aromatics Inc, shall not be responsible for any damages resulting from use of or reliance upon this information, In the event of any dispute, the Customer hereby agrees that Jurisdiction is limited to the province of Ontario, Canada,

GCMS ANALYSIS (cont'd.)

PRODUCT NAME: PATCHOULI ESSENTIAL OIL (LIGHT) – 11235

Peak	RT (min)	Compound	%
91	75,80	SESQUITERPENIC EPOXIDE	0,02
92	75,96	SESQUITERPENIC EPOXIDE	0,02
93	76,16	SESQUITERPENOL	0,10
94	76,40	SESQUITERPENIC EPOXIDE	0,02
95	76,57	SESQUITERPENIC EPOXIDE	0,14
96	76,68	SESQUITERPENOL	0,02
97	77,19	<b>PATCHOULOL</b>	<b>31,21</b>
98	77,42	SESQUITERPENIC OXIDE	0,21
99	77,72	SESQUITERPENIC OXIDE	0,06
100	77,99	SESQUITERPENONE	0,05
101	78,13	SESQUITERPENIC OXIDE	0,09
102	78,35	<b>POGOSTOL</b>	<b>2,50</b>
103	78,59	SESQUITERPENOL	0,02
104	78,83	SESQUITERPENIC OXIDE	0,06
105	79,04	SESQUITERPENIC OXIDE	0,06
106	79,36	SESQUITERPENOL	0,06
107	79,44	SESQUITERPENOL	0,03
108	79,78	SESQUITERPENIC OXIDE	0,05
109	79,87	SESQUITERPENIC OXIDE	0,04
110	80,11	SESQUITERPENIC OXIDE	0,02
111	80,38	EUDESMA-7(11)-EN-4-OL	0,08
112	80,47	beta-NOOTKATOL	0,13
113	80,59	SESQUITERPENONE	0,02
114	80,72	SESQUITERPENOL	0,06
115	81,20	SESQUITERPENONE	0,21
116	81,40	SESQUITERPENOL	0,01
117	81,63	SESQUITERPENOL	0,04
118	81,79	SESQUITERPENIC OXIDE	0,01
119	81,94	CARYOPHYLLA-2,6-DIEN-5-alpha-OL	0,06
120	82,12	SESQUITERPENIC OXIDE	0,02

**Disclaimer & Caution**

Please refer to all relevant technical information specific to the product, prior to use, The information contained in this document is obtained from current and reliable sources, New Directions Aromatics Inc, provides the information contained herein, but makes no representation as to its comprehensiveness or accuracy, Individuals receiving this information must exercise their independent judgment in determining its appropriateness for a particular purpose, The user of the product is solely responsible for compliance with all laws and regulations applying to the use of the products, including intellectual property rights of third parties, As the ordinary or otherwise use(s) of this product is outside the control of New Directions Aromatics Inc, no representation or warranty, expressed or implied, is made as to the effect(s) of such use(s), (including damage or injury), or the results obtained, The liability of New Directions Aromatics Inc, is limited to the value of the goods and does not include any consequential loss, New Directions Aromatics Inc, shall not be liable for any errors or delays in the content, or for any actions taken in reliance thereon, New Directions Aromatics Inc, shall not be responsible for any damages resulting from use of or reliance upon this information, In the event of any dispute, the Customer hereby agrees that Jurisdiction is limited to the province of Ontario, Canada,

GCMS ANALYSIS (cont'd,)

PRODUCT NAME: PATCHOULI ESSENTIAL OIL (LIGHT) – 11235

Peak	RT (min)	Compound	%
121	82,24	SESQUITERPENIC OXIDE	0,01
122	82,42	SESQUITERPENIC OXIDE	0,28
123	82,84	SESQUITERPENIC OXIDE	0,02
124	83,00	SESQUITERPENONE	0,06
125	84,04	AROMATIC COMPOUND	0,01
126	84,73	SESQUITERPENONE	0,03
127	84,84	SESQUITERPENOL	0,03
128	85,10	SESQUITERPENIC OXIDE	0,01
129	85,22	SESQUITERPENIC OXIDE	0,07
130	85,56	AROMATIC COMPOUND	0,08
131	85,77	SESQUITERPENIC OXIDE	0,01
132	86,00	SESQUITERPENOL	0,08
133	86,16	SESQUITERPENIC OXIDE	0,02
134	86,44	AROMATIC COMPOUND	0,01
135	86,60	SESQUITERPENIC OXIDE	0,03
136	86,98	SESQUITERPENOL	0,23
137	87,21	SESQUITERPENIC OXIDE	0,02
138	87,36	SESQUITERPENOL	0,01
139	87,55	SESQUITERPENONE	0,11
140	87,71	AROMATIC COMPOUND	0,02
141	87,96	SESQUITERPENOL	0,02
142	88,11	SESQUITERPENIC OXIDE	0,03
143	88,42	SESQUITERPENONE	0,13
144	88,72	SESQUITERPENIC OXIDE	0,04
145	88,97	SESQUITERPENONE	0,07
146	89,23	SESQUITERPENIC OXIDE	0,03
147	89,84	AROMATIC COMPOUND	0,02
148	90,04	AROMATIC COMPOUND	0,01
149	90,62	SESQUITERPENONE	0,10
150	91,02	SESQUITERPENIC OXIDE	0,04

**Disclaimer & Caution**

Please refer to all relevant technical information specific to the product, prior to use, The information contained in this document is obtained from current and reliable sources, New Directions Aromatics Inc, provides the information contained herein, but makes no representation as to its comprehensiveness or accuracy, Individuals receiving this information must exercise their independent judgment in determining its appropriateness for a particular purpose, The user of the product is solely responsible for compliance with all laws and regulations applying to the use of the products, including intellectual property rights of third parties, As the ordinary or otherwise use(s) of this product is outside the control of New Directions Aromatics Inc, no representation or warranty, expressed or implied, is made as to the effect(s) of such use(s), (including damage or injury), or the results obtained, The liability of New Directions Aromatics Inc, is limited to the value of the goods and does not include any consequential loss, New Directions Aromatics Inc, shall not be liable for any errors or delays in the content, or for any actions taken in reliance thereon, New Directions Aromatics Inc, shall not be responsible for any damages resulting from use of or reliance upon this information, In the event of any dispute, the Customer hereby agrees that Jurisdiction is limited to the province of Ontario, Canada,

GCMS ANALYSIS (cont'd.)

PRODUCT NAME: PATCHOULI ESSENTIAL OIL (LIGHT) – 11235

Peak	RT (min)	Compound	%
151	92,25	SESQUITERPENIC OXIDE	0,09
152	92,81	SESQUITERPENIC OXIDE	0,01
153	92,92	SESQUITERPENIC OXIDE	0,01
154	93,14	ZIERONE	0,03
155	94,49	SESQUITERPENIC OXIDE	0,02
156	96,72	POGOSTONE	0,27
157	96,72	SESQUITERPENIC OXIDE	0,04
158	105,58	AROMATIC COMPOUND	0,02
159	106,52	AROMATIC COMPOUND	0,02
160	108,49	SESQUITERPENONE	0,02
		<b>TOTAL</b>	<b>99,89</b>

**Disclaimer & Caution**

Please refer to all relevant technical information specific to the product, prior to use, The information contained in this document is obtained from current and reliable sources, New Directions Aromatics Inc, provides the information contained herein, but makes no representation as to its comprehensiveness or accuracy, Individuals receiving this information must exercise their independent judgment in determining its appropriateness for a particular purpose, The user of the product is solely responsible for compliance with all laws and regulations applying to the use of the products, including intellectual property rights of third parties, As the ordinary or otherwise use(s) of this product is outside the control of New Directions Aromatics Inc., no representation or warranty, expressed or implied, is made as to the effect(s) of such use(s), (including damage or injury), or the results obtained, The liability of New Directions Aromatics Inc, is limited to the value of the goods and does not include any consequential loss, New Directions Aromatics Inc, shall not be liable for any errors or delays in the content, or for any actions taken in reliance thereon, New Directions Aromatics Inc, shall not be responsible for any damages resulting from use of or reliance upon this information, In the event of any dispute, the Customer hereby agrees that Jurisdiction is limited to the province of Ontario, Canada,