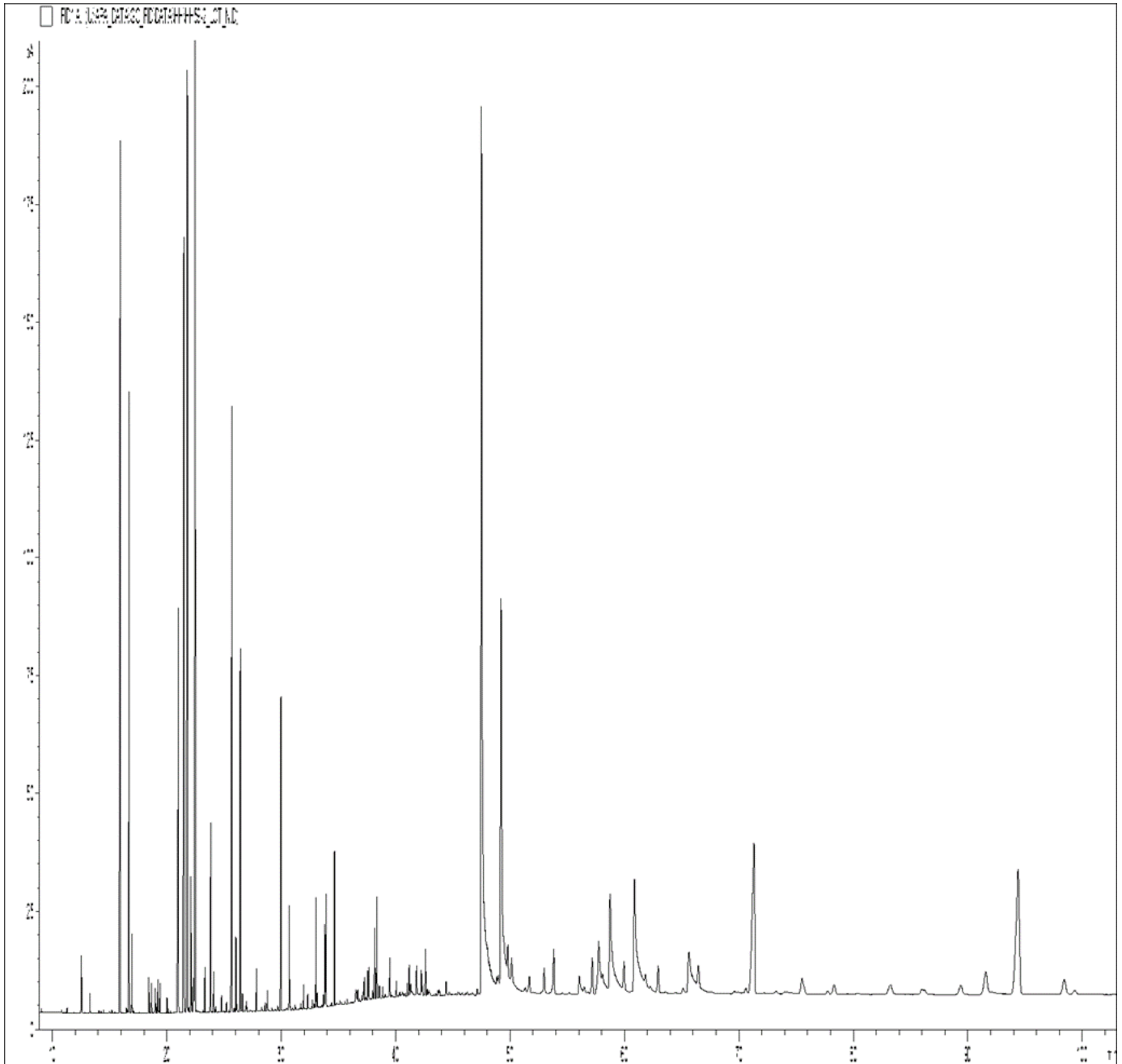


GCMS ANALYSIS

PRODUCT NAME: LOTUS PINK ABSOLUTE – 12018

DATE: April 14, 2022



Due to volume turnover, this report is not lot specific, It is representative of the quality of this oil produced by the manufacturer of this product, Specific lots may vary slightly as is the case in natural products,

GCMS ANALYSIS (cont'd,)

PRODUCT NAME: LOTUS PINK ABSOLUTE – 12018

Peak	RT (min)	Compound name	%
1	11.27	3-HEXEN-1-OL ACETATE	0.02
2	12.51	2-PENTANONE, 4-HYDROXY-4-METHYL-	0.22
3	13.26	TETRADECANE	0.07
4	15.90	PENTADECANE	5.22
5	16.46	PENTADECENE ISOMER	0.02
6	16.69	PENTADECENE ISOMER	3.00
7	16.93	LINALOOL	0.31
8	18.40	HEXADECANE	0.15
9	18.64	TERPINENE-4-OL	0.12
10	18.96	HEXADECENE ISOMER	0.13
11	19.07	HEXADECENE ISOMER	0.02
12	19.20	HEXADECENE ISOMER	0.14
13	19.39	HEXADECENE ISOMER	0.12
14	20.00	HEXADECADIENE ISOMER	0.07
15	20.11	HEXADECADIENE ISOMER	0.02
16	20.89	alpha-TERPINEOL	0.39
17	20.99	HEPTADECANE	2.18
18	21.46	HEPTADECENE ISOMER	6.18
19	21.77	HEPTADECENE ISOMER	6.19
20	21.92	HEPTADECENE ISOMER	0.03
21	22.08	BENZENE, 1,4-DIMETHOXY-	0.60
22	22.16	BENZYL ACETATE	0.12
23	22.32	Z,E-alpha-FARNESENE	0.22
24	22.46	HEPTADECADIENE ISOMER	6.41
25	23.31	OCTADECANE	0.18
26	23.81	HEPTADECATRIENE ISOMER	0.84
27	24.08	OCTADECENE ISOMER	0.17
28	24.27	OCTADECENE ISOMER	0.03
29	24.76	EXO-2-HYDROXYCINEOLE	0.09
30	25.21	BENZYL ALCOHOL	0.06

Disclaimer & Caution

Please refer to all relevant technical information specific to the product, prior to use, The information contained in this document is obtained from current and reliable sources, New Directions Aromatics Inc, provides the information contained herein, but makes no representation as to its comprehensiveness or accuracy, Individuals receiving this information must exercise their independent judgment in determining its appropriateness for a particular purpose, The user of the product is solely responsible for compliance with all laws and regulations applying to the use of the products, including intellectual property rights of third parties, As the ordinary or otherwise use(s) of this product is outside the control of New Directions Aromatics Inc., no representation or warranty, expressed or implied, is made as to the effect(s) of such use(s), (including damage or injury), or the results obtained, The liability of New Directions Aromatics Inc, is limited to the value of the goods and does not include any consequential loss, New Directions Aromatics Inc, shall not be liable for any errors or delays in the content, or for any actions taken in reliance thereon, New Directions Aromatics Inc, shall not be responsible for any damages resulting from use of or reliance upon this information, In the event of any dispute, the Customer hereby agrees that Jurisdiction is limited to the province of Ontario,

GCMS ANALYSIS (cont'd,)

PRODUCT NAME: LOTUS PINK ABSOLUTE – 12018

Peak	RT (min)	Compound name	%
31	25.66	NONADECANE	3.49
32	26.02	NONADECENE ISOMER	0.35
33	26.12	NONADECENE ISOMER	0.04
34	26.41	9-NONADECENE	1.73
35	26.58	ALIPHATIC ALCOHOL	0.10
36	26.95	NONADECADIENE ISOMER	0.05
37	27.81	EICOSANE	0.19
38	28.28	AROMATIC COMPOUND Mw=208	0.03
39	28.57	5-EICOSENE	0.04
40	28.77	ANISALDEHYDE	0.10
41	29.95	HENEICOSANE	1.52
42	30.69	HENEICOSENE ISOMER	0.47
43	30.76	PENTADECANONE, TRIMETHYL-	0.02
44	31.20	AROMATIC COMPOUND Mw=292	0.03
45	31.70	1,2-DIMETHOXY-4-(METHOXYMETHYL)-BENZENE Mw=182	0.03
46	31.94	DOCOSANE	0.11
47	32.31	METHYL PALMITATE	0.06
48	32.69	DOCOSENE ISOMER	0.04
49	33.02	ETHYL PALMITATE	0.47
50	33.12	METHYL HEXADECENOATE ISOMER	0.07
51	33.68	ALIPHATIC ESTER	0.07
52	33.81	ETHYL HEXADECENOATE ISOMER	0.37
53	33.89	TRICOSANE	0.51
54	34.64	9-TRICOSENE	0.70
55	36.49	AROMATIC ESTER	0.06
56	36.53	ALIPHATIC ALCOHOL	0.07
57	36.66	ALIPHATIC ESTER	0.07
58	37.17	METHYL STEARATE	0.06
59	37.24	METHYL OLEATE	0.13
60	37.55	METHYL LINOLEATE	0.15

Disclaimer & Caution

Please refer to all relevant technical information specific to the product, prior to use, The information contained in this document is obtained from current and reliable sources, New Directions Aromatics Inc, provides the information contained herein, but makes no representation as to its comprehensiveness or accuracy, Individuals receiving this information must exercise their independent judgment in determining its appropriateness for a particular purpose, The user of the product is solely responsible for compliance with all laws and regulations applying to the use of the products, including intellectual property rights of third parties, As the ordinary or otherwise use(s) of this product is outside the control of New Directions Aromatics Inc., no representation or warranty, expressed or implied, is made as to the effect(s) of such use(s), (including damage or injury), or the results obtained, The liability of New Directions Aromatics Inc, is limited to the value of the goods and does not include any consequential loss, New Directions Aromatics Inc, shall not be liable for any errors or delays in the content, or for any actions taken in reliance thereon, New Directions Aromatics Inc, shall not be responsible for any damages resulting from use of or reliance upon this information, In the event of any dispute, the Customer hereby agrees that Jurisdiction is limited to the province of Ontario,

GCMS ANALYSIS (cont'd,)

PRODUCT NAME: LOTUS PINK ABSOLUTE – 12018

Peak	RT (min)	Compound name	%
61	37.64	ETHYL OLEATE	0.17
62	37.98	ALIPHATIC ESTER	0.08
63	38.16	PENTACOSENE ISOMER	0.39
64	38.35	ETHYL LINOLEATE	0.51
65	38.56	ALIPHATIC ESTER	0.10
66	38.85	AROMATIC COMPOUND	0.07
67	39.47	ETHYL LINOLENATE	0.26
68	40.04	AROMATIC COMPOUND	0.08
69	40.35	AROMATIC COMPOUND	0.04
70	41.00	ACID COMPOUND Mw=338	0.07
71	41.18	HEXENYLIC ESTER	0.19
72	41.29	COMPOUND Mw=338	0.08
73	41.80	MYRISTIC ACID	0.22
74	42.23	COMPOUND Mw=336	0.17
75	42.34	ALKENE COMPOUND	0.05
76	42.60	ALIPHATIC ALCOHOL Mw=378	0.28
77	42.75	AROMATIC COMPOUND	0.05
78	43.71	HEPTACOSENE ISOMER	0.05
79	43.81	HEPTACOSENE ISOMER	0.04
80	44.39	PENTADECANOIC ACID	0.11
81	47.12	ALIPHATIC ESTER	0.05
82	47.49	PALMITIC ACID	15.39
83	49.19	PALMITOLEIC ACID	8.61
84	49.79	COMPOUND Mw=366	0.23
85	50.13	BEHENIC ALCOHOL	0.30
86	51.68	COMPOUND Mw=322	0.25
87	52.97	SQUALENE	0.32
88	53.80	COMPOUND Mw=298	0.59
89	56.05	STEARIC ACID	0.52
90	57.16	AROMATIC ESTER	0.53

Disclaimer & Caution

Please refer to all relevant technical information specific to the product, prior to use, The information contained in this document is obtained from current and reliable sources, New Directions Aromatics Inc, provides the information contained herein, but makes no representation as to its comprehensiveness or accuracy, Individuals receiving this information must exercise their independent judgment in determining its appropriateness for a particular purpose, The user of the product is solely responsible for compliance with all laws and regulations applying to the use of the products, including intellectual property rights of third parties, As the ordinary or otherwise use(s) of this product is outside the control of New Directions Aromatics Inc,, no representation or warranty, expressed or implied, is made as to the effect(s) of such use(s), (including damage or injury), or the results obtained, The liability of New Directions Aromatics Inc, is limited to the value of the goods and does not include any consequential loss, New Directions Aromatics Inc, shall not be liable for any errors or delays in the content, or for any actions taken in reliance thereon, New Directions Aromatics Inc, shall not be responsible for any damages resulting from use of or reliance upon this information, In the event of any dispute, the Customer hereby agrees that Jurisdiction is limited to the province of Ontario,

GCMS ANALYSIS (cont'd,)

PRODUCT NAME: LOTUS PINK ABSOLUTE – 12018

Peak	RT (min)	Compound name	%
91	57.60	ALIPHATIC ESTER	0.10
92	57.73	OLEIC ACID	1.80
93	58.73	OLEIC ACID ISOMER	3.73
94	59.96	AROMATIC ESTER	0.42
95	60.86	LINOLEIC ACID	4.54
96	61.81	AROMATIC COMPOUND	0.17
97	62.93	PHENYLETHYLIC ESTER	0.43
98	65.12	AROMATIC COMPOUND	0.14
99	65.65	LINOLENIC ACID	2.42
100	66.45	PHENYLETHYLIC ESTER	0.35
101	70.60	AROMATIC COMPOUND	0.10
102	71.32	ALIPHATIC ESTER Mw=406	3.97
103	73.26	AROMATIC COMPOUND	0.08
104	75.51	ALIPHATIC ESTER Mw=404	0.48
105	78.33	ALIPHATIC KETONE	0.29
106	83.25	ALIPHATIC ALCOHOL	0.37
107	85.99	AROMATIC COMPOUND	0.24
108	89.38	AROMATIC COMPOUND	0.32
109	91.56	ALIPHATIC ESTER	0.76
110	94.39	AROMATIC COMPOUND Mw=294	4.55
		TOTAL	99.43

Disclaimer & Caution

Please refer to all relevant technical information specific to the product, prior to use, The information contained in this document is obtained from current and reliable sources, New Directions Aromatics Inc, provides the information contained herein, but makes no representation as to its comprehensiveness or accuracy, Individuals receiving this information must exercise their independent judgment in determining its appropriateness for a particular purpose, The user of the product is solely responsible for compliance with all laws and regulations applying to the use of the products, including intellectual property rights of third parties, As the ordinary or otherwise use(s) of this product is outside the control of New Directions Aromatics Inc., no representation or warranty, expressed or implied, is made as to the effect(s) of such use(s), (including damage or injury), or the results obtained, The liability of New Directions Aromatics Inc, is limited to the value of the goods and does not include any consequential loss, New Directions Aromatics Inc, shall not be liable for any errors or delays in the content, or for any actions taken in reliance thereon, New Directions Aromatics Inc, shall not be responsible for any damages resulting from use of or reliance upon this information, In the event of any dispute, the Customer hereby agrees that Jurisdiction is limited to the province of Ontario,