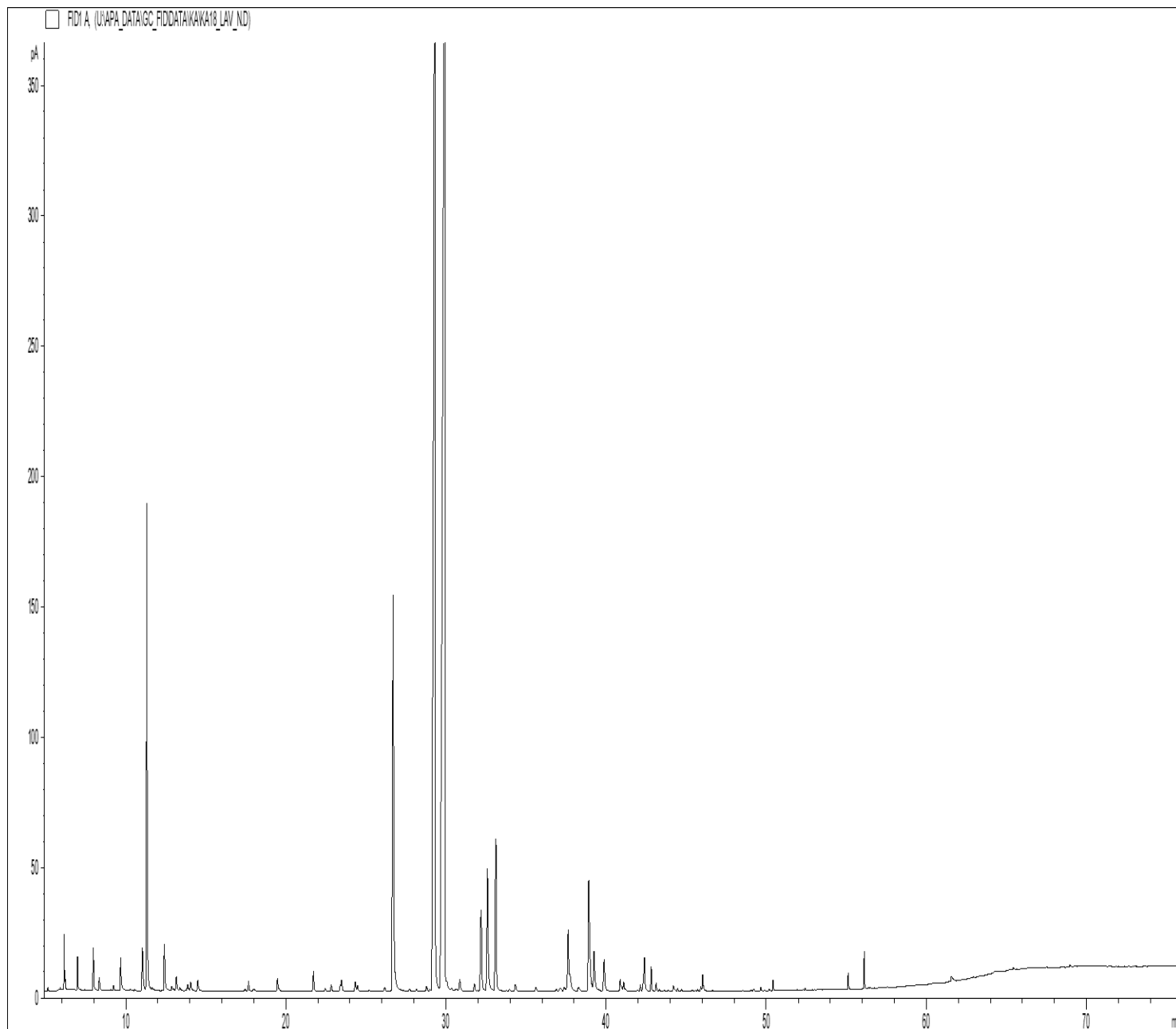


**GCMS ANALYSIS**

**PRODUCT NAME: LAVANDIN GROSSO ESSENTIAL OIL- 11156**

**DATE: September 13, 2023**



*Due to volume turnover, this report is not lot specific, it is representative of the quality of this oil produced by the manufacturer of this product, Specific lots may vary slightly as is the case in natural products,*

**GCMS ANALYSIS (cont'd.)**

**PRODUCT NAME: LAVANDIN GROSSO ESSENTIAL OIL- 11156**

Peak	RT (min)	Component name	%
1	5.14	HEXANE, 1-METHOXY-	0.03
2	5.92	TRICYCLEN	0.02
3	6.17	alpha-PINENE	0.40
4	6.22	alpha-THUYENE	0.12
5	6.99	CAMPHENE	0.31
6	7.98	beta-PINENE	0.44
7	8.36	SABINENE	0.15
8	9.24	delta3-CARENE	0.06
9	9.67	beta-MYRCENE	0.40
10	9.75	alpha-PHELLANDRENE	0.09
11	10.27	alpha-TERPINENE	0.03
12	10.56	1,8-CINEOLE, 2,3-DEHYDRO-	0.02
13	11.03	LIMONENE	0.67
14	11.31	1,8-CINEOLE	5.69
15		beta-PHELLANDRENE	
16	11.65	BUTYL BUTYRATE	0.07
17	12.40	cis-beta-OCIMENE	0.64
18	12.86	gamma-TERPINENE	0.06
19	12.99	COMPOUND Mw=122	0.02
20	13.15	trans-beta-OCIMENE	0.22
21	13.38	3-OCTANONE	0.06
22	13.72	m-CYMENE	0.01
23	13.86	p-CYMENE	0.10
24	14.05	HEXYL ACETATE	0.15
25	14.49	TERPINOLENE	0.18
26	17.44	HEXYL PROPIONATE	0.04
27	17.66	HEXYL METHYLPROPIONATE	0.14
28	17.98	1-HEXANOL	0.06
29	19.40	ALLO-OCIMENE	0.02
30	19.47	1-OCTEN-3-YL ACETATE	0.20

**Disclaimer & Caution**

Please refer to all relevant technical information specific to the product, prior to use, The information contained in this document is obtained from current and reliable sources, New Directions Aromatics Inc, provides the information contained herein, but makes no representation as to its comprehensiveness or accuracy, Individuals receiving this information must exercise their independent judgment in determining its appropriateness for a particular purpose, The user of the product is solely responsible for compliance with all laws and regulations applying to the use of the products, including intellectual property rights of third parties, As the ordinary or otherwise use(s) of this product is outside the control of New Directions Aromatics Inc,, no representation or warranty, expressed or implied, is made as to the effect(s) of such use(s), (including damage or injury), or the results obtained, The liability of New Directions Aromatics Inc, is limited to the value of the goods and does not include any consequential loss, New Directions Aromatics Inc, shall not be liable for any errors or delays in the content, or for any actions taken in reliance thereon, New Directions Aromatics Inc, shall not be responsible for any damages resulting from use of or reliance upon this information, In the event of any dispute, the Customer hereby agrees that Jurisdiction is limited to the province of Ontario, Canada

**GCMS ANALYSIS (cont'd.)**

**PRODUCT NAME: LAVANDIN GROSSO ESSENTIAL OIL- 11156**

Peak	RT (min)	Component name	%
31	19.47	3-HEXEN-1-OL	0.20
32	21.71	HEXYL BUTYRATE	0.30
33	22.44	HEXYL 2-METHYLBUTYRATE	0.05
34	22.82	LINALOOL cis-OXIDE	0.10
35	23.39	1-OCTEN-3-OL	0.07
36	23.47	HEXYL 3-METHYLBUTYRATE	0.20
37	24.32	trans-THUYANOL	0.15
38	24.47	LINALOOL trans-OXIDE	0.10
39	25.20	OCTYL ACETATE	0.03
40	25.67	alpha-CAMPHOLENAL	0.02
41	26.16	DAUCENE	0.07
42	26.69	CAMPHOR	7.27
43	27.70	beta-BOURBONENE	0.04
44	28.15	alpha-GURJUNENE	0.03
45	28.78	BERGAMOTENE ISOMER	0.09
46	28.99	cis-THUYANOL	0.03
47	29.31	LINALOOL	29.59
48	29.91	LINALYL ACETATE	34.48
49	30.04	BERGAMOTENE ISOMER	0.25
50	30.34	BORNYL FORMATE	0.08
51	30.66	alpha-cis-BERGAMOTENE	0.07
52	30.85	alpha-SANTALENE	0.24
53	30.95	BORNYL ACETATE	0.04
54	31.77	alpha-trans-BERGAMOTENE	0.13
55	31.94	beta-ELEMENE	0.01
56	32.19	beta-CARYOPHYLLENE	1.54
57	32.58	TERPINENE-4-OL	2.47
58	33.11	LAVANDULYL ACETATE	2.65
59	33.77	HEXYL CAPROATE	0.01
60	33.96	MYRTENAL	0.03

**Disclaimer & Caution**

Please refer to all relevant technical information specific to the product, prior to use, The information contained in this document is obtained from current and reliable sources, New Directions Aromatics Inc, provides the information contained herein, but makes no representation as to its comprehensiveness or accuracy, Individuals receiving this information must exercise their independent judgment in determining its appropriateness for a particular purpose, The user of the product is solely responsible for compliance with all laws and regulations applying to the use of the products, including intellectual property rights of third parties, As the ordinary or otherwise use(s) of this product is outside the control of New Directions Aromatics Inc,, no representation or warranty, expressed or implied, is made as to the effect(s) of such use(s), (including damage or injury), or the results obtained, The liability of New Directions Aromatics Inc, is limited to the value of the goods and does not include any consequential loss, New Directions Aromatics Inc, shall not be liable for any errors or delays in the content, or for any actions taken in reliance thereon, New Directions Aromatics Inc, shall not be responsible for any damages resulting from use of or reliance upon this information, In the event of any dispute, the Customer hereby agrees that Jurisdiction is limited to the province of Ontario, Canada

**GCMS ANALYSIS (cont'd.)**

**PRODUCT NAME: LAVANDIN GROSSO ESSENTIAL OIL- 11156**

Peak	RT (min)	Component name	%
61	34.33	HEXYL TIGLATE	0.15
62	35.13	CADINA-3,5-DIENE	0.02
63	35.61	FARNESENE ISOMER	0.09
64	36.17	ALLO-AROMADENDRENE	0.01
65	36.88	ZONARENE	0.05
66	37.13	FARNESENE ISOMER	0.05
67	37.25	alpha-HUMULENE	0.04
68	37.38	delta-TERPINEOL	0.09
69	37.62	E-beta-FARNESENE	1.20
70	37.75	LAVANDULOL	0.36
71	38.20	Z-beta-FARNESENE	0.03
72	38.27	LAVANDULYL ISOBUTYRATE	0.06
73	38.91	BORNEOL	2.57
74	39.24	alpha-TERPINEOL	0.91
75	39.87	GERMACRENE D	0.65
76	40.37	MENTHADIENOL ISOMER	0.02
77	40.88	NERYL ACETATE	0.19
78	40.97	BICYCLOGERMACRENE	0.06
79	41.09	beta-BISABOLENE	0.15
80	41.15	cis-PYRANIC LINALOOL OXIDE	0.03
81	41.95	SESQUITERPENE	0.04
82	42.13	LAVANDULYL BUTYRATE	0.08
83	42.30	E,E-alpha-FARNESENE	0.08
84	42.38	gamma-CADINENE	0.35
85	42.40	GERANYL ACETATE	0.25
86	42.60	trans-PYRANIC LINALOOL OXIDE	0.02
87	42.81	LAVANDULYL METHYLBUTYRATE	0.30
88	43.12	beta-SESQUIPHELLANDRENE	0.12
89	43.32	trans-alpha-BISABOLENE	0.04
90	43.60	MYRTENOL	0.03

**Disclaimer & Caution**

Please refer to all relevant technical information specific to the product, prior to use, The information contained in this document is obtained from current and reliable sources, New Directions Aromatics Inc, provides the information contained herein, but makes no representation as to its comprehensiveness or accuracy, Individuals receiving this information must exercise their independent judgment in determining its appropriateness for a particular purpose, The user of the product is solely responsible for compliance with all laws and regulations applying to the use of the products, including intellectual property rights of third parties, As the ordinary or otherwise use(s) of this product is outside the control of New Directions Aromatics Inc,, no representation or warranty, expressed or implied, is made as to the effect(s) of such use(s), (including damage or injury), or the results obtained, The liability of New Directions Aromatics Inc, is limited to the value of the goods and does not include any consequential loss, New Directions Aromatics Inc, shall not be liable for any errors or delays in the content, or for any actions taken in reliance thereon, New Directions Aromatics Inc, shall not be responsible for any damages resulting from use of or reliance upon this information, In the event of any dispute, the Customer hereby agrees that Jurisdiction is limited to the province of Ontario, Canada

**GCMS ANALYSIS (cont'd.)**

**PRODUCT NAME: LAVANDIN GROSSO ESSENTIAL OIL- 11156**

Peak	RT (min)	Component name	%
91	43.87	CAMPHOLENOL	0.02
92	44.20	NEROL	0.11
93	44.46	cis-EPOXYLINALYL ACETATE	0.03
94	44.71	trans-EPOXYLINALYL ACETATE	0.03
95	45.38	CALAMENENE	0.02
96	45.58	trans-CARVEOL	0.01
97	45.72	m-CYMENE-8-OL	0.02
98	45.91	p-CYMENE-8-OL	0.05
99	46.02	GERANIOL	0.28
100	49.22	LAVANDULYL ESTER	0.03
101	49.66	3,7-OCTADIENE-2,6-DIOL, 2,6-DIMETHYL-	0.03
102	50.19	ISOCARYOPHYLLENE OXIDE	0.02
103	50.41	CARYOPHYLLENE OXIDE	0.12
104	52.42	Epi-CUBENOL	0.02
105	55.11	T-CADINOL	0.16
106	56.11	alpha-BISABOOL	0.34
107	61.57	COUMARIN	0.14
		<b>TOTAL</b>	<b>99.97</b>

**Disclaimer & Caution**

Please refer to all relevant technical information specific to the product, prior to use, The information contained in this document is obtained from current and reliable sources, New Directions Aromatics Inc, provides the information contained herein, but makes no representation as to its comprehensiveness or accuracy, Individuals receiving this information must exercise their independent judgment in determining its appropriateness for a particular purpose, The user of the product is solely responsible for compliance with all laws and regulations applying to the use of the products, including intellectual property rights of third parties, As the ordinary or otherwise use(s) of this product is outside the control of New Directions Aromatics Inc,, no representation or warranty, expressed or implied, is made as to the effect(s) of such use(s), (including damage or injury), or the results obtained, The liability of New Directions Aromatics Inc, is limited to the value of the goods and does not include any consequential loss, New Directions Aromatics Inc, shall not be liable for any errors or delays in the content, or for any actions taken in reliance thereon, New Directions Aromatics Inc, shall not be responsible for any damages resulting from use of or reliance upon this information, In the event of any dispute, the Customer hereby agrees that Jurisdiction is limited to the province of Ontario, Canada