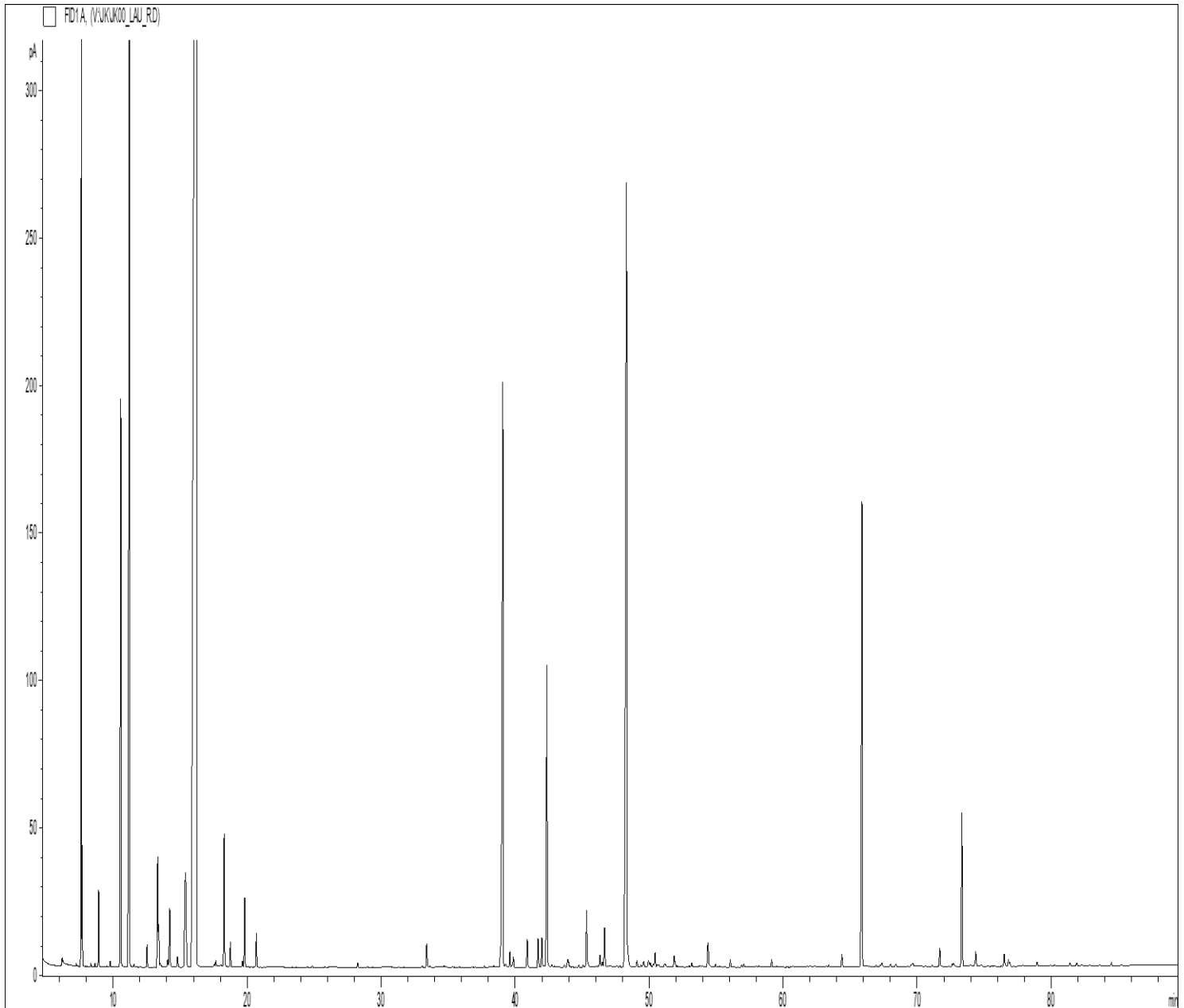


GCMS ANALYSIS

PRODUCT NAME: LAUREL LEAF ESSENTIAL OIL – 11076

DATE: April 21, 2023



*Due to volume turnover, this report is not lot specific, It is representative of the quality of this oil produced by the manufacturer of this product, Specific lots may vary slightly as is the case in natural products,*

GCMS ANALYSIS (cont'd.)

PRODUCT NAME: LAUREL LEAF ESSENTIAL OIL – 11076

PEAK	RT (MIN)	COMPOUND	%
1	7,25	TRICYCLENE	0,02
2	<b>7,62</b>	<b>alpha-PINENE</b>	<b>5,06</b>
3	7,69	alpha-THUYENE	0,54
4	8,33	ETHYL 2-METHYLBUTYRATE	0,02
5	8,64	alpha-FENCHENE	0,02
6	8,92	CAMPHENE	0,47
7	9,77	BUTYL ISOBUTYRATE	0,04
8	<b>10,57</b>	<b>beta-PINENE</b>	<b>4,18</b>
9	<b>11,21</b>	<b>SABINENE</b>	<b>7,93</b>
10	11,56	THUYA-2,4-DIENE	0,02
11	12,53	delta3-CARENE	0,18
12	13,32	beta-MYRCENE	0,87
13	13,40	alpha-PHELLANDRENE	0,26
14	13,52	psi-LIMONENE	0,02
15	14,07	ISOBUTYL 2-METHYLBUTYRATE	0,06
16	14,22	alpha-TERPINENE	0,51
17	14,81	1,8-CINEOLE, 2,3-DEHYDRO	0,10
18	15,40	LIMONENE	1,51
19	<b>16,21</b>	<b>1,8-CINEOLE</b>	<b>43,59</b>
20	16,38	ALIPHATIC ESTER	0,03
21	17,56	ALIPHATIC ESTER	0,03
22	17,66	cis-beta-OCIMENE	0,05
23	18,03	TERPENIC COMPOUND	0,02
24	18,28	gamma-TERPINENE	0,98
25	18,75	trans-beta-OCIMENE	0,18
26	19,64	m-CYMENE	0,05
27	19,81	p-CYMENE	0,52
28	20,69	TERPINOLENE	0,27
29	24,87	KETON COMPOUND	0,02
30	28,25	2-NONANONE	0,04

**Disclaimer & Caution:**

Please refer to all relevant technical information specific to the product, prior to use, The information contained in this document is obtained from current and reliable sources, New Directions Aromatics Inc, provides the information contained herein, but makes no representation as to its comprehensiveness or accuracy, Individuals receiving this information must exercise their independent judgment in determining its appropriateness for a particular purpose, The user of the product is solely responsible for compliance with all laws and regulations applying to the use of the products, including intellectual property rights of third parties, As the ordinary or otherwise use(s) of this product is outside the control of New Directions Aromatics Inc., no representation or warranty, expressed or implied, is made as to the effect(s) of such use(s), (including damage or injury), or the results obtained, The liability of New Directions Aromatics Inc, is limited to the value of the goods and does not include any consequential loss, New Directions Aromatics Inc, shall not be liable for any errors or delays in the content, or for any actions taken in reliance thereon, New Directions Aromatics Inc, shall not be responsible for any damages resulting from use of or reliance upon this information, In the event of any dispute, the Customer hereby agrees that Jurisdiction is limited to the province of Ontario, Canada,

GCMS ANALYSIS (cont'd.)

PRODUCT NAME: LAUREL LEAF ESSENTIAL OIL – 11076

PEAK	RT (MIN)	COMPOUND	%
31	28,98	TRICYCLO UNDECANOL Mw=166	0,01
32	33,08	alpha-CUBEBENE	0,02
33	33,40	trans-THUYANOL	0,21
34	34,70	YLANGENE	0,02
35	35,34	alpha-COPAENE	0,01
36	37,71	alpha-GURJUNENE	0,01
37	38,42	beta1-CUBEBENE	0,04
38	38,94	cis-THUYANOL	0,17
39	<b>39,09</b>	<b>LINALOOL</b>	<b>6,01</b>
40	39,30	2-DECANONE	0,04
41	39,62	LINALYL ACETATE	0,12
42	39,87	trans-p-MENTH-2-EN-1-OL	0,10
43	40,91	BORNYL ACETATE	0,24
44	41,72	beta-ELEMENE	0,26
45	42,00	beta-CARYOPHYLLENE	0,26
46	42,13	alpha-GUAIENE	0,02
47	<b>42,38</b>	<b>TERPINENE-4-OL</b>	<b>2,77</b>
48	42,75	2-UNDECANONE	0,02
49	43,69	SESQUITERPENE	0,03
50	43,94	4-THUYEN-2-alpha-YL ACETATE	0,06
51	43,96	cis-p-MENTH-2-EN-1-OL	0,06
52	44,11	CADINA-3,5-DIENE	0,01
53	44,76	SESQUITERPENE	0,03
54	45,06	ALLO-AROMADENDRENE	0,03
55	45,34	delta-TERPENYL ACETATE	0,50
56	45,41	trans-SABINYL ACETATE	0,05
57	46,34	ESTRAGOL	0,11
58	46,51	alpha-HUMULENE	0,05
59	46,68	delta-TERPINEOL	0,36
60	47,14	SESQUITERPENE	0,02

**Disclaimer & Caution:**

Please refer to all relevant technical information specific to the product, prior to use, The information contained in this document is obtained from current and reliable sources, New Directions Aromatics Inc, provides the information contained herein, but makes no representation as to its comprehensiveness or accuracy, Individuals receiving this information must exercise their independent judgment in determining its appropriateness for a particular purpose, The user of the product is solely responsible for compliance with all laws and regulations applying to the use of the products, including intellectual property rights of third parties, As the ordinary or otherwise use(s) of this product is outside the control of New Directions Aromatics Inc., no representation or warranty, expressed or implied, is made as to the effect(s) of such use(s), (including damage or injury), or the results obtained, The liability of New Directions Aromatics Inc, is limited to the value of the goods and does not include any consequential loss, New Directions Aromatics Inc, shall not be liable for any errors or delays in the content, or for any actions taken in reliance thereon, New Directions Aromatics Inc, shall not be responsible for any damages resulting from use of or reliance upon this information, In the event of any dispute, the Customer hereby agrees that Jurisdiction is limited to the province of Ontario, Canada,

GCMS ANALYSIS (cont'd.)

PRODUCT NAME: LAUREL LEAF ESSENTIAL OIL – 11076

PEAK	RT (MIN)	COMPOUND	%
61	47,59	cis-PIPERITOL	0,02
62	47,82	gamma-MUUROLENE	0,02
63	<b>48,31</b>	<b>TERPENYL ACETATE</b>	<b>9,64</b>
64	48,35	alpha-TERPINEOL	2,06
65	48,42	BORNEOL	0,15
66	49,10	GERMACRENE D	0,06
67	49,40	SESQUITERPENE	0,02
68	49,61	beta-SELINENE	0,07
69	49,96	alpha-SELINENE	0,08
70	50,11	alpha-MUUROLENE	0,03
71	50,32	MENTHADIENOL ISOMERE	0,02
72	50,45	BICYCLOGERMACRENE	0,12
73	50,63	SESQUITERPENE	0,04
74	51,16	SESQUITERPENE	0,03
75	51,19	trans-PIPERITOL	0,03
76	51,87	delta-CADINENE	0,11
77	51,94	gamma-CADINENE	0,04
78	52,10	GERANYL ACETATE	0,02
79	53,01	alpha-BISABOLENE	0,02
80	53,18	trans-p-MENTHA-1,2-DIEN-8-OL	0,04
81	53,78	MYRTENOL	0,02
82	53,95	CAMPHOLENOL	0,01
83	54,40	NEROL	0,27
84	54,96	SESQUITERPENE Mw=202	0,03
85	55,25	2-TRIDECANONE	0,01
86	56,06	9-DECEN-1-YL,ACETATE	0,06
87	56,91	p-CYMENE-8-OL	0,02
88	57,09	GERANIOL	0,04
89	58,01	PHENYLMETHYL ESTER	0,02
90	58,21	COMPOUND Mw=220	0,02

**Disclaimer & Caution:**

Please refer to all relevant technical information specific to the product, prior to use, The information contained in this document is obtained from current and reliable sources, New Directions Aromatics Inc, provides the information contained herein, but makes no representation as to its comprehensiveness or accuracy, Individuals receiving this information must exercise their independent judgment in determining its appropriateness for a particular purpose, The user of the product is solely responsible for compliance with all laws and regulations applying to the use of the products, including intellectual property rights of third parties, As the ordinary or otherwise use(s) of this product is outside the control of New Directions Aromatics Inc., no representation or warranty, expressed or implied, is made as to the effect(s) of such use(s), (including damage or injury), or the results obtained, The liability of New Directions Aromatics Inc, is limited to the value of the goods and does not include any consequential loss, New Directions Aromatics Inc, shall not be liable for any errors or delays in the content, or for any actions taken in reliance thereon, New Directions Aromatics Inc, shall not be responsible for any damages resulting from use of or reliance upon this information, In the event of any dispute, the Customer hereby agrees that Jurisdiction is limited to the province of Ontario, Canada,

GCMS ANALYSIS (cont'd,)

PRODUCT NAME: LAUREL LEAF ESSENTIAL OIL – 11076

PEAK	RT (MIN)	COMPOUND	%
91	59,15	ALIPHATIC ESTER	0,07
92	59,52	epi-CUBEBOL	0,01
93	60,73	alpha-CALACORENE	0,02
94	62,01	BENZENE PROPANOL ACETATE	0,04
95	62,35	CUBEBOL	0,04
96	63,24	AROMATIC COMPOUND	0,01
97	63,40	SESQUITERPENOL	0,02
98	64,40	CARYOPHYLLENE OXIDE	0,13
99	65,90	<b>METHYLEUGENOL</b>	<b>4,65</b>
100	66,95	LEDOL	0,03
101	67,23	EPOXY-6,7-HUMULENE	0,02
102	67,37	PROPANOL, 3-PHENYL-	0,06
103	68,03	JUNEOL	0,03
104	68,42	Epi-CUBENOL	0,04
105	69,55	SESQUITERPENOL	0,02
106	69,62	SESQUITERPENOL	0,02
107	69,71	VIRIDIFLOROL	0,04
108	70,10	CUMINOL	0,01
109	70,23	10-epi-gamma-EUDESMOL	0,01
110	71,13	SESQUITERPENOL	0,02
111	71,70	SPATHULENOL	0,19
112	72,62	SESQUITERPNOL	0,03
113	72,73	CINNAMYL ACETATE	0,05
114	73,35	EUGENOL	1,41
115	74,00	AGAROSPIROL	0,02
116	74,38	METHYLISOEUGENOL	0,16
117	74,80	alpha-MUUROLOL	0,03
118	76,51	ELEMICIN	0,13
119	76,59	alpha-EUDESMOL	0,01
120	76,82	beta-EUDESMOL	0,06

**Disclaimer & Caution:**

Please refer to all relevant technical information specific to the product, prior to use, The information contained in this document is obtained from current and reliable sources, New Directions Aromatics Inc, provides the information contained herein, but makes no representation as to its comprehensiveness or accuracy, Individuals receiving this information must exercise their independent judgment in determining its appropriateness for a particular purpose, The user of the product is solely responsible for compliance with all laws and regulations applying to the use of the products, including intellectual property rights of third parties, As the ordinary or otherwise use(s) of this product is outside the control of New Directions Aromatics Inc., no representation or warranty, expressed or implied, is made as to the effect(s) of such use(s), (including damage or injury), or the results obtained, The liability of New Directions Aromatics Inc, is limited to the value of the goods and does not include any consequential loss, New Directions Aromatics Inc, shall not be liable for any errors or delays in the content, or for any actions taken in reliance thereon, New Directions Aromatics Inc, shall not be responsible for any damages resulting from use of or reliance upon this information, In the event of any dispute, the Customer hereby agrees that Jurisdiction is limited to the province of Ontario, Canada,

GCMS ANALYSIS (cont'd,)

PRODUCT NAME: LAUREL LEAF ESSENTIAL OIL – 11076

PEAK	RT (MIN)	COMPOUND	%
121	76,92	alpha-CADINOL	0,04
122	77,89	EUDESMA-7-EN-4-OL	0,01
123	78,96	CINNAMIC ALCOHOL	0,04
124	79,94	CARYOPHYLLA-2,6-DIEN-5-alpha-OL	0,02
125	80,29	TERPENIC COMPOUND	0,02
126	80,48	AROMATIC COMPOUND	0,02
127	81,42	SESQUITERPENIC OXIDE	0,04
128	81,92	CHAVICOL	0,04
129	82,27	ISOEUGENOL	0,02
130	83,62	SESQUITERPENIC OXIDE	0,01
131	84,51	trans-ELEMICIN	0,03
132	85,25	SESQUITERPENIC OXIDE	0,01
		<b>TOTAL</b>	<b>99,93</b>

**Disclaimer & Caution:**

Please refer to all relevant technical information specific to the product, prior to use, The information contained in this document is obtained from current and reliable sources, New Directions Aromatics Inc, provides the information contained herein, but makes no representation as to its comprehensiveness or accuracy, Individuals receiving this information must exercise their independent judgment in determining its appropriateness for a particular purpose, The user of the product is solely responsible for compliance with all laws and regulations applying to the use of the products, including intellectual property rights of third parties, As the ordinary or otherwise use(s) of this product is outside the control of New Directions Aromatics Inc., no representation or warranty, expressed or implied, is made as to the effect(s) of such use(s), (including damage or injury), or the results obtained, The liability of New Directions Aromatics Inc, is limited to the value of the goods and does not include any consequential loss, New Directions Aromatics Inc, shall not be liable for any errors or delays in the content, or for any actions taken in reliance thereon, New Directions Aromatics Inc, shall not be responsible for any damages resulting from use of or reliance upon this information, In the event of any dispute, the Customer hereby agrees that Jurisdiction is limited to the province of Ontario, Canada,