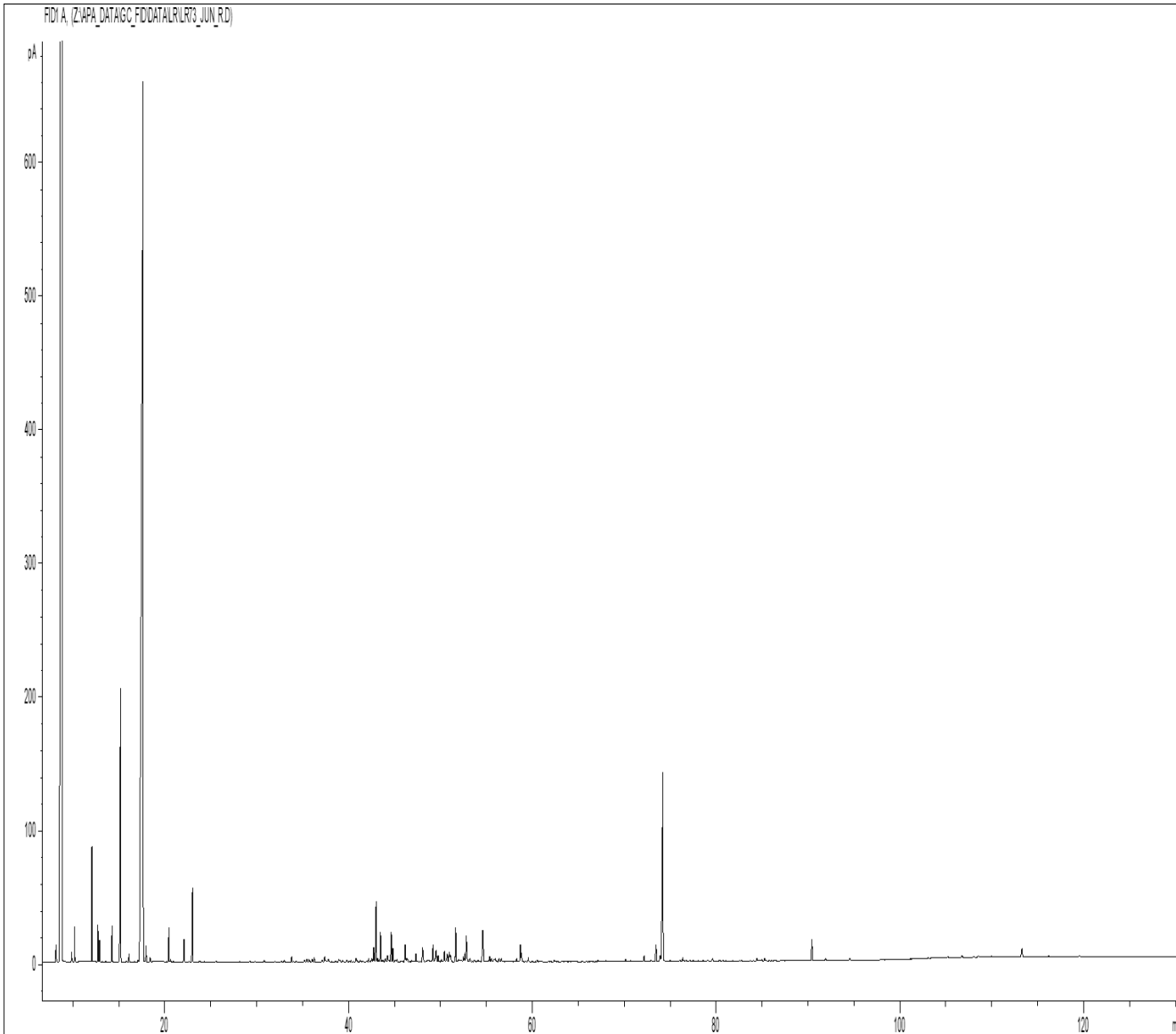


GCMS ANALYSIS

**PRODUCT NAME: JUNIPER BERRY ESSENTIAL OIL (INDIA)**

**DATE: May 22, 2024**



**Disclaimer & Caution:**

Please refer to all relevant technical information specific to the product, prior to use. The information contained in this document is obtained from current and reliable sources, New Directions Aromatics Inc, provides the information contained herein, but makes no representation as to its comprehensiveness or accuracy. Individuals receiving this information must exercise their independent judgment in determining its appropriateness for a particular purpose. The user of the product is solely responsible for compliance with all laws and regulations applying to the use of the products, including intellectual property rights of third parties. As the ordinary or otherwise use(s) of this product is outside the control of New Directions Aromatics Inc., no representation or warranty, expressed or implied, is made as to the effect(s) of such use(s), (including damage or injury), or the results obtained. The liability of New Directions Aromatics Inc, is limited to the value of the goods and does not include any consequential loss. New Directions Aromatics Inc, shall not be liable for any errors or delays in the content, or for any actions taken in reliance thereon, New Directions Aromatics Inc, shall not be responsible for any damages resulting from use of or reliance upon this information, In the event of any dispute, the Customer hereby agrees that Jurisdiction is limited to the province of Ontario, Canada

GCMS ANALYSIS (cont'd.)

PRODUCT NAME: JUNIPER BERRY ESSENTIAL OIL (INDIA)

Peak	RT (min)	Compound name	%
1	8,17	TRICYCLEN	8,17
2	8,83	alpha-PINENE	8,83
3	8,84	alpha-THUYENE	8,84
4	9,85	alpha-FENCHENE	9,85
5	10,18	CAMPHE	10,18
6	12,05	beta-PINENE	12,05
7	12,71	SABINENE	12,71
8	12,88	PINADIENE	12,88
9	14,25	delta3-CARENE	14,25
10	15,18	beta-MYRCENE	15,18
11	15,24	alpha-PHELLANDRENE	15,24
12	16,09	alpha-TERPINENE	16,09
13	17,08	MENTHATRIENE ISOMER	17,08
14	17,63	LIMONENE	17,63
15	17,95	beta-PHELLANDRENE	17,95
16	18,39	1,3,8-p-MENTHATRIENE	18,39
17	20,43	gamma-TERPINENE	20,43
18	20,60	MENTHATRIENE ISOMER	20,60
19	22,07	p-CYMENE	22,07
20	23,01	TERPINOLENE	23,01
21	29,24	alpha-PINENE OXIDE	29,24
22	30,81	COSMENE	30,81
23	32,98	PERILLENE	32,98
24	33,80	alpha,p-DIMETHYLSTYRENE	33,80
25	35,19	LIMONENE cis-1,2-EPOXIDE	35,19
26	35,45	alpha-CUBEBENE	35,45
27	35,69	4,8-TERPINOLENE EPOXIDE	35,69
28	36,03	trans-THUYANOL	36,03
29	36,04	FENCHYL ACETATE	36,04
30	36,26	delta-ELEMENE	36,26

**Disclaimer & Caution:**

Please refer to all relevant technical information specific to the product, prior to use. The information contained in this document is obtained from current and reliable sources, New Directions Aromatics Inc, provides the information contained herein, but makes no representation as to its comprehensiveness or accuracy. Individuals receiving this information must exercise their independent judgment in determining its appropriateness for a particular purpose. The user of the product is solely responsible for compliance with all laws and regulations applying to the use of the products, including intellectual property rights of third parties. As the ordinary or otherwise use(s) of this product is outside the control of New Directions Aromatics Inc., no representation or warranty, expressed or implied, is made as to the effect(s) of such use(s), (including damage or injury), or the results obtained. The liability of New Directions Aromatics Inc, is limited to the value of the goods and does not include any consequential loss. New Directions Aromatics Inc, shall not be liable for any errors or delays in the content, or for any actions taken in reliance thereon. New Directions Aromatics Inc, shall not be responsible for any damages resulting from use of or reliance upon this information. In the event of any dispute, the Customer hereby agrees that Jurisdiction is limited to the province of Ontario, Canada

GCMS ANALYSIS (cont'd.)

PRODUCT NAME: JUNIPER BERRY ESSENTIAL OIL (INDIA)

Peak	RT (min)	Compound name	%
31	37,13	beta-PATCHOULENE	0,02
32	37,39	alpha-CAMPHOLENAL	0,08
33	37,77	alpha-COPAENE	0,03
34	38,92	CAMPHOR	0,03
35	39,03	PINOCAMPHONE	0,02
36	39,32	alpha-GURJUNENE	0,01
37	39,78	beta1-CUBEBENE	0,02
38	40,23	COMPOUND Mw=152	0,01
39	40,81	SESQUITERPENE	0,05
40	41,26	cis-THUYANOL	0,02
41	41,49	SESQUITERPENE	0,02
42	41,96	LIMONENE trans-8,9-EPOXIDE	0,01
43	42,17	SESQUITERPENE	0,04
44	42,44	SESQUITERPENE	0,01
45	42,54	METHYL CITRONELLATE	0,04
46	42,73	alpha-CEDRENE	0,19
47	42,99	CEDRENE ISOMER	0,72
48	43,16	CEDRENE ISOMER	0,04
49	43,47	BORNYL ACETATE	0,33
50	43,65	SESQUITERPENE	0,02
51	43,76	ISOBORNYL ACETATE	0,01
52	44,00	SESQUITERPENE	0,05
53	44,24	beta-ELEMENE	0,09
54	44,42	SESQUITERPENE	0,02
55	44,63	beta-CARYOPHYLLENE	0,33
56		beta-CEDRENE	
57	44,82	TERPINENE-4-OL	0,15
58	45,09	SESQUITERPENE	0,04
59	45,26	SESQUITERPENE	0,03
60	46,15	THUYOPSENE	0,20

**Disclaimer & Caution:**

Please refer to all relevant technical information specific to the product, prior to use. The information contained in this document is obtained from current and reliable sources, New Directions Aromatics Inc, provides the information contained herein, but makes no representation as to its comprehensiveness or accuracy. Individuals receiving this information must exercise their independent judgment in determining its appropriateness for a particular purpose. The user of the product is solely responsible for compliance with all laws and regulations applying to the use of the products, including intellectual property rights of third parties. As the ordinary or otherwise use(s) of this product is outside the control of New Directions Aromatics Inc., no representation or warranty, expressed or implied, is made as to the effect(s) of such use(s), (including damage or injury), or the results obtained. The liability of New Directions Aromatics Inc, is limited to the value of the goods and does not include any consequential loss. New Directions Aromatics Inc, shall not be liable for any errors or delays in the content, or for any actions taken in reliance thereon. New Directions Aromatics Inc, shall not be responsible for any damages resulting from use of or reliance upon this information. In the event of any dispute, the Customer hereby agrees that Jurisdiction is limited to the province of Ontario, Canada

GCMS ANALYSIS (cont'd.)

PRODUCT NAME: JUNIPER BERRY ESSENTIAL OIL (INDIA)

Peak	RT (min)	Compound name	%
61	46,32	MYRTENAL	0,04
62	46,40	cis-p-MENTHA-2,8-DIEN-1-OL	0,02
63	46,88	CADINA-3,5-DIENE	0,02
64	47,06	SESQUITERPENE	0,01
65	47,32	GERMACRENE A	0,09
66	48,04	trans-PINOCARVEOL	0,19
67	48,60	SESQUITERPENE	0,02
68	48,66	SESQUITERPENE	0,03
69	49,18	alpha-HUMULENE	0,10
70	49,19	E-beta-FARNESENE	0,09
71	49,51	cis-4,5-MUUROLADIENE	0,20
72		trans-VERBENOL	
73	49,76	CURCUMENE ISOMER	0,07
74	50,10	LAVANDULAL	0,03
75	50,43	gamma-MUUROLENE	0,12
76	50,73	SESQUITERPENE	0,14
77		gamma-CURCUMENE	
78	50,94	alpha-TERPINEOL	0,05
79	50,95	VERBENONE	0,06
80	51,05	BORNEOL	0,13
81	51,66	GERMACRENE D	0,39
82	51,96	SESQUITERPENE	0,03
83	52,06	SESQUITERPENE	0,02
84	52,13	EREMOPHILENE	0,01
85	52,22	beta-HIMACHALENE	0,02
86	52,32	alpha-SELINENE	0,01
87	52,48	SESQUITERPENE	0,06
88	52,64	beta-BISABOLENE	0,08
89	52,81	SESQUITERPENE	0,33
90	53,21	HIMACHALENE ISOMER	0,05

**Disclaimer & Caution:**

Please refer to all relevant technical information specific to the product, prior to use. The information contained in this document is obtained from current and reliable sources, New Directions Aromatics Inc, provides the information contained herein, but makes no representation as to its comprehensiveness or accuracy. Individuals receiving this information must exercise their independent judgment in determining its appropriateness for a particular purpose. The user of the product is solely responsible for compliance with all laws and regulations applying to the use of the products, including intellectual property rights of third parties. As the ordinary or otherwise use(s) of this product is outside the control of New Directions Aromatics Inc., no representation or warranty, expressed or implied, is made as to the effect(s) of such use(s), (including damage or injury), or the results obtained. The liability of New Directions Aromatics Inc, is limited to the value of the goods and does not include any consequential loss. New Directions Aromatics Inc, shall not be liable for any errors or delays in the content, or for any actions taken in reliance thereon. New Directions Aromatics Inc, shall not be responsible for any damages resulting from use of or reliance upon this information. In the event of any dispute, the Customer hereby agrees that Jurisdiction is limited to the province of Ontario, Canada

GCMS ANALYSIS (cont'd.)

PRODUCT NAME: JUNIPER BERRY ESSENTIAL OIL (INDIA)

Peak	RT (min)	Compound name	%
91	53,64	beta-CURCUMENE	53,64
92	54,07	trans-ISOPIPERITENOL	54,07
93	54,59	delta-CADINENE	54,59
94	54,60	gamma-CADINENE	54,60
95	55,33	delta-SELINENE	55,33
96	55,35	beta-SESQUIPELLANDRENE	55,35
97	55,54	alpha-CURCUMENE	55,54
98	55,83	SELINA-3,7-DIENE	55,83
99	55,94	SESQUITERPENE	55,94
100	56,03	CADINA-1,4-DIENE	56,03
101	56,34	MYRTENOL	56,34
102	56,62	alpha-AMORPHENE	56,62
103	58,29	CUPARENE	58,29
104	58,69	GERMACRENE B	58,69
105	58,81	trans-CARVEOL	58,81
106	59,56	p-CYMENE-8-OL	59,56
107	60,52	cis-CARVEOL	60,52
108	62,38	SESQUITERPENIC COMPOUND	62,38
109	67,14	HUMULENE EPOXIDE	67,14
110	68,00	OXIDE COMPOUND	68,00
111	70,14	EPOXY-6,7-HUMULENE	70,14
112	70,66	NEROLIDOL	70,66
113	72,16	ELEMOL	72,16
114	72,91	CEDROL ISOMER	72,91
115	73,45	AROMATIC COMPOUND Mw=222	73,45
116	73,91	SESQUITERPENOL	73,91
117	74,19	CEDROL	74,19
118	74,98	CEDROL ISOMER	74,98
119	76,04	CEDROL ISOMER	76,04
120	76,34	CEDROL ISOMER	76,34

**Disclaimer & Caution:**

Please refer to all relevant technical information specific to the product, prior to use. The information contained in this document is obtained from current and reliable sources, New Directions Aromatics Inc, provides the information contained herein, but makes no representation as to its comprehensiveness or accuracy. Individuals receiving this information must exercise their independent judgment in determining its appropriateness for a particular purpose. The user of the product is solely responsible for compliance with all laws and regulations applying to the use of the products, including intellectual property rights of third parties. As the ordinary or otherwise use(s) of this product is outside the control of New Directions Aromatics Inc., no representation or warranty, expressed or implied, is made as to the effect(s) of such use(s), (including damage or injury), or the results obtained. The liability of New Directions Aromatics Inc, is limited to the value of the goods and does not include any consequential loss. New Directions Aromatics Inc, shall not be liable for any errors or delays in the content, or for any actions taken in reliance thereon. New Directions Aromatics Inc, shall not be responsible for any damages resulting from use of or reliance upon this information. In the event of any dispute, the Customer hereby agrees that Jurisdiction is limited to the province of Ontario, Canada

GCMS ANALYSIS (cont'd.)

PRODUCT NAME: JUNIPER BERRY ESSENTIAL OIL (INDIA)

Peak	RT (min)	Compound name	%
121	76,46	SESQUITERPENIC COMPOUND	0,01
122	76,70	SESQUITERPENIC COMPOUND	0,02
123	77,13	T-CADINOL	0,02
124	77,48	alpha-MUUROLOL	0,02
125	78,60	SESQUITERPENIC COMPOUND	0,02
126	79,13	GERANYLGERANIADIENE	0,02
127	79,56	alpha-CADINOL	0,02
128	79,63	alpha-EUDESMOL	0,03
129	80,35	DITERPENE	0,01
130	80,40	CITRONELIC ACID	0,02
131	80,73	DITERPENE	0,02
132	82,54	SESQUITERPENIC COMPOUND	0,01
133	82,74	SESQUITERPENIC COMPOUND	0,02
134	84,44	SANDARACOPIMARADIENE	0,04
135	84,98	DITERPENE	0,02
136	85,26	MANOYL OXIDE	0,04
137	85,78	SESQUITERPENIC COMPOUND	0,01
138	86,43	DITERPENE	0,01
139	88,19	19-NORABIETA-8,11,13-TRIENE	0,01
140	90,41	BIFORMENE	0,27
141	91,92	ABIETATRIENE	0,03
142	94,54	DITERPENE	0,03
143	103,08	PIMARINAL	0,01
144	105,20	DITERPENIC COMPOUND Mw=286	0,01
145	106,75	DITERPENIC COMPOUND Mw=286	0,03
146	108,53	DITERPENIC COMPOUND Mw=286	0,02
147	113,28	DITERPENIC COMPOUND Mw=286	0,15
148	116,19	AROMATIC COMPOUND Mw=222	0,01
149	119,53	AROMATIC COMPOUND Mw=222	0,02
		<b>TOTAL</b>	<b>99,97</b>

**Disclaimer & Caution:**

Please refer to all relevant technical information specific to the product, prior to use. The information contained in this document is obtained from current and reliable sources, New Directions Aromatics Inc, provides the information contained herein, but makes no representation as to its comprehensiveness or accuracy. Individuals receiving this information must exercise their independent judgment in determining its appropriateness for a particular purpose. The user of the product is solely responsible for compliance with all laws and regulations applying to the use of the products, including intellectual property rights of third parties. As the ordinary or otherwise use(s) of this product is outside the control of New Directions Aromatics Inc., no representation or warranty, expressed or implied, is made as to the effect(s) of such use(s), (including damage or injury), or the results obtained. The liability of New Directions Aromatics Inc, is limited to the value of the goods and does not include any consequential loss. New Directions Aromatics Inc, shall not be liable for any errors or delays in the content, or for any actions taken in reliance thereon, New Directions Aromatics Inc, shall not be responsible for any damages resulting from use of or reliance upon this information. In the event of any dispute, the Customer hereby agrees that Jurisdiction is limited to the province of Ontario, Canada