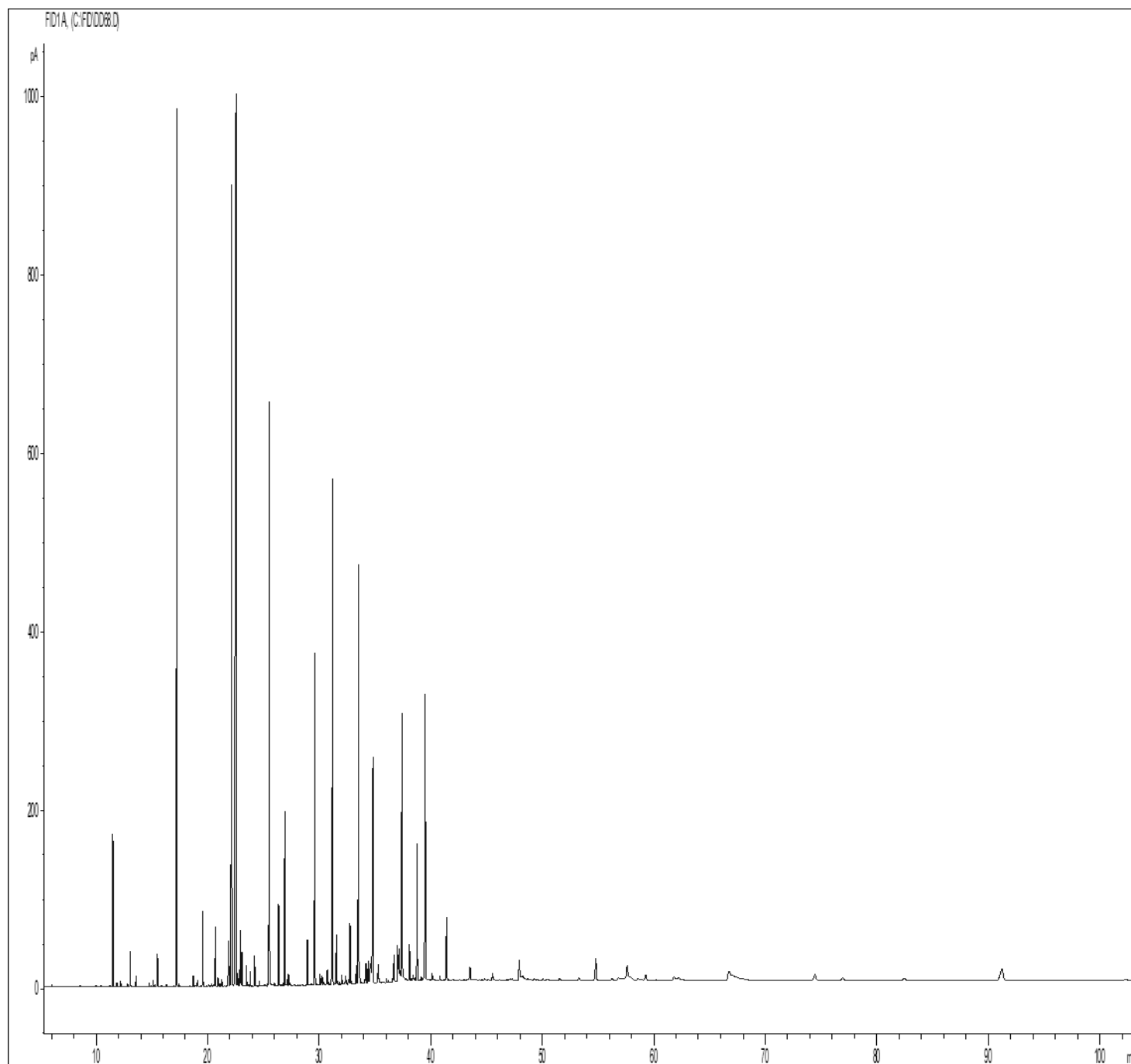


GCMS ANALYSIS

PRODUCT NAME: JASMINE SAMBAC ABSOLUTE - 12005

DATE: November 20, 2020



Due to volume turnover, this report is not lot specific, It is representative of the quality of this oil produced by the manufacturer of this product, Specific lots may vary slightly as is the case in natural products,

GCMS ANALYSIS (cont'd.)

PRODUCT NAME: JASMINE SAMBAC ABSOLUTE - 12005

Peak	RT (min)	Compound name	%
1	11,49	3-HEXEN-1-OL ACETATE	1,24
2	11,86	2-HEXEN-1-OL ACETATE	0,03
3	12,19	1-HEXANOL	0,04
4	12,82	2-PENTANONE, 4-HYDROXY-4-METHYL-	0,02
5	13,06	3-HEXEN-1-OL	0,30
6	13,56	2-HEXEN-1-OL	0,09
7	14,76	LINALOOL Cis-OXIDE	0,03
8	15,12	cis-3-HEXENYL BUTYRATE	0,05
9	15,29	alpha-CUBEBENE	0,02
10	15,50	LINALOOL trans-OXIDE	0,29
11	16,30	alpha-COPAENE	0,02
12	17,25	LINALOOL	11,00
13	17,44	beta1-CUBEBENE	0,03
14	18,71	beta-ELEMENE	0,10
15	19,09	beta-CARYOPHYLLENE	0,06
16	19,56	METHYL BENZOATE	0,73
17	20,34	ETHYL BENZOATE	0,03
18	20,70	ALIPHATIC ESTER	0,61
19	20,92	alpha-HUMULENE	0,10
20	21,10	cis-4,5-MUUROLADIENE	0,03
21	21,26	gamma-MUUROLENE	0,08
22	21,79	Z,E-alpha-FARNESENE	0,09
23	21,85	alpha-MUUROLENE	0,13
24	21,88	GERMACRENE D	0,45
25	22,15	BENZYL ACETATE	9,90
26	22,27	MUUROLADIENE ISOMER	0,02
27	22,53	E,E-alpha-FARNESENE	17,99
28	22,61	alpha-SELINENE	0,06
29	22,69	BICYCLOGERMACRENE	0,11
30	22,92	delta-CADINENE	0,69

Disclaimer & Caution:

Please refer to all relevant technical information specific to the product, prior to use. The information contained in this document is obtained from current and reliable sources. New Directions Aromatics Inc. provides the information contained herein, but makes no representation as to its comprehensiveness or accuracy. Individuals receiving this information must exercise their independent judgment in determining its appropriateness for a particular purpose. The user of the product is solely responsible for compliance with all laws and regulations applying to the use of the products, including intellectual property rights of third parties. As the ordinary or otherwise use(s) of this product is outside the control of New Directions Aromatics Inc., no representation or warranty, expressed or implied, is made as to the effect(s) of such use(s), (including damage or injury), or the results obtained. The liability of New Directions Aromatics Inc. is limited to the value of the goods and does not include any consequential loss. New Directions Aromatics Inc. shall not be liable for any errors or delays in the content, or for any actions taken in reliance thereon. New Directions Aromatics Inc. shall not be responsible for any damages resulting from use of or reliance upon this information. In the event of any dispute, the Customer hereby agrees that Jurisdiction is limited to the province of Ontario.

GCMS ANALYSIS (cont'd.)

PRODUCT NAME: JASMINE SAMBAC ABSOLUTE - 12005

Peak	RT (min)	Compound name	%
31	23,06	gamma-CADINENE	0,39
32	23,47	METHYL SALICYLATE	0,22
33	23,62	CADINA-1,4-DIENE	0,02
34	23,81	alpha-AMORPHENE	0,14
35	24,20	2-PHENYLETHYL ACETATE	0,30
36	24,62	ETHYL SALICYLATE	0,05
37	25,39	GERANIOL	0,04
38	25,51	BENZYL ALCOHOL	6,58
39	25,60	SESQUITERPENOL	0,06
40	25,81	SESQUITERPENOL	0,02
41	25,94	SESQUIROSEFURAN	0,03
42	26,35	PHENYLETHYL ALCOHOL	0,90
43	26,74	AROMATIC COMPOUND	0,03
44	26,91	PHENYLACETONITRILE	1,86
45	27,12	ALIPHATIC ESTER	0,07
46	27,24	SESQUITERPENIC COMPOUND Mw=250	0,11
47	27,32	cis-JASMONE	0,04
48	27,40	TERPENIC ESTER	0,04
49	28,94	NEROLIDOL	0,45
50	29,61	GERMACRENE D-4-OL	4,03
51	30,08	HEXYL BENZOATE	0,12
52	30,19	SESQUITERPENOL	0,06
53	30,27	METHYL CINNAMATE	0,09
54	30,42	SESQUITERPENIQUE EPOXIDE	0,03
55	30,69	trans-3-HEXENYL BENZOATE	0,16
56	30,78	2-PHENYLETHYL METHYLVALERATE	0,15
57	31,05	BENZYL TIGLATE	0,02
58	31,11	HENEICOSANE	0,09
59	31,21	cis-3-HEXENYL BENZOATE	6,71
60	31,48	HENEICOSENE ISOMER	0,03

Disclaimer & Caution:

Please refer to all relevant technical information specific to the product, prior to use, The information contained in this document is obtained from current and reliable sources, New Directions Aromatics Inc, provides the information contained herein, but makes no representation as to its comprehensiveness or accuracy, Individuals receiving this information must exercise their independent judgment in determining its appropriateness for a particular purpose, The user of the product is solely responsible for compliance with all laws and regulations applying to the use of the products, including intellectual property rights of third parties, As the ordinary or otherwise use(s) of this product is outside the control of New Directions Aromatics Inc., no representation or warranty, expressed or implied, is made as to the effect(s) of such use(s), (including damage or injury), or the results obtained, The liability of New Directions Aromatics Inc, is limited to the value of the goods and does not include any consequential loss, New Directions Aromatics Inc, shall not be liable for any errors or delays in the content, or for any actions taken in reliance thereon, New Directions Aromatics Inc, shall not be responsible for any damages resulting from use of or reliance upon this information, In the event of any dispute, the Customer hereby agrees that Jurisdiction is limited to the province of Ontario,

GCMS ANALYSIS (cont'd.)

PRODUCT NAME: JASMINE SAMBAC ABSOLUTE - 12005

Peak	RT (min)	Compound name	%
61	31,54	BENZYLIC ESTER	0,52
62	31,67	HENEICOSENE ISOMER	0,03
63	31,86	EUGENOL	0,03
64	32,04	T-CADINOL	0,10
65	32,34	MINT SULFIDE	0,02
66	32,38	alpha-MUUROLOL	0,09
67	32,64	DOCOSANE	0,04
68	32,75	METHYL PALMITATE	0,61
69	32,83	delta-CADINOL	0,04
70	33,31	alpha-CADINOL	0,19
71	33,51	METHYL ANTHRANILATE	5,12
72	33,62	DOCOSENE ISOMER	0,20
73	34,09	DOCOSENE ISOMER	0,07
74	34,19	2,7-OCTADIENE-1,6-DIOL, 2,6-DIMETHYL-	0,23
75	34,36	ETHYL PALMITATE	0,11
76	34,38	FARNESYL ACETATE	0,24
77	34,58	INDOLE ISOMER	0,64
78	34,81	9-TRICOSENE	3,58
79	34,86	JASMINE LACTONE	0,07
80	35,24	METHYL TETRAMETHYL-HEXADECANOATE	0,13
81	35,32	CINNAMIC ALCOHOL	0,23
82	36,04	TRICOSANE	0,04
83	36,21	METHYL JASMONATE	0,02
84	36,57	TETRACOSENE ISOMER	0,03
85	36,65	TETRACOSENE ISOMER	0,18
86	36,73	METHYL STEARATE	0,27
87	37,02	BENZOIC ACID	1,03
88	37,17	10-METHYL OLEATE	0,24
89	37,28	9-METHYL OLEATE	0,03
90	37,43	INDOLE	3,85

Disclaimer & Caution:

Please refer to all relevant technical information specific to the product, prior to use. The information contained in this document is obtained from current and reliable sources. New Directions Aromatics Inc. provides the information contained herein, but makes no representation as to its comprehensiveness or accuracy. Individuals receiving this information must exercise their independent judgment in determining its appropriateness for a particular purpose. The user of the product is solely responsible for compliance with all laws and regulations applying to the use of the products, including intellectual property rights of third parties. As the ordinary or otherwise use(s) of this product is outside the control of New Directions Aromatics Inc., no representation or warranty, expressed or implied, is made as to the effect(s) of such use(s), (including damage or injury), or the results obtained. The liability of New Directions Aromatics Inc. is limited to the value of the goods and does not include any consequential loss. New Directions Aromatics Inc. shall not be liable for any errors or delays in the content, or for any actions taken in reliance thereon. New Directions Aromatics Inc. shall not be responsible for any damages resulting from use of or reliance upon this information. In the event of any dispute, the Customer hereby agrees that Jurisdiction is limited to the province of Ontario.

GCMS ANALYSIS (cont'd.)

PRODUCT NAME: JASMINE SAMBAC ABSOLUTE - 12005

Peak	RT (min)	Compound name	%
91	38,11	METHYL LINOLEATE	0,40
92	38,29	PENTACOSENE ISOMER	0,03
93	38,42	N-METHYL-ACETYL-ANTHRANILATE	0,07
94	38,46	AROMATIC KETONE	0,02
95	38,56	ALIPHATIC ESTER	0,03
96	38,80	GERANYLLINALOL	1,69
97	39,18	AROMATIC COMPOUND	0,04
98	39,41	ALIPHATIC ESTER	0,04
99	39,40	1-BUTANONE, 2-METHYL-1-PHENYL-	0,82
100	39,53	METHYL LINOLENATE	3,15
101	40,15	ETHYL LINOLENATE	0,13
102	40,85	METHYL COSENOATE	0,07
103	41,44	BENZYL BENZOATE	0,92
104	42,02	ALIPHATIC METHYL ESTER	0,03
105	43,00	HEXENYLIC ESTER	0,03
106	43,29	AROMATIC COMPOUND	0,03
107	43,53	2-PHENYLETHYL BENZOATE	0,31
108	44,08	SESQUITERPENIC COMPOUND	0,02
109	44,84	SESQUITERPENIC COMPOUND	0,03
110	45,55	BENZYL SALICYLATE	0,16
111	47,12	SESQUITERPENIC COMPOUND	0,04
112	47,30	AROMATIC COMPOUND	0,04
113	47,94	PALMITIC ACID	0,78
114	48,26	COMPOUND Mw=254	0,05
115	49,27	SESQUITERPENIC COMPOUND Mw=250	0,04
116	51,56	NONACOSENE ISOMER	0,05
117	53,30	ALIPHATIC ESTER	0,07
118	54,80	SQUALENE	0,59
119	56,28	AROMATIC COMPOUND	0,07
120	56,46	STEARIC ACID	0,78

Disclaimer & Caution:

Please refer to all relevant technical information specific to the product, prior to use. The information contained in this document is obtained from current and reliable sources. New Directions Aromatics Inc. provides the information contained herein, but makes no representation as to its comprehensiveness or accuracy. Individuals receiving this information must exercise their independent judgment in determining its appropriateness for a particular purpose. The user of the product is solely responsible for compliance with all laws and regulations applying to the use of the products, including intellectual property rights of third parties. As the ordinary or otherwise use(s) of this product is outside the control of New Directions Aromatics Inc., no representation or warranty, expressed or implied, is made as to the effect(s) of such use(s), (including damage or injury), or the results obtained. The liability of New Directions Aromatics Inc. is limited to the value of the goods and does not include any consequential loss. New Directions Aromatics Inc. shall not be liable for any errors or delays in the content, or for any actions taken in reliance thereon. New Directions Aromatics Inc. shall not be responsible for any damages resulting from use of or reliance upon this information. In the event of any dispute, the Customer hereby agrees that Jurisdiction is limited to the province of Ontario.

GCMS ANALYSIS (cont'd.)

PRODUCT NAME: JASMINE SAMBAC ABSOLUTE - 12005

Peak	RT (min)	Compound name	%
121	56,82	ALIPHATIC ESTER	0,06
122	57,63	DIPHENYL BUTANEDIONE ISOMER Mw=238	0,34
123	58,40	OLEIC ACID	0,20
124	59,29	PHENYLMETHYL PALMITATE	0,18
125	60,23	PHENYLETHYL ESTER	0,03
126	61,84	LINOLEIC ACID	0,41
127	62,26	HENTRIACONTENE ISOMER C31	0,07
128	66,76	LINOLENIC ACID	1,36
129	74,46	EPOXY-SQUALENE	0,33
130	76,95	ALIPHATIC ESTER	0,14
131	82,43	AROMATIC COMPOUND Mw=280	0,14
132	83,03	AROMATIC COMPOUND	0,03
133	85,05	EPOXY-SQUALENE ISOMER Mw=426	0,02
134	88,01	AROMATIC COMPOUND	0,02
135	91,19	PHENYLMETHYL LINOLENATE	0,81
136	99,08	2-PHENYLINDOLE, 3-METHYL-	0,02
137	102,33	AROMATIC COMPOUND	0,12
		TOTAL	99,95

Disclaimer & Caution:

Please refer to all relevant technical information specific to the product, prior to use. The information contained in this document is obtained from current and reliable sources. New Directions Aromatics Inc. provides the information contained herein, but makes no representation as to its comprehensiveness or accuracy. Individuals receiving this information must exercise their independent judgment in determining its appropriateness for a particular purpose. The user of the product is solely responsible for compliance with all laws and regulations applying to the use of the products, including intellectual property rights of third parties. As the ordinary or otherwise use(s) of this product is outside the control of New Directions Aromatics Inc., no representation or warranty, expressed or implied, is made as to the effect(s) of such use(s), (including damage or injury), or the results obtained. The liability of New Directions Aromatics Inc. is limited to the value of the goods and does not include any consequential loss. New Directions Aromatics Inc. shall not be liable for any errors or delays in the content, or for any actions taken in reliance thereon. New Directions Aromatics Inc. shall not be responsible for any damages resulting from use of or reliance upon this information. In the event of any dispute, the Customer hereby agrees that Jurisdiction is limited to the province of Ontario.