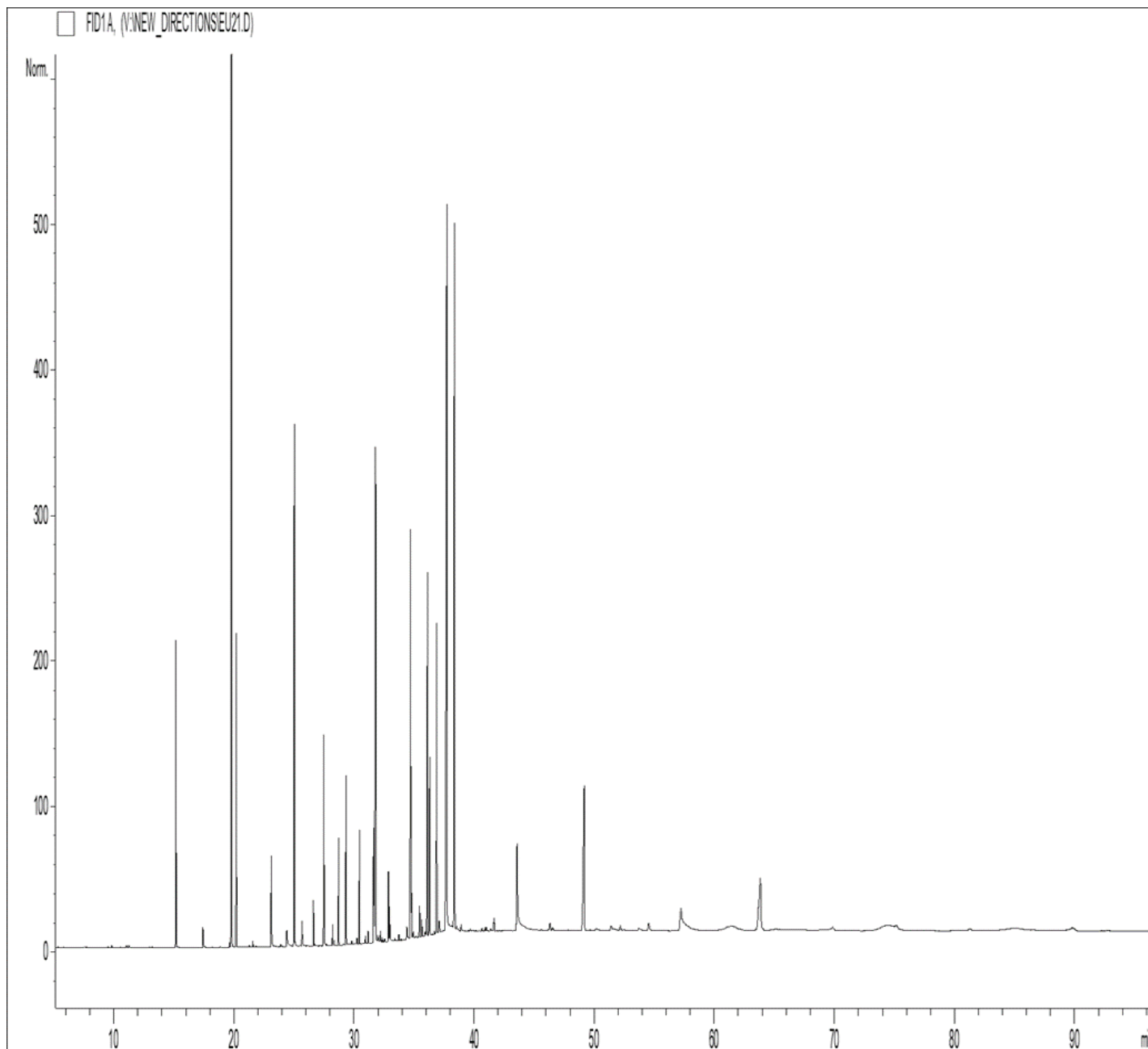


GCMS ANALYSIS

PRODUCT NAME: JASMINE GRANDIFLORUM ABSOLUTE - 12004

DATE: June 18, 2021



Due to volume turnover, this report is not lot specific, It is representative of the quality of this oil produced by the manufacturer of this product, Specific lots may vary slightly as is the case in natural products,

GCMS ANALYSIS (*cont'd.*)

PRODUCT NAME: JASMINE GRANDIFLORUM ABSOLUTE - 12004

Peak	RT (min)	Compound name	%
1	4,64	ETHYL ALCOHOL	0,15
2	9,82	3-HEXEN-1-OL ACETATE	0,02
3	11,05	2-PENTANONE, 4-HYDROXY-4-METHYL-	0,03
4	11,25	3-HEXEN-1-OL	0,03
5	13,16	cis-3-HEXENYL BUTYRATE	0,01
6	15,10	BENZALDEHYDE	0,01
7	15,16	LINALOOL	2,50
8	17,41	METHYL BENZOATE	0,28
9	18,83	ETHYL BENZOATE	0,01
10	19,63	Z,E-alpha-FARNESENE	0,04
11	19,80	BENZYL ACETATE	16,21
12	20,21	E,E-alpha-FARNESENE	3,05
13	21,28	METHYL SALICYLATE	0,04
14	21,58	COMPOUND Mw=218	0,05
15	21,86	PHENYLETHYL ESTER	0,02
16	23,10	BENZYL ALCOHOL	1,10
17	23,89	PHENYLETHYL ALCOHOL	0,02
18	23,98	NONADECANE	0,01
19	24,39	ISOPHYTYL ACETATE	0,30
20	24,44	PHYTYL COMPOUND Mw=138	0,04
21	25,03	cis-JASMONE	5,37
22	25,47	TETRAMETHYL-HEXADECENOL ISOMER Mw=278	0,04
23	25,67	TETRAMETHYL-HEXADECENOL ISOMER Mw=278	0,24
24	26,62	NEROLIDOL	0,40
25	26,70	AROMATIC COMPOUND	0,02
26	27,48	p-CRESOL	2,41
27	27,69	HEXYL BENZOATE	0,03
28	28,21	HENEICOSANE	0,19
29	28,35	BENZYL TIGLATE	0,05
30	28,70	cis-3-HEXENYL BENZOATE	1,02

Disclaimer & Caution

Please refer to all relevant technical information specific to the product, prior to use. The information contained in this document is obtained from current and reliable sources, New Directions Aromatics Inc, provides the information contained herein, but makes no representation as to its comprehensiveness or accuracy. Individuals receiving this information must exercise their independent judgment in determining its appropriateness for a particular purpose. The user of the product is solely responsible for compliance with all laws and regulations applying to the use of the products, including intellectual property rights of third parties. As the ordinary or otherwise use(s) of this product is outside the control of New Directions Aromatics Inc., no representation or warranty, expressed or implied, is made as to the effect(s) of such use(s), (including damage or injury), or the results obtained. The liability of New Directions Aromatics Inc, is limited to the value of the goods and does not include any consequential loss. New Directions Aromatics Inc, shall not be liable for any errors or delays in the content, or for any actions taken in reliance thereon. New Directions Aromatics Inc, shall not be responsible for any damages resulting from use of or reliance upon this information. In the event of any dispute, the Customer hereby agrees that Jurisdiction is limited to the province of Ontario.

GCMS ANALYSIS (cont'd.)

PRODUCT NAME: JASMINE GRANDIFLORUM ABSOLUTE - 12004

Peak	RT (min)	Compound name	%
31	29,33	EUGENOL	1,72
32	29,79	METHYLISOEUGENOL	0,04
33	30,25	BENZOIC ESTER	0,06
34	30,45	METHYL PALMITATE	1,13
35	30,94	DITERPENE Mw=272	0,08
36	31,17	ALIPHATIC ESTER	0,13
37	31,63	JASMINE LACTONE	1,33
38	31,79	ISOPHYTOL	6,85
39	31,97	ETHYL PALMITATE	0,12
40	32,20	CINNAMIC ALCOHOL	0,12
41	32,34	CHAVICOL	0,05
42	32,54	METHYL TETRAMETHYL-HEXADECANOATE	0,04
43	32,86	METHYL JASMONATE	0,73
44	32,97	ISOEUGENOL	0,43
45	33,40	PHTHALIC COMPOUND	0,04
46	33,73	METHYL STEARATE	0,06
47	33,91	9-METHYL OLEATE	0,03
48	34,39	TETRACOSANE	0,22
49	34,69	INDOLE	5,48
50	34,79	10-METHYL OLEATE	0,46
51	34,91	LINOLEIC ACID	0,10
52	35,16	AROMATIC COMPOUND	0,05
53	35,45	ALIPHATIC METHYL ESTER	0,33
54	35,65	METHYL LINOLEATE	0,19
55	35,92	AROMATIC COMPOUND	0,09
56	36,11	PHYTYL ACETATE	4,83
57	36,28	GERANYLLINALOL	1,75
58	36,53	PHYTOL ISOMER	0,03
59	36,88	METHYL LINOLENATE	3,57
60	37,07	SQUALENE ISOMER	0,13

Disclaimer & Caution

Please refer to all relevant technical information specific to the product, prior to use. The information contained in this document is obtained from current and reliable sources. New Directions Aromatics Inc. provides the information contained herein, but makes no representation as to its comprehensiveness or accuracy. Individuals receiving this information must exercise their independent judgment in determining its appropriateness for a particular purpose. The user of the product is solely responsible for compliance with all laws and regulations applying to the use of the products, including intellectual property rights of third parties. As the ordinary or otherwise use(s) of this product is outside the control of New Directions Aromatics Inc., no representation or warranty, expressed or implied, is made as to the effect(s) of such use(s), (including damage or injury), or the results obtained. The liability of New Directions Aromatics Inc. is limited to the value of the goods and does not include any consequential loss. New Directions Aromatics Inc. shall not be liable for any errors or delays in the content, or for any actions taken in reliance thereon. New Directions Aromatics Inc. shall not be responsible for any damages resulting from use of or reliance upon this information. In the event of any dispute, the Customer hereby agrees that Jurisdiction is limited to the province of Ontario.

GCMS ANALYSIS (cont'd.)

PRODUCT NAME: JASMINE GRANDIFLORUM ABSOLUTE - 12004

Peak	RT (min)	Compound name	%
61	37,13	ETHYL LINOLEATE	0,05
62	37,72	PHYTOL	13,95
63	38,36	BENZYL BENZOATE	9,43
64	38,54	AROMATIC COMPOUND	0,03
65	38,92	AROMATIC COMPOUND	0,09
66	39,67	AROMATIC COMPOUND	0,03
67	40,65	AROMATIC COMPOUND Mw=214	0,04
68	40,90	ETHYL LINOLENATE	0,05
69	41,02	AROMATIC COMPOUND	0,07
70	41,39	AROMATIC COMPOUND Mw=214	0,04
71	41,66	BENZYL SALICYLATE	0,22
72	43,58	PALMITIC ACID	2,23
73	46,30	TETRAMETHYL-HEPTADECANOLIDE	0,14
74	46,54	SESQUITERPENIC COMPOUND	0,06
75	49,17	SQUALENE	3,99
76	50,18	STEARIC ACID	0,09
77	51,41	COMPOUND Mw=282	0,15
78	51,65	CONIFERALDEHYDE	0,10
79	52,18	PHENYLMETHYL PALMITATE	0,13
80	53,72	LINOLEIC ACID	0,09
81	54,53	ALIPHATIC ALCOHOL	0,22
82	57,22	LINOLENIC ACID	1,59
83	63,83	EPOXY-SQUALENE	2,64
84	69,87	COMPOUND Mw=280	0,13
85	75,13	AROMATIC COMPOUND	0,16
86	81,26	AROMATIC COMPOUND	0,13
87	89,83	EPOXY-SQUALENE ISOMER Mw=426	0,25
		TOTAL	99,98

Disclaimer & Caution

Please refer to all relevant technical information specific to the product, prior to use. The information contained in this document is obtained from current and reliable sources, New Directions Aromatics Inc, provides the information contained herein, but makes no representation as to its comprehensiveness or accuracy. Individuals receiving this information must exercise their independent judgment in determining its appropriateness for a particular purpose. The user of the product is solely responsible for compliance with all laws and regulations applying to the use of the products, including intellectual property rights of third parties. As the ordinary or otherwise use(s) of this product is outside the control of New Directions Aromatics Inc., no representation or warranty, expressed or implied, is made as to the effect(s) of such use(s), (including damage or injury), or the results obtained. The liability of New Directions Aromatics Inc, is limited to the value of the goods and does not include any consequential loss. New Directions Aromatics Inc, shall not be liable for any errors or delays in the content, or for any actions taken in reliance thereon. New Directions Aromatics Inc, shall not be responsible for any damages resulting from use of or reliance upon this information. In the event of any dispute, the Customer hereby agrees that Jurisdiction is limited to the province of Ontario.