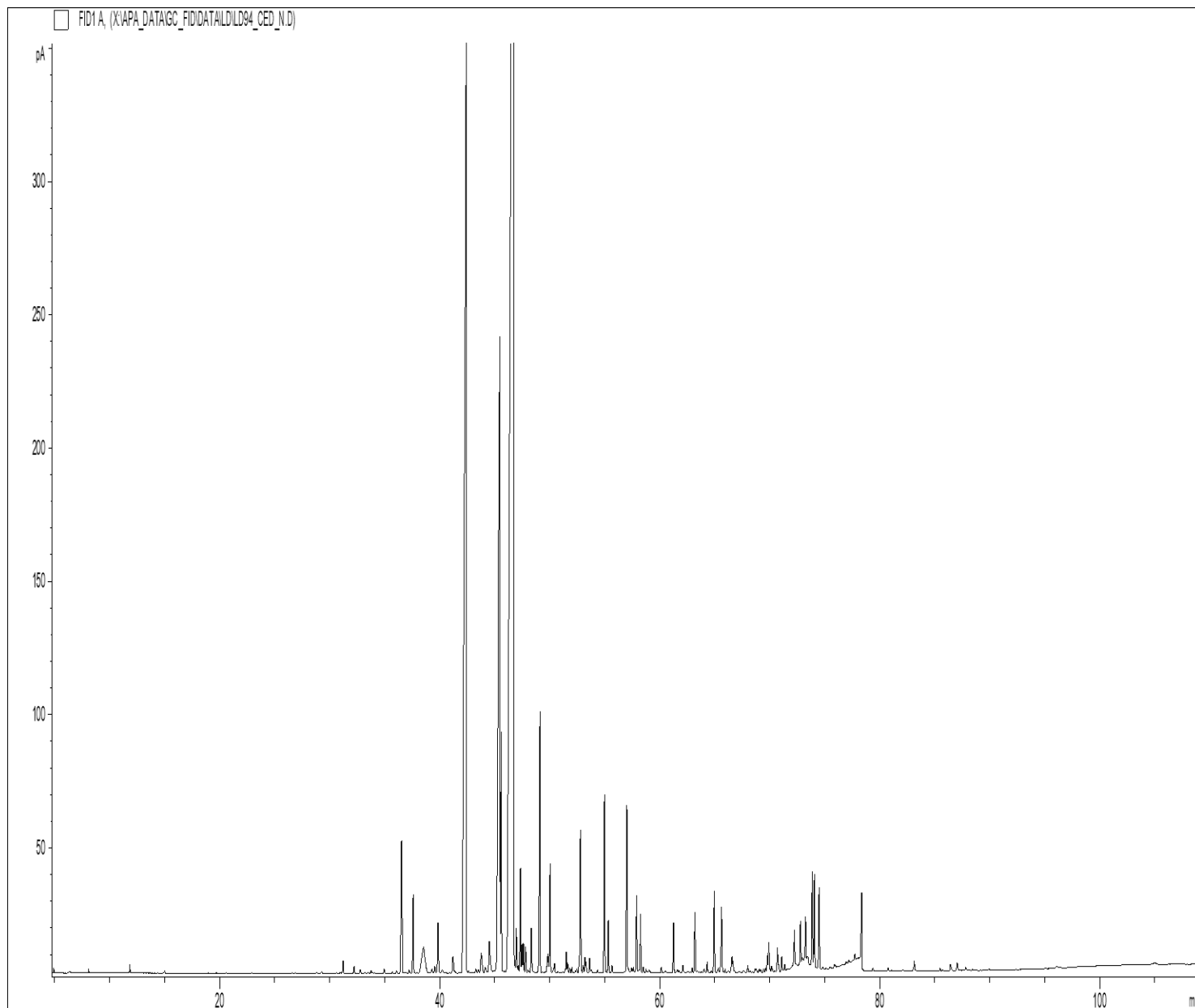


## GCMS ANALYSIS

PRODUCT NAME: CEDARWOOD ESSENTIAL OIL (ATLAS) - 11194

DATE: February 29, 2024



*Due to volume turnover, this report is not lot specific, It is representative of the quality of this oil produced by the manufacturer of this product, Specific lots may vary slightly as is the case in natural products,*

**GCMS ANALYSIS (cont'd,)**

**PRODUCT NAME: CEDARWOOD ESSENTIAL OIL (ATLAS) - 11194**

Peak	RT (min)	Compound name	%
1	8,10	alpha-PINENE	0,01
2	11,84	3-PENTEN-2-ONE, 4-METHYL-	0,04
3	15,02	LIMONENE	0,01
4	29,28	alpha,p-DIMETHYLSTYRENE	0,01
5	31,22	alpha-LONGIPINENE	0,09
6	32,23	YLANGENE	0,05
7	32,80	alpha-COPAENE	0,03
8	33,75	SESQUITERPENE	0,02
9	34,94	SATIVENE	0,03
10	36,07	SESQUITERPENE	0,02
11	36,53	4-ACETYLCYCLOHEX-1-ENE, 1-METHYL-	0,72
12	36,60	CADINADIENE ISOMER	0,72
13	37,22	SESQUITERPENE	0,03
14	37,59	LONGIFOLENE	0,58
15	38,53	EUDESMATRIENE ISOMER	0,85
16	39,30	SESQUITERPENE	0,05
17	39,55	SESQUITERPENE	0,05
18	39,85	CEDRENE ISOMER	0,47
19	40,20	HIMACHALENE ISOMER	0,05
20	41,20	HIMACHALENE ISOMER	0,19
21	41,39	SESQUITERPENE	0,02
22	42,40	<b>alpha-HIMACHALENE</b>	<b>16,45</b>
23	42,63	SESQUITERPENE	0,02
24	42,83	SESQUITERPENE	0,02
25	43,28	SESQUITERPENE Mw=202	0,04
26	43,51	SESQUITERPENE	0,04
27	43,78	E-beta-FARNESENE	0,27
28	44,14	SESQUITERPENE	0,09
29	44,51	HIMACHALENE ISOMER	0,45
30	45,46	<b>gamma-HIMACHALENE</b>	<b>9,86</b>

**Disclaimer & Caution:**

Please refer to all relevant technical information specific to the product, prior to use, The information contained in this document is obtained from current and reliable sources, New Directions Aromatics Inc, provides the information contained herein, but makes no representation as to its comprehensiveness or accuracy, Individuals receiving this information must exercise their independent judgment in determining its appropriateness for a particular purpose, The user of the product is solely responsible for compliance with all laws and regulations applying to the use of the products, including intellectual property rights of third parties, As the ordinary or otherwise use(s) of this product is outside the control of New Directions Aromatics Inc., no representation or warranty, expressed or implied, is made as to the effect(s) of such use(s), (including damage or injury), or the results obtained, The liability of New Directions Aromatics Inc, is limited to the value of the goods and does not include any consequential loss, New Directions Aromatics Inc, shall not be liable for any errors or delays in the content, or for any actions taken in reliance thereon, New Directions Aromatics Inc, shall not be responsible for any damages resulting from use of or reliance upon this information, In the event of any dispute, the Customer hereby agrees that Jurisdiction is limited to the province of Ontario, Canada

**GCMS ANALYSIS (cont'd,)**

**PRODUCT NAME: CEDARWOOD ESSENTIAL OIL (ATLAS) - 11194**

Peak	RT (min)	Compound name	%
31	45,59	11-alpha-HIMACHALA-1,4-DIENE	1,65
32	46,71	<b>beta-HIMACHALENE</b>	<b>42,24</b>
33	46,96	SESQUITERPENE Mw=202	0,34
34	47,14	CURCUMENE ISOMER	0,06
35	47,33	ISOTHUYOPSENE	0,76
36	47,48	CURCUMENE ISOMER	0,22
37	47,61	EUDESMA-2,4,11-TRIENE ISOMER	0,21
38	47,81	SESQUITERPENE Mw=202	0,20
39	47,99	SESQUITERPENE	0,02
40	48,09	SESQUITERPENE	0,01
41	48,32	SESQUITERPENE Mw=202	0,37
42	48,54	SESQUITERPENE	0,02
43	49,11	delta-CADINENE	2,23
44	49,36	SESQUITERPENE Mw=202	0,02
45	49,61	SESQUITERPENE Mw=202	0,02
46	49,82	p-METHYLACETOPHENONE	0,21
47		alpha-CURCUMENE	
48	50,03	trans-alpha-BISABOLENE	0,81
49	50,45	CADINA-1,4-DIENE	0,12
50	50,75	SESQUITERPENE Mw=202	0,02
51	51,20	SESQUITERPENE Mw=202	0,02
52	51,38	SESQUITERPENE Mw=202	0,01
53	51,50	SESQUITERPENE Mw=202	0,16
54	51,63	SESQUITERPENE	0,07
55	51,83	KETONIC COMPOUND	0,04
56	52,03	SESQUITERPENIC COMPOUND	0,04
57	52,33	AROMATIC COMPOUND	0,02
58	52,46	SESQUITERPENE Mw=202	0,03
59	52,79	EUDESMA-2,4,11-TRIENE ISOMER	1,26
60	53,03	CUPARENE	0,06

**Disclaimer & Caution:**

Please refer to all relevant technical information specific to the product, prior to use, The information contained in this document is obtained from current and reliable sources, New Directions Aromatics Inc, provides the information contained herein, but makes no representation as to its comprehensiveness or accuracy, Individuals receiving this information must exercise their independent judgment in determining its appropriateness for a particular purpose, The user of the product is solely responsible for compliance with all laws and regulations applying to the use of the products, including intellectual property rights of third parties, As the ordinary or otherwise use(s) of this product is outside the control of New Directions Aromatics Inc., no representation or warranty, expressed or implied, is made as to the effect(s) of such use(s), (including damage or injury), or the results obtained, The liability of New Directions Aromatics Inc, is limited to the value of the goods and does not include any consequential loss, New Directions Aromatics Inc, shall not be liable for any errors or delays in the content, or for any actions taken in reliance thereon, New Directions Aromatics Inc, shall not be responsible for any damages resulting from use of or reliance upon this information, In the event of any dispute, the Customer hereby agrees that Jurisdiction is limited to the province of Ontario, Canada

**GCMS ANALYSIS (cont'd,)**

**PRODUCT NAME: CEDARWOOD ESSENTIAL OIL (ATLAS) - 11194**

Peak	RT (min)	Compound name	%
61	53,20	cis-CALAMENENE	0,11
62	53,30	trans-CALAMENENE	0,08
63	53,63	SESQUITERPENE Mw=202	0,12
64	53,75	SESQUITERPENE Mw=202	0,03
65	54,34	COMPOUND Mw=200	0,02
66	54,98	alpha-DEHYDRO-ar-HIMACHALENE	1,35
67	55,13	AROMATIC COMPOUND	0,01
68	55,33	CADINA-1,6,8-TRIENE	0,38
69	55,67	AROMATIC COMPOUND	0,07
70	57,01	gamma-DEHYDRO-ar-HIMACHALENE	1,34
71	57,15	SESQUITERPENIC COMPOUND	0,04
72	57,45	COMPOUND Mw=218	0,05
73	57,60	SESQUITERPENIC COMPOUND	0,05
74	57,89	alpha-CALACORENE	0,58
75	58,26	VESTITENONE	0,45
76	58,51	AROMATIC COMPOUND	0,06
77	58,76	AROMATIC COMPOUND	0,03
78	58,92	COMPOUND Mw=220	0,01
79	59,04	AROMATIC COMPOUND	0,03
80	60,16	beta-CALACORENE	0,05
81	60,49	AROMATIC COMPOUND	0,02
82	61,25	COMPOUND Mw=218	0,39
83	61,63	COMPOUND Mw=220	0,03
84	61,75	COMPOUND Mw=222	0,02
85	62,10	COMPOUND Mw=220	0,07
86	62,48	AROMATIC COMPOUND	0,01
87	62,63	AROMATIC COMPOUND	0,01
88	62,95	SESQUITERPENIC COMPOUND	0,04
89	63,20	beta-HIMACHALENE OXIDE	0,47
90	63,40	AROMATIC COMPOUND	0,02

**Disclaimer & Caution:**

Please refer to all relevant technical information specific to the product, prior to use, The information contained in this document is obtained from current and reliable sources, New Directions Aromatics Inc, provides the information contained herein, but makes no representation as to its comprehensiveness or accuracy, Individuals receiving this information must exercise their independent judgment in determining its appropriateness for a particular purpose, The user of the product is solely responsible for compliance with all laws and regulations applying to the use of the products, including intellectual property rights of third parties, As the ordinary or otherwise use(s) of this product is outside the control of New Directions Aromatics Inc., no representation or warranty, expressed or implied, is made as to the effect(s) of such use(s), (including damage or injury), or the results obtained, The liability of New Directions Aromatics Inc, is limited to the value of the goods and does not include any consequential loss, New Directions Aromatics Inc, shall not be liable for any errors or delays in the content, or for any actions taken in reliance thereon, New Directions Aromatics Inc, shall not be responsible for any damages resulting from use of or reliance upon this information, In the event of any dispute, the Customer hereby agrees that Jurisdiction is limited to the province of Ontario, Canada

**GCMS ANALYSIS (cont'd.)**

**PRODUCT NAME: CEDARWOOD ESSENTIAL OIL (ATLAS) – 11194**

Peak	RT (min)	Compound name	%
91	63,82	COMPOUND Mw=220	0,01
92	64,04	COMPOUND Mw=232	0,04
93	64,32	AROMATIC COMPOUND	0,08
94	64,69	NEROLIDOL	0,02
95	64,95	METHOXYBENZYL ALCOHOL	0,64
96	65,31	AROMATIC COMPOUND Mw=200	0,05
97	65,62	CUBENOL	0,57
98	65,96	AROMATIC COMPOUND	0,02
99	66,25	COMPOUND Mw=234	0,02
100	66,57	COMPOUND Mw=220	0,16
101	66,66	COMPOUND Mw=220	0,08
102	66,79	AROMATIC COMPOUND	0,01
103	67,20	COMPOUND Mw=220	0,02
104	67,59	COMPOUND Mw=216	0,02
105	68,01	AROMATIC COMPOUND	0,05
106	68,24	AROMATIC COMPOUND	0,02
107	68,66	AROMATIC COMPOUND Mw=250	0,02
108	68,76	AROMATIC COMPOUND	0,04
109	69,05	AROMATIC COMPOUND	0,03
110	69,17	AROMATIC COMPOUND	0,02
111	69,43	COMPOUND Mw=236	0,03
112	69,62	SESQUITERPENIC COMPOUND	0,03
113	69,79	AROMATIC COMPOUND Mw=220	0,14
114	69,92	LONGIBORNEOL	0,26
115	70,17	SESQUITERPENIC COMPOUND	0,08
116	70,45	SESQUITERPENIC COMPOUND	0,02
117	70,70	COMPOUND Mw=220	0,19
118	70,80	SESQUITERPENIC COMPOUND	0,04
119	71,10	SESQUITERPENIC COMPOUND	0,11
120	71,36	COMPOUND Mw=220	0,05

**Disclaimer & Caution:**

Please refer to all relevant technical information specific to the product, prior to use, The information contained in this document is obtained from current and reliable sources, New Directions Aromatics Inc, provides the information contained herein, but makes no representation as to its comprehensiveness or accuracy, Individuals receiving this information must exercise their independent judgment in determining its appropriateness for a particular purpose, The user of the product is solely responsible for compliance with all laws and regulations applying to the use of the products, including intellectual property rights of third parties, As the ordinary or otherwise use(s) of this product is outside the control of New Directions Aromatics Inc., no representation or warranty, expressed or implied, is made as to the effect(s) of such use(s), (including damage or injury), or the results obtained, The liability of New Directions Aromatics Inc, is limited to the value of the goods and does not include any consequential loss, New Directions Aromatics Inc, shall not be liable for any errors or delays in the content, or for any actions taken in reliance thereon, New Directions Aromatics Inc, shall not be responsible for any damages resulting from use of or reliance upon this information, In the event of any dispute, the Customer hereby agrees that Jurisdiction is limited to the province of Ontario, Canada

**GCMS ANALYSIS (cont'd.)**

**PRODUCT NAME: CEDARWOOD ESSENTIAL OIL (ATLAS) – 11194**

Peak	RT (min)	Compound name	%
121	72,24	Z-gamma-ATLANTONE	0,27
122	72,79	HIMACHALOL	0,31
123	72,97	AROMATIC COMPOUND	0,03
124	73,26	E-gamma-ATLANTONE	0,37
125	73,40	CADALENE	0,03
126	73,47	AROMATIC COMPOUND	0,04
127	73,86	DEODARONE ISOMER	0,74
128	74,06	DEODARONE ISOMER	0,72
129	74,49	ALLO-HIMACHALOL	0,65
130	75,00	Z-alpha-ATLANTONE	2,07
131	75,51	AROMATIC COMPOUND	0,01
132	75,89	COMPOUND Mw=238	0,04
133	76,95	COMPOUND Mw=218	0,01
134	77,19	COMPOUND Mw=218	0,02
135	77,73	COMPOUND Mw=220	0,04
136	78,36	<b>E-alpha-ATLANTONE</b>	<b>2,96</b>
137	79,38	COMPOUND Mw=218	0,02
138	80,77	COMPOUND Mw=220	0,03
139	82,11	AROMATIC COMPOUND	0,02
140	83,14	AROMATIC COMPOUND Mw=218	0,09
141	84,46	AROMATIC COMPOUND	0,01
142	85,49	AROMATIC COMPOUND	0,02
143	85,72	AROMATIC COMPOUND	0,01
144	86,43	COMPOUND Mw=216	0,08
145	87,05	COMPOUND Mw=220	0,08
146	87,82	COMPOUND Mw=220	0,03
147	88,45	COMPOUND Mw=220	0,01
148	89,93	TERPENIC COMPOUND	0,01
		<b>TOTAL</b>	<b>100,00</b>

**Disclaimer & Caution:**

Please refer to all relevant technical information specific to the product, prior to use, The information contained in this document is obtained from current and reliable sources, New Directions Aromatics Inc, provides the information contained herein, but makes no representation as to its comprehensiveness or accuracy, Individuals receiving this information must exercise their independent judgment in determining its appropriateness for a particular purpose, The user of the product is solely responsible for compliance with all laws and regulations applying to the use of the products, including intellectual property rights of third parties, As the ordinary or otherwise use(s) of this product is outside the control of New Directions Aromatics Inc., no representation or warranty, expressed or implied, is made as to the effect(s) of such use(s), (including damage or injury), or the results obtained, The liability of New Directions Aromatics Inc, is limited to the value of the goods and does not include any consequential loss, New Directions Aromatics Inc, shall not be liable for any errors or delays in the content, or for any actions taken in reliance thereon, New Directions Aromatics Inc, shall not be responsible for any damages resulting from use of or reliance upon this information, In the event of any dispute, the Customer hereby agrees that Jurisdiction is limited to the province of Ontario, Canada